

KING SALMON, ALASKA

AL-1237 (FAA)

24305

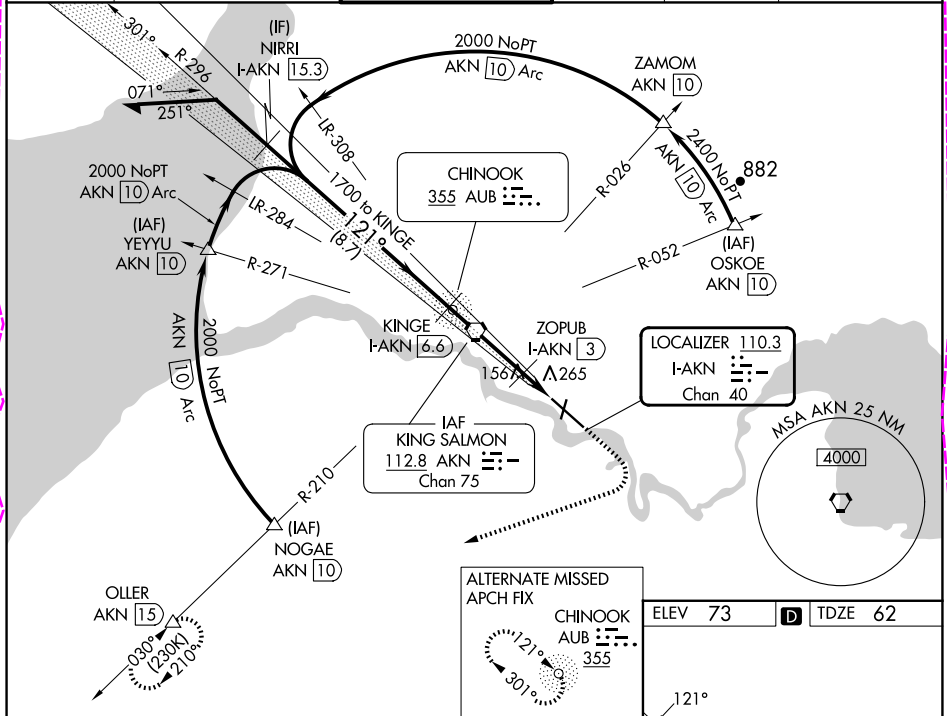
LOC/DME I-AKN	APP CRS	Rwy Idg	8501
110.3	121°	TDZE	62
Chan 40		Apt Elev	73

# ILS Y or LOC Y RWY 12

KING SALMON (AKN)(PAKN)

DME required.	MALSR	MISSED APPROACH: Climb to 600 then climbing right turn to 3000 on heading 240° and AKN VORTAC R-210 to OLLER/15 DME and hold.
Autopilot coupled approach NA below 700. For inop ALS, increase S-ILS 12 Cat E visibility to RVR 4000. For inop ALS, increase S-LOC 12 Cat C-E visibility to RVR 5500. When control tower closed: increase S-ILS 12 and S-LOC 12 visibilities to RVR 5000 all Cats. When control tower closed, inop table does not apply.		

ATIS 128.8	ANCHORAGE CENTER 124.8 354.0	KING SALMON TOWER* 118.3 279.5	GND CON 121.9	UNICOM 122.95	CTAF 121.9 352.05
---------------	---------------------------------	-----------------------------------	------------------	------------------	----------------------



Use I-AKN DME when on the localizer course.

Remain within 15 NM

AKN 296°

2000

I-AKN 121°

GS 3.00°

TCH 66

AKN VORTAC

KINGE I-AKN 6.6

1700

ZOPUB I-AKN 3

I-AKN 1.6

\*560

3.6 NM

1.4 NM

600

3000

hdg 240°

AKN R-210

OLLER

\*LOC only

CATEGORY	A	B	C	D	E
S-ILS 12	262/24 200 (200-½)				
S-LOC 12	420/24	358 (400-½)	420/30	358 (400-¾)	

KING SALMON, ALASKA

58°41'N-156°39'W

KING SALMON (AKN)(PAKN)

Amdt 19 25FEB21

# ILS Y or LOC Y RWY 12

AK, 12 JUN 2025 to 07 AUG 2025

AK, 12 JUN 2025 to 07 AUG 2025

