

VOR/DME ENA 117.6 Chan 123	APP CRS 012°	Rwy Idg 7575 TDZE 94 Apt Elev 100
--	------------------------	--

VOR RWY 2L
KENAI MUNI (ENA) (PAEN)

T Circling Rwy 2R, 20L NA at night. DME required. When local altimeter setting not received, use Soldotna altimeter setting and increase all MDA 40 feet; increase S-2L Cat C and D visibility $\frac{1}{8}$ mile and Circling Cat D visibility $\frac{1}{4}$ mile. VDP NA with Soldotna altimeter setting. Circling Rwy 2W, 20W NA.

MISSED APPROACH: Climb to 2000 direct ENA VOR/DME and on ENA VOR/DME R-028 to SWANS/FNA 10 DME and hold

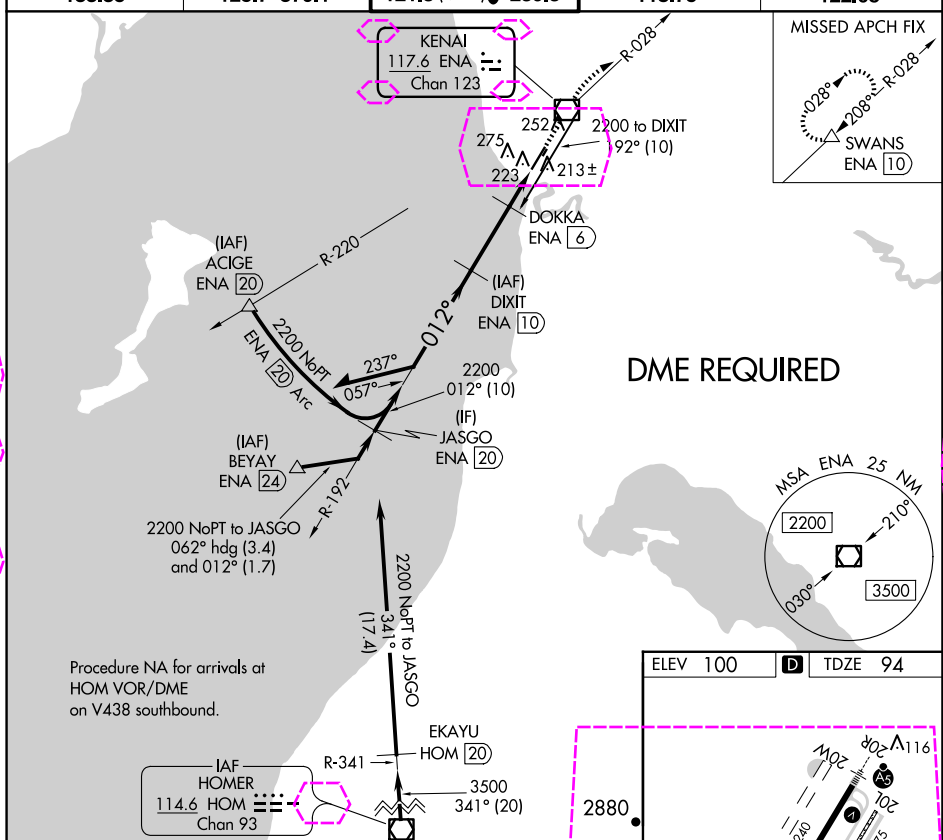
ATIS
133.35

ANCHORAGE CENTER
125.7 379.1

KENAI TOWER★
121.3 (CTAF) **L** 239.3

GND CON
118.75

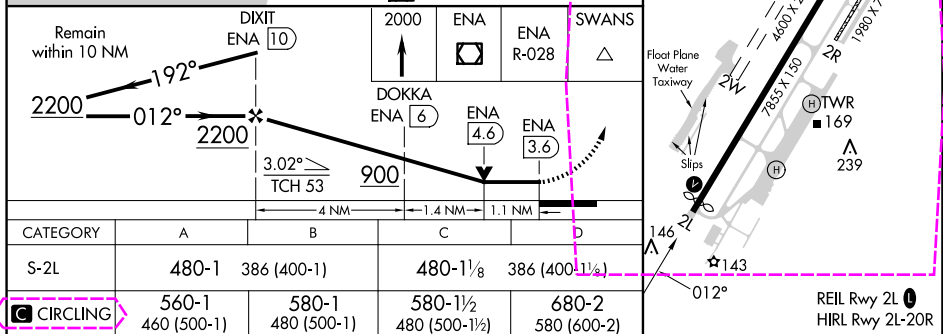
KENAI RAD
122.65



DME REQUIRED

Procedure NA for arrivals at
HOM VOR/DME
on V438 southbound

ELEV 100	D	TDZE 94
----------	----------	---------



KENAI, ALASKA

Amdt 10A 13SEP18

60°34'N-151°15'W

KENAI MUNI (ENA) (PAEN)
VOR RWY 2L

KENAI, ALASKA

AL-1235 (FAA)

25219

VOR/DME ENA 117.6 Chan 123	APP CRS 012°	Rwy Ldg 7575 TDZE 94 Apt Elev 100
--	------------------------	--

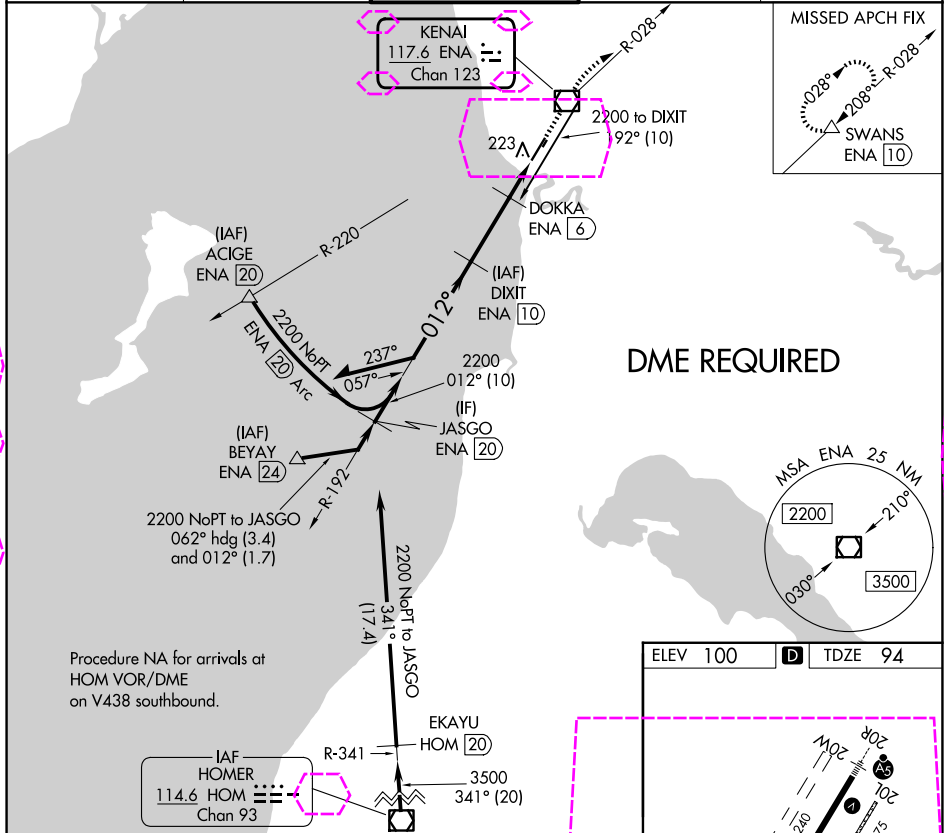
VOR RWY 2L

KENAI MUNI (ENA) (PAEN)

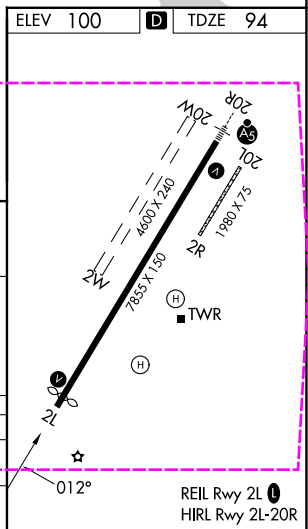
⚠ Circling Rwy 2R, 20L NA at night. DME required. When local altimeter setting not received, use Soldotna altimeter setting and increase all MDA 40 feet; increase S-2L Cat C and D visibility $\frac{1}{8}$ mile and Circling Cat D visibility $\frac{1}{4}$ mile. VDP NA with Soldotna altimeter setting. Circling Rwy 2W, 20W NA.

MISSED APPROACH: Climb to 2000 direct ENA VOR/DME and on ENA VOR/DME R-028 to SWANS/ENA 10 DME and hold.

ATIS 133.35	ANCHORAGE CENTER 125.7 379.1	KENAI TOWER★ 121.3 (CTAF) 239.3	GND CON 118.75	KENAI RADIO 122.65
-----------------------	--	---	--------------------------	------------------------------



Remain within 10 NM		DIXIT ENA 10	2000	ENA	SWANS
192°		012°	2200	ENA R-028	△
3.02° TCH 53		900	DOKKA ENA 6	ENA 4.6	ENA 3.6
4 NM		1.4 NM	1.1 NM		
CATEGORY	A	B	C	D	
S-2L	480-1	386 (400-1)	480-1 $\frac{1}{8}$	386 (400-1 $\frac{1}{8}$)	
CIRCLING	560-1 460 (500-1)	580-1 480 (500-1)	580-1 $\frac{1}{2}$ 480 (500-1 $\frac{1}{2}$)	680-2 580 (600-2)	



KENAI, ALASKA
Amdt 10A 13SEP18

60°34'N-151°15'W

KENAI MUNI (ENA) (PAEN)
VOR RWY 2L

AK, 07 AUG 2025 to 02 OCT 2025

AK, 07 AUG 2025 to 02 OCT 2025