

VOR/DME ENA <u>117.6</u> Chan <b>123</b>	APP CRS <b>192°</b>	Rwy Idg <b>7575</b> TDZE <b>98</b> Apt Elev <b>100</b>
--	------------------------	--

VOR RWY 20R  
KENAI MUNI (ENA) (PAEN)

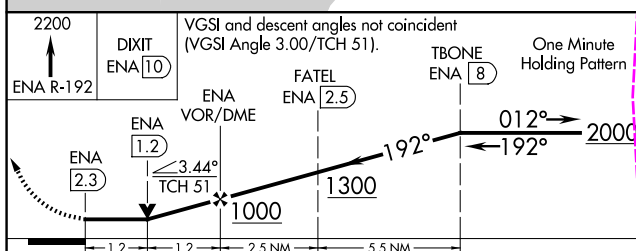
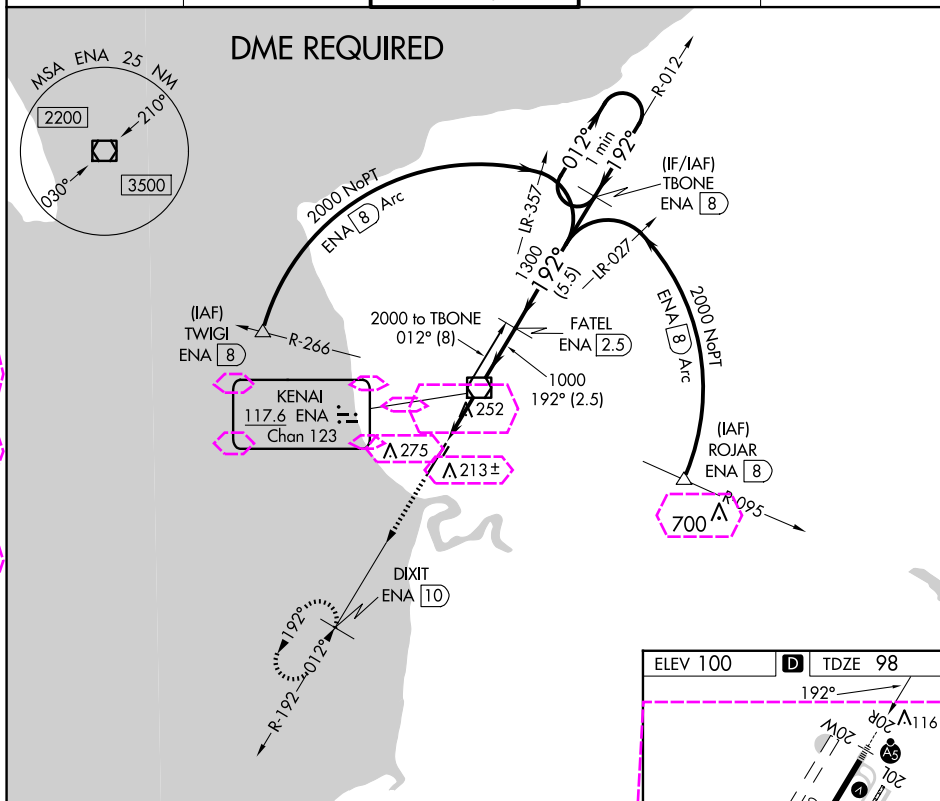
**T** Circling Rwy 2R, 20L NA at night. DME required. VDP NA when using Soldotna altimeter setting. When local altimeter setting not received, use Soldotna altimeter setting and increase all MDA 40 feet, increase S-20R Cats C and D visibility to RVR 5000. Circling Rwy 2W, 20W NA.


MAISE

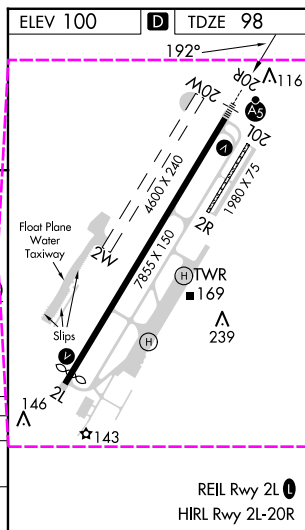


**MISSED APPROACH:**  
Climb to 2200 on ENA  
VOR/DME R-192 to DIXIT/ENA  
VOR/DME 10 DME and hold.

ATIS 133.35	ANCHORAGE CENTER 125.7 379.1	KENAI TOWER★ 121.3 (CTAF) 0 239.3	GND CON 118.75	KENAI RADIO 122.65
----------------	---------------------------------	--------------------------------------	-------------------	-----------------------



CATEGORY	A	B	C	D
S-20R	520/24 422 (500-½)		520/40 422 (500-¾)	
 CIRCLING	560-1 460 (500-1)	580-1 480 (500-1)	580-1½ 480 (500-1½)	680-2 580 (600-2)



KFNAL ALASKA

Amdt 21A 13SEP18

60°34'N-151°15'W

KENAI MUNI (ENA) (PAEN)  
VOR RWY 20R

VOR RWY 20R

AK, 12 JUN 2025 to 07 AUG 2025

AK, 12 JUN 2025 to 07 AUG 2025

KENAI, ALASKA

AL-1235 (FAA)

25219

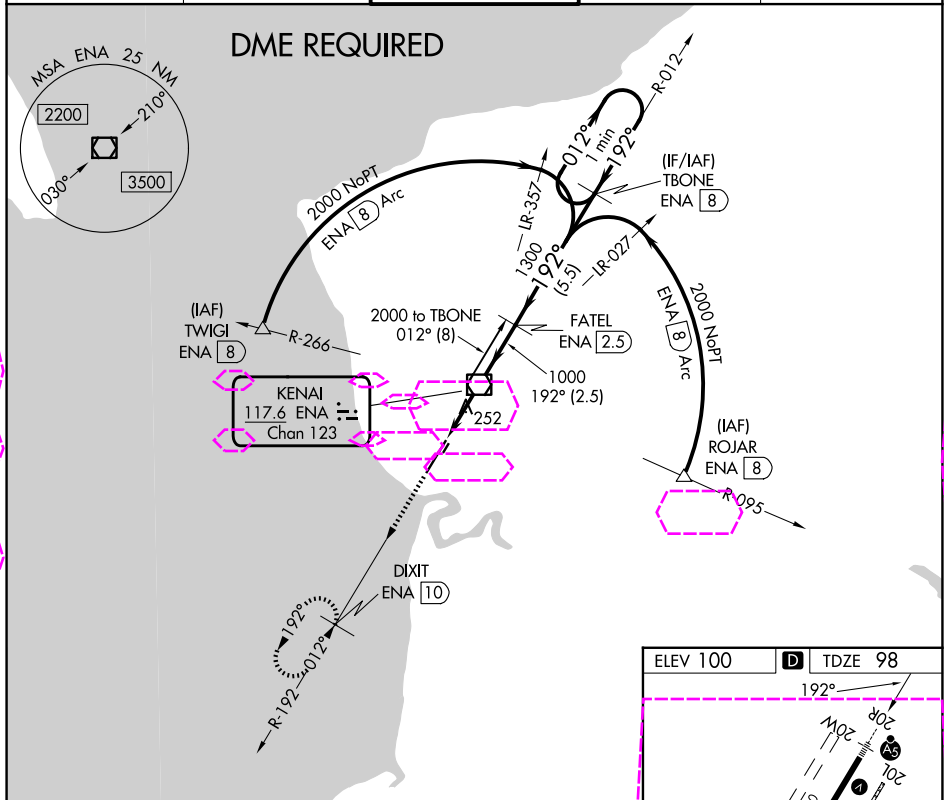
VOR/DME ENA <b>117.6</b> Chan <b>123</b>	APP CRS <b>192°</b>	Rwy Ldg <b>7575</b> TDZE <b>98</b> Apt Elev <b>100</b>
--	------------------------	--

# VOR RWY 20R

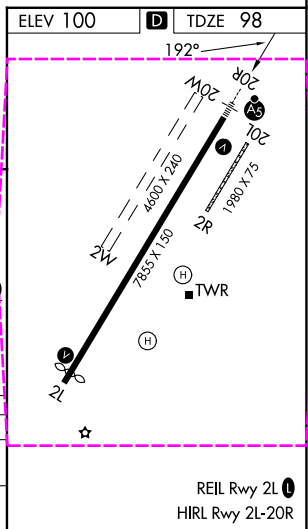
## KENAI MUNI (ENA) (PAEN)

<b>⚠</b> Circling Rwy 2R, 20L NA at night. DME required. VDP NA when using Soldotna altimeter setting. When local altimeter setting not received, use Soldotna altimeter setting and increase all MDA 40 feet, increase S-20R Cats C and D visibility to RVR 5000. Circling Rwy 2W, 20W NA.	MALSR 	MISSED APPROACH: Climb to 2200 on ENA VOR/DME R-192 to DIXIT/ENA VOR/DME 10 DME and hold.
---	-----------	--

ATIS <b>133.35</b>	ANCHORAGE CENTER <b>125.7 379.1</b>	KENAI TOWER* <b>121.3 (CTAF) 239.3</b>	GND CON <b>118.75</b>	KENAI RADIO <b>122.65</b>
-----------------------	--	---	--------------------------	------------------------------



2200 ↑ ENA R-192	DIXIT ENA [10]	VGSI and descent angles not coincident (VGSI Angle 3.00/TCH 51).		TBONE ENA [8]	One Minute Holding Pattern
ENA [2.3]	ENA [1.2]	ENA VOR/DME 3.44° TCH 51	FATEL ENA [2.5]	1000	1300
1.2	1.2	2.5 NM	5.5 NM		
CATEGORY	A	B	C	D	
S-20R	520/24	422 (500-½)	520/40	422 (500-¾)	
CIRCLING	560-1 460 (500-1)	580-1 480 (500-1)	580-1½ 480 (500-½)	680-2 580 (600-2)	



KENAI, ALASKA

Amdt 21A 13SEP18

60°34'N-151°15'W

KENAI MUNI (ENA) (PAEN)

# VOR RWY 20R

AK, 07 AUG 2025 to 02 OCT 2025

AK, 07 AUG 2025 to 02 OCT 2025