

KENAI, ALASKA

AL-1235 (FAA)

22307

WAAS CH <b>69404</b> <b>W02A</b>	APP CRS <b>016°</b>	Rwy Idg <b>7575</b> TDZE <b>94</b> Apt Elev <b>100</b>
--	------------------------	--

# RNAV (GPS) RWY 2L

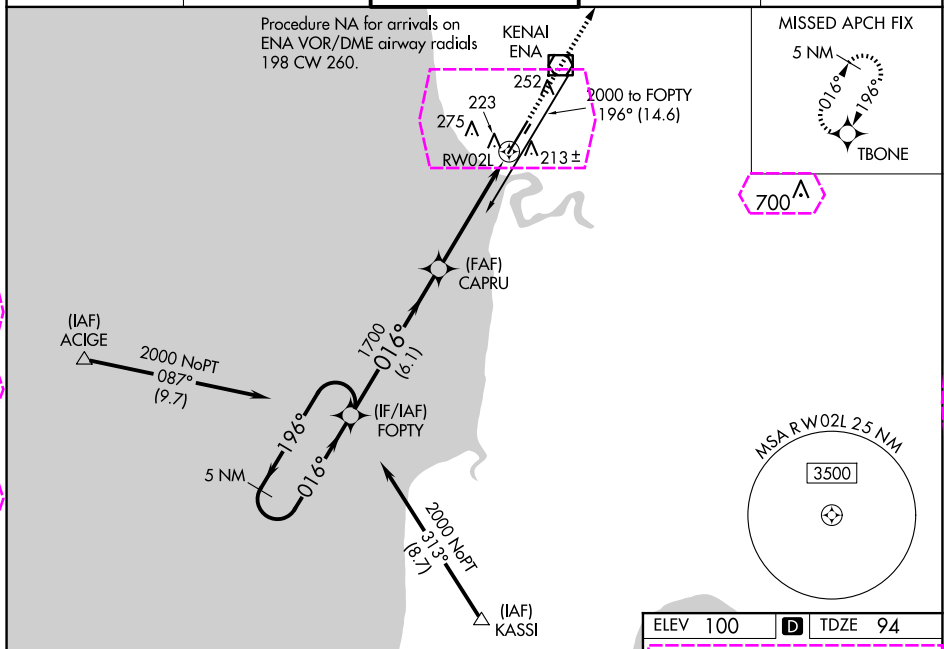
KENAI MUNI (ENA) (PAEN)

RNP APCH.

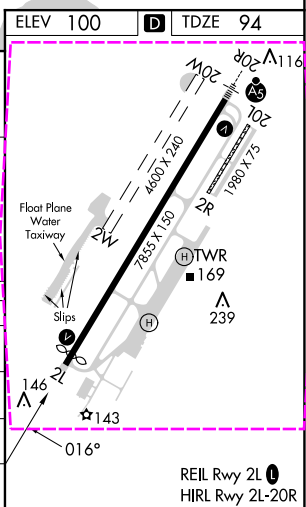
**⚠** Baro-VNAV NA when using Soldotna altimeter setting. For uncompensated Baro-VNAV systems, LNAV/VNAV NA below -18°C (0°F) or above 54°C (130°F). When local altimeter setting not received, use Soldotna altimeter setting: increase LPV DA to 366 feet and LNAV/VNAV DA to 429 feet and all MDA 40 feet; increase LPV and LNAV/VNAV visibility all Cats and LNAV Cat C/D visibility  $\frac{1}{8}$  mile; increase Circling Cat D visibility  $\frac{1}{4}$  mile. VDP NA when using Soldotna altimeter setting. Circling Rwy 2R, 20L NA at night. Circling Rwy 2W, 20W NA.

MISSED APPROACH:  
Climb to 2000 direct  
TBONE and hold.

ATIS <b>133.35</b>	ANCHORAGE CENTER <b>125.7 379.1</b>	KENAI TOWER* <b>121.3 (CTAF) 239.3</b>	GND CON <b>118.75</b>	KENAI RADIO <b>122.65</b>
-----------------------	--	---	--------------------------	------------------------------



5 NM Holding Pattern				
FOPTY				
2000				
196°				
016°				
GP 3.00°				
TCH 53				
6.1 NM				
3.8 NM				
1.1 NM				
* 1.1 NM to RW02L				
RW02L				
* INAV only				
2000 TBONE				
CATEGORY				
A				
B				
C				
D				
LPV DA				
344-3/4 250 (300-3/4)				
LNAV/VNAV DA				
407-1 313 (400-1)				
LNAV MDA				
480-1 386 (400-1)				
480-1 1/8 386 (400-1 1/8)				
CIRCLING				
560-1 460 (500-1)				
580-1 480 (500-1)				
580-1 1/2 480 (500-1 1/2)				
740-2 640 (700-2)				



KENAI, ALASKA  
Amdt 3A 13SEP18

60°34'N-151°15'W

KENAI MUNI (ENA) (PAEN)  
RNAV (GPS) RWY 2L

KENAI MUNI (ENA) (PAEN)  
RNAV (GPS) RWY 2L

AK, 07 AUG 2025 to 02 OCT 2025