

23278

WAAS CH 99504 W20A	APP CRS 196°	Rwy Idg 7575 TDZE 98 Apt Elev 100
--	------------------------	--

RNAV (GPS) RWY 20R
KENAI MUNI (ENA) (PAEN)

KENAI MUNI (ENA) (PAEN)

RNP APCH.

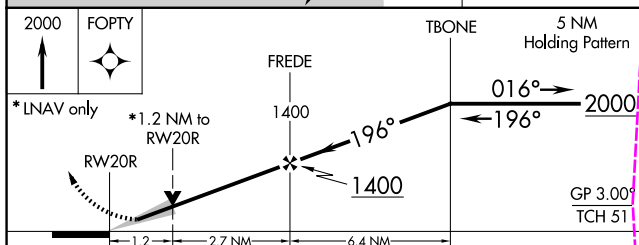
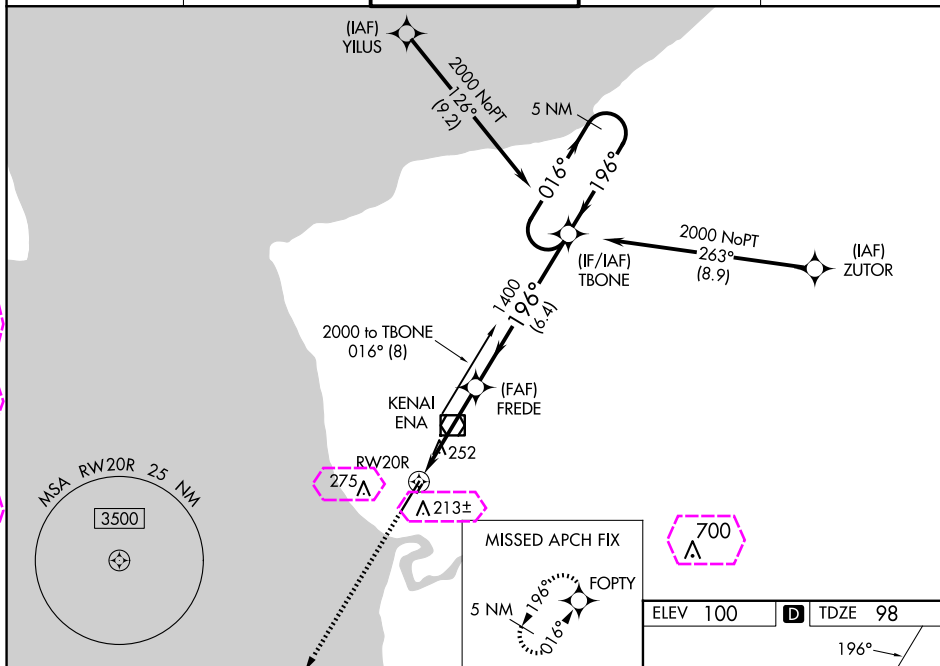
⚠ For uncompensated Baro-VNAV systems, LNAV/VNAV NA below -18°C (0°F) or above 54°C (130°F). Baro-VNAV and VDP NA when using Soldatona altimeter setting. Circling Rwy 2R, 20L NA at night. When local altimeter setting not received, use Soldatona altimeter setting and increase all DA 22 feet and all MDA 40 feet, increase LNAV visibility Cat C and D to RVR 5000. Circling Rwy 2W, 20W NA. # RVR 1800 authorized with use of FD or AP or HUD to DA. (NA when using Soldatona altimeter setting).

MALSR

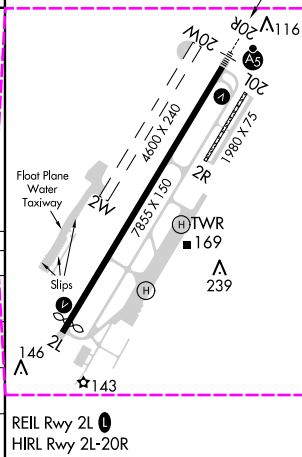


MISSED APPROACH:
Climb to 2000 direct
FOPTY and hold.

ATIS 133.35	ANCHORAGE CENTER 125.7 379.1	KENAI TOWER★ 121.3 (CTAF) 0 239.3	GND CON 118.75	KENAI RADIO 122.65
----------------	---------------------------------	--------------------------------------	-------------------	-----------------------



CATEGORY	A	B	C	D
LPV DA#	298/24 200 (200-½)			
LNAV/VNAV DA	348/24 250 (300-½)			
LNAV MDA	520/24 422 (500-½)		520/40 422 (500-¾)	
C CIRCLING	560-1 460 (500-1)	580-1 480 (500-1)	580-1½ 480 (500-1½)	680-2 580 (600-2)



KENAI, ALASKA
Amdt 4A 13SEP18

60°34'N-151°15'W

KENAI MUNI (ENA) (PAEN)

RNAV (GPS) RWY 20R

AK, 12 JUN 2025 to 07 AUG 2025

AK, 12 JUN 2025 to 07 AUG 2025

KENAI, ALASKA

AL-1235 (FAA)

25219

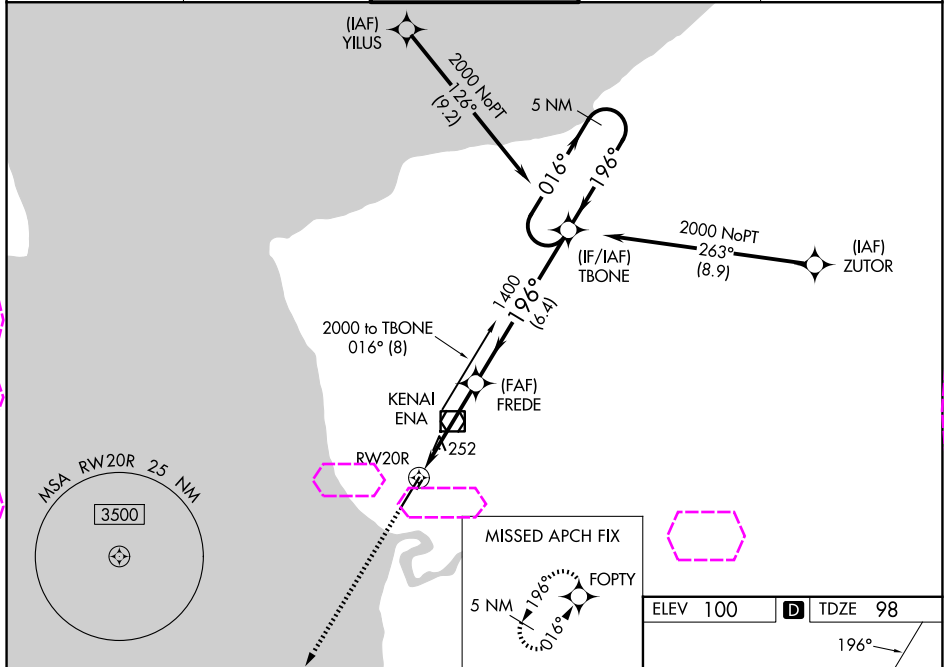
WAAS CH 99504 W20A	APP CRS 196°	Rwy Ldg 7575 TDZE 98 Apt Elev 100
--	------------------------	--

RNAV (GPS) RWY 20R

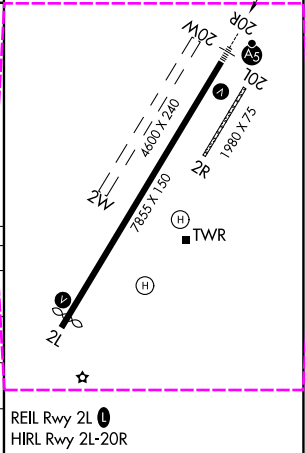
KENAI MUNI (ENA) (PAEN)

RNP APCH	For uncompensated Baro-VNAV systems, LNAV/VNAV NA below -18°C (0°F) or above 54°C (130°F). Baro-VNAV and VDP NA when using Soldotna altimeter setting. Circling Rwy 2R, 20L NA at night. When local altimeter setting not received, use Soldotna altimeter setting and increase all DA 22 feet and all MDA 40 feet, increase LNAV visibility Cat C and D to RVR 5000. Circling Rwy 2W, 20W NA. # RVR 1800 authorized with use of FD or AP or HUD to DA. (NA when using Soldotna altimeter setting).	MALSR 	MISSED APPROACH: Climb to 2000 direct FOPTY and hold.
----------	---	-----------	--

ATIS 133.35	ANCHORAGE CENTER 125.7 379.1	KENAI TOWER * 121.3 (CTAF) 239.3	GND CON 118.75	KENAI RADIO 122.65
-----------------------	--	--	--------------------------	------------------------------



2000	FOPTY				
*LNAV only	*1.2 NM to RWY 20R	1400	196°	016°	2000
RWY 20R		FREDE		TBONE	
1.2		2.7 NM		6.4 NM	
CATEGORY	A	B	C	D	
LPV DA#	298/24 200 (200-½)				
LNAV/DA	348/24 250 (300-½)				
LNAV MDA	520/24	422 (500-½)	520/40	422 (500-¾)	
CIRCLING	560-1 460 (500-1)	580-1 480 (500-1)	580-1½ 480 (500-1½)	680-2 580 (600-2)	



KENAI, ALASKA
Amdt 4A 13SEP18

60°34'N-151°15'W

KENAI MUNI (ENA) (PAEN)
RNAV (GPS) RWY 20R