



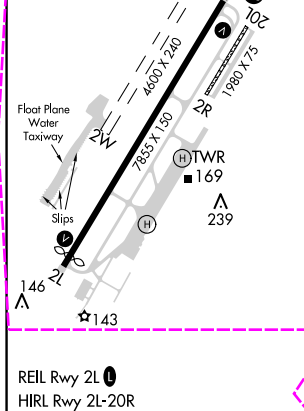
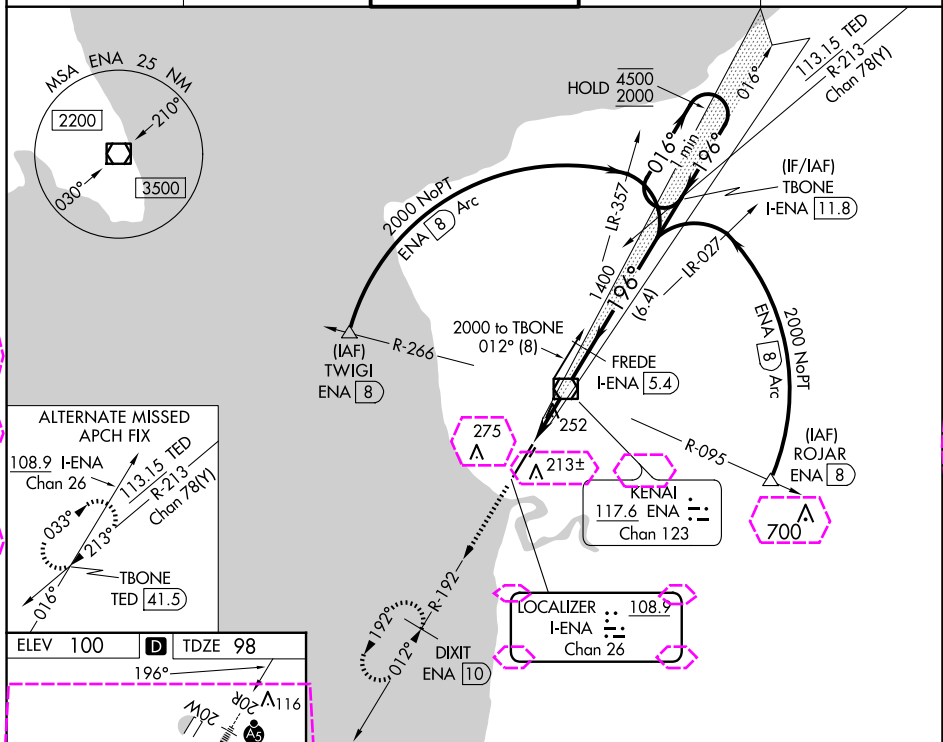


LOC/DME I-ENA <b>108.9</b> Chan <b>26</b>	APP CRS <b>196°</b>	Rwy Idg <b>7575</b> TDZE <b>98</b> Apt Elev <b>100</b>
---	------------------------	--

ILS Z or LOC Z RWY 20R  
KENAI MUNI (ENA) (PAEN)



DME required.		<div>MAISR</div> <div></div> <div></div>	MISSED APPROACH: Climb to 2200 on ENA VOR/DME R-192 to DIXIT/10 DME and hold.	
<div></div> <div>Circling NA to Rwys 2W and 20W. Circling Rwy 2R, 20L NA at night. # RVR 1800 authorized with use of FD or AP or HUD to DA.</div>				
ATIS 133.35	ANCHORAGE CENTER 125.7 379.1	<div>KENAI TOWER ★ 121.3 (CTAF)  239.3</div>	GND CON 118.75	KENAI RADIO 122.65

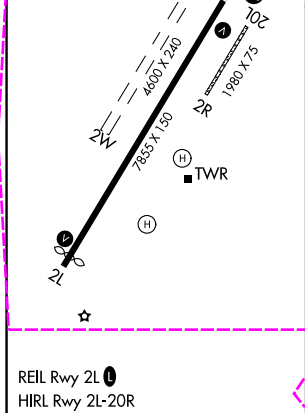
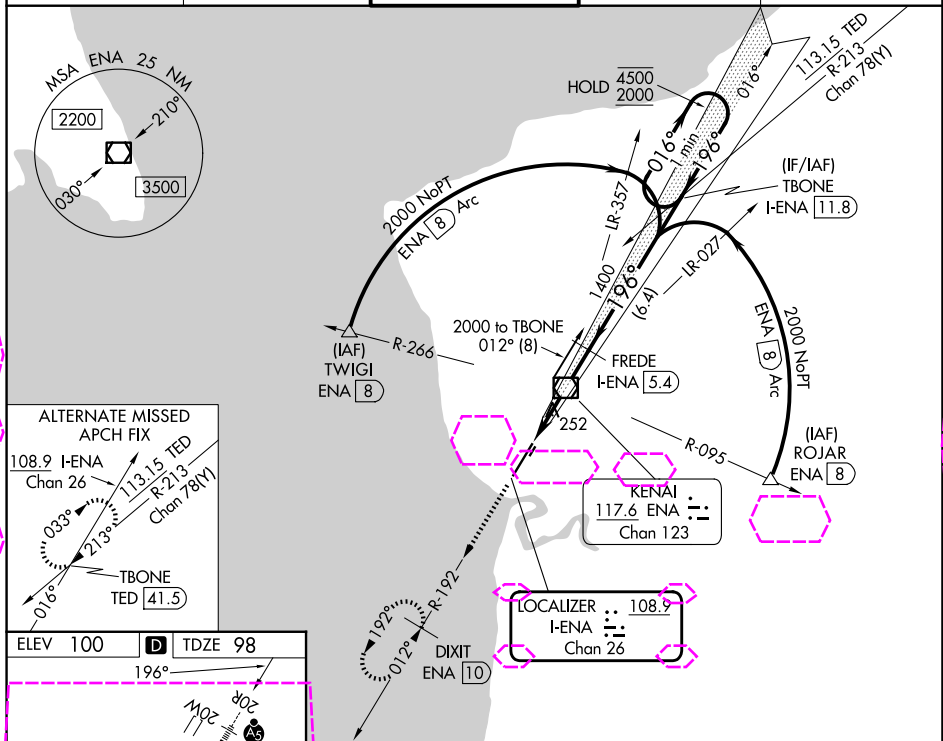


CATEGORY	A	B	C	D
S-ILS 20R#	298/24 200 (200-1/2)			
S-LOC 20R	520/24 422 (500-1/2)		520/40 422 (500-3/4)	
<b>CIRCLING</b>	560-1 460 (500-1)	580-1 480 (500-1)	580-1 1/2 480 (500-1 1/2)	680-2 580 (600-2)

LOC/DME FENA <b>108.9</b> Chan <b>26</b>	APP CRS <b>196°</b>	Rwy Ldg <b>7575</b> TDZE <b>98</b> Apt Elev <b>100</b>
--	------------------------	--

ILS Z or LOC Z RWY 20R  
KENAI MUNI (ENA) (PAEN)

DME required.		<div>MAISR</div> <div></div>	MISSED APPROACH: Climb to 2200 on ENA VOR/DME R-192 to DIXIT/10 DME and hold.	
<div></div> <div>Circling NA to Rwys 2W and 20W. Circling Rwy 2R, 20L NA at night. # RVR 1800 authorized with use of FD or AP or HUD to DA.</div>				
ATIS 133.35	ANCHORAGE CENTER 125.7 379.1	<div>KENAI TOWER ★ 121.3 (CTAF) 0 239.3</div>	GND CON 118.75	KENAI RADIO 122.65



Use I-ENA DME when on the localizer course.

CATEGORY	A	B	C	D
S-ILS 20R#	298/24 200 (200-½)			
S-LOC 20R	520/24 422 (500-½)	520/40 422 (500-¾)		
CIRCLING	560-1 460 (500-1)	580-1 480 (500-1)	580-1½ 480 (500-½)	680-2 580 (600-2)