

KENAI MUNI (ENA) (PAEN)
ILS Y or LOC Y RWY 20R

LOC/DME I-ENA 108.9 Chan 26	APP CRS 196°	Rwy Ldg 7575 TDZE 98 Apt Elev 100
---	------------------------	--

ILS Y or LOC Y RWY 20R
KENAI MUNI (ENA) (PAEN)

TACAN required.

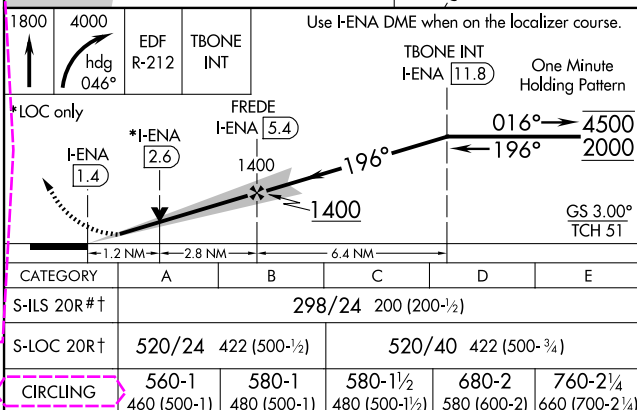
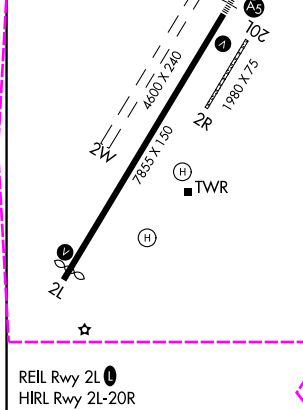
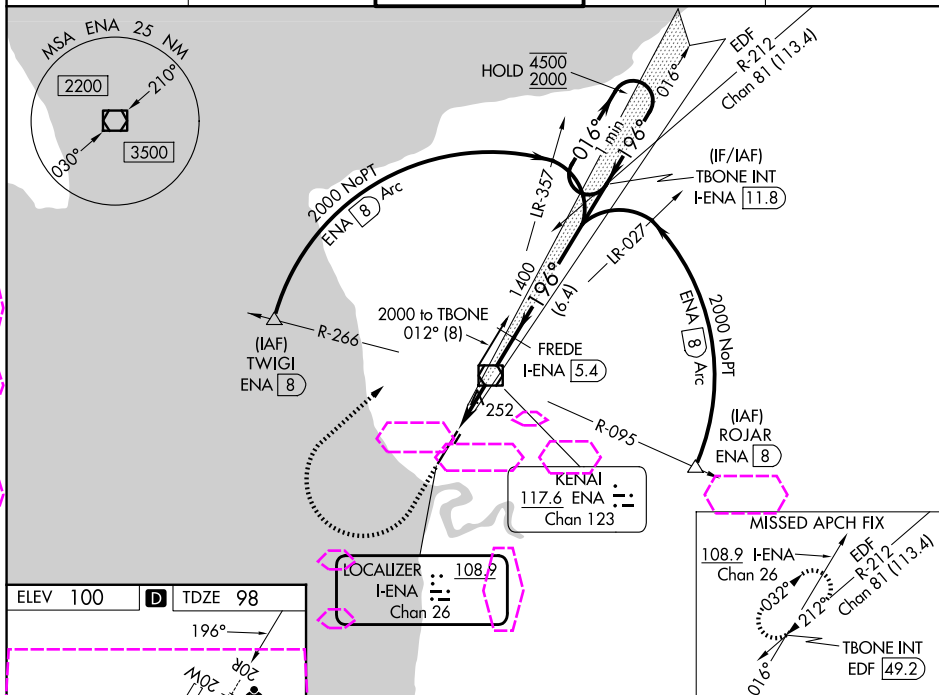
V
A Circling NA to Rwy 2W and 20W. Circling Rwy 2R, 20L NA at night. For inop ALS, increase S-ILS 20R Cat E visibility to RVR 4000. For inop ALS, increase S-LOC 20R Cat E visibility to 1¼ SM.
RVR 1800 authorized with use of FD or AP or HUD to DA.

MALSR

MISSED APPROACH: Climb to 1800 then climbing right turn to 4000 on heading 046° and on EDF TACAN R-212 to TBONE INT/EDF 49.2 DME and hold

† Missed approach requires minimum climb of 800 feet per NM to 4000; if unable to meet climb gradient, see ILS Z or LOC Z RWY 20R.

ATIS 133.35	ANCHORAGE CENTER 125.7 379.1	KENAI TOWER* 121.3 (CTAF) 239.3	GND CON 118.75	KENAI RADIO 122.65
-----------------------	--	---	--------------------------	------------------------------



KENAI, ALASKA
Orig 15AUG19

KENAI MUNI (ENA) (PAEN)

60°34'N-151°15'W

ILS Y or LOC Y RWY 20R

AK, 07 AUG 2025 to 02 OCT 2025