

FAIRBANKS, ALASKA

AL-1234 (FAA)

25107

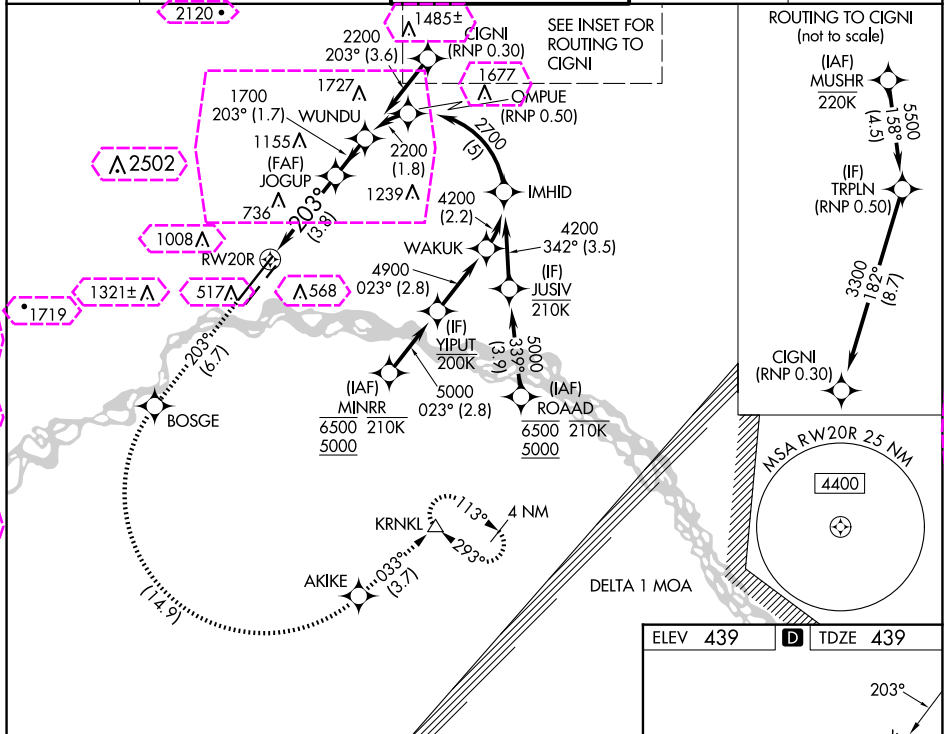
APP CRS	Rwy Idg	11050
203°	TDZE	439
	Apt Elev	439

RNAV (RNP) Z RWY 20R

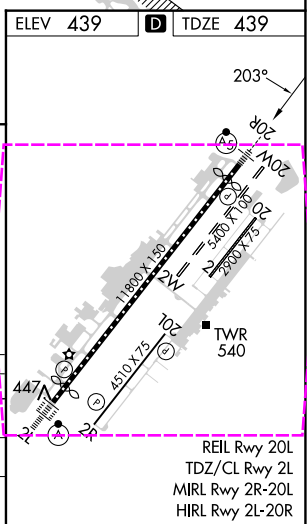
FAIRBANKS INTL (FAI) (PAFA)

RNP AR APCH - GPS.	MALSR	MISSED APPROACH: Climb to 4000 on track 203° to BOSGE then left turn to AKIKE then on track 033° to KRNLK and hold.
-29°C For uncompensated Baro-VNAV systems, procedure NA below -18°C or above 54°C. For inop ALS, increase RNP 0.30 all Cats visibility to 1 1/2 SM.		

ATIS	FAIRBANKS APP CON	FAIRBANKS TOWER	GND CON	CLNC DEL
124.4	125.35 363.2	118.3 257.8	121.9	127.6



4000	BOSGE	AKIKE	tr 033°	KRNLK	See planview for multiple IF locations.
tr 203°					WUNDU
VGSI and RNAV glidepath not coincident (VGSI Angle 3.00/TCH 74).					
RWY 20R					
1700 203° 2200					
GP 3.00° TCH 56					
3.8 NM 1.7 NM					
CATEGORY	A	B	C	D	
RNP 0.10 DA	763/26 324 (400-1/2)				
RNP 0.30 DA	923/50 484 (500-1)				
AUTHORIZATION REQUIRED					



FAIRBANKS, ALASKA
Amdt 2 05OCT23

64°49'N-147°51'W

FAIRBANKS INTL (FAI) (PAFA)
RNAV (RNP) Z RWY 20R

FAIRBANKS, ALASKA

AL-1234 (FAA)

25219

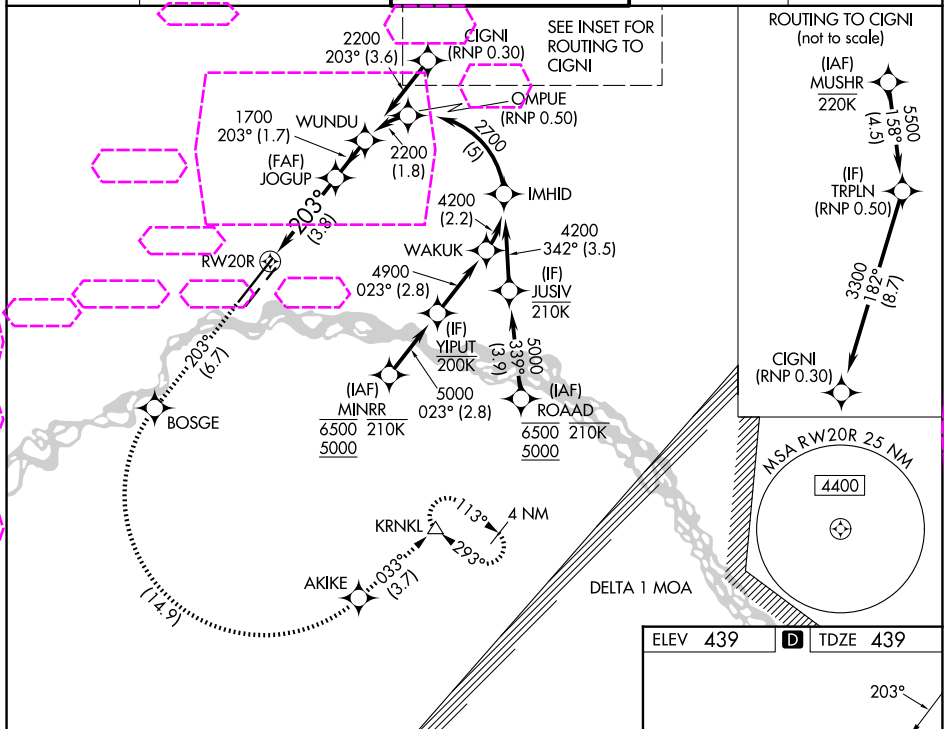
APP CRS	Rwy Ldg	11050
203°	TDZE	439
	Apt Elev	439

RNAV (RNP) Z RWY 20R

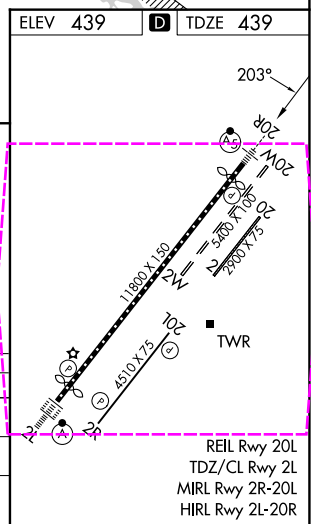
FAIRBANKS INTL (FAI) (PAFA)

RNP AR APCH - GPS.	MALSR	MISSED APPROACH: Climb to 4000 on track 203° to BOSGE then left turn to AKIKE then on track 033° to KRNLK and hold.
▼ -29°C For uncompensated Baro-VNAV systems, procedure NA below -18°C or above 54°C. For inop ALS, increase RNP 0.30 all Cats visibility to 1½ SM.	AS	

ATIS	FAIRBANKS APP CON	FAIRBANKS TOWER	GND CON	CLNC DEL
124.4	125.35 363.2	118.3 257.8	121.9	127.6



4000	BOSGE	AKIKE	tr 033°	KRNLK	See planview for multiple IF locations.
tr 203°					
VGSI and RNAV glidepath not coincident (VGSI Angle 3.00/TCH 74).					
RWY20R					
1700 203° 2200					
GP 3.00° TCH 56					
3.8 NM 1.7 NM					
CATEGORY	A	B	C	D	
RNP 0.10 DA	763/26 324 (400-½)				
RNP 0.30 DA	923/50 484 (500-1)				
AUTHORIZATION REQUIRED					



FAIRBANKS, ALASKA
Amdt 2 05OCT23

64°49'N-147°51'W

FAIRBANKS INTL (FAI) (PAFA) RNAV (RNP) Z RWY 20R

AK, 07 AUG 2025 to 02 OCT 2025

AK, 07 AUG 2025 to 02 OCT 2025