

FAIRBANKS, ALASKA

AL-1234 (FAA)

25107

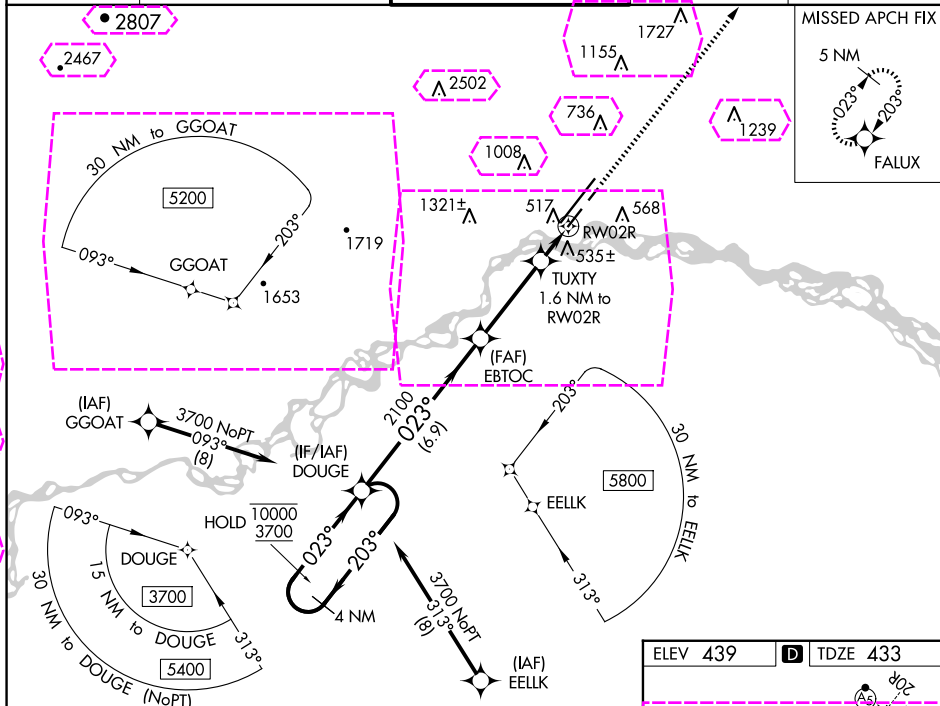
WAAS CH 53612 W02A	APP CRS 023°	Rwy Idg 4510 TDZE 433 Apt Elev 439
--	------------------------	---

RNAV (GPS) RWY 2R

FAIRBANKS INTL (FAI) (PAFA)

RNP APCH - GPS.	<p>⚠ Circling NA west of Rwy 2L-20R. Circling NA to Rwy 2W and 20W. Rwy 2R helicopter visibility reduction below $\frac{3}{4}$ SM NA. For uncompensated Baro-VNAV systems, LNAV/VNAV NA below -21°C or above 54°C.</p>	<p>MISSED APPROACH: Climb to 4900 direct FALUX and hold, continue climb-in-hold to 4900.</p>
-----------------	---	--

ATIS 124.4	FAIRBANKS APP CON 125.35 363.2	FAIRBANKS TOWER 118.3 257.8	GND CON 121.9	CLNC DEL 127.6
----------------------	--	---------------------------------------	-------------------------	--------------------------



4 NM Holding Pattern		DOUGE		EBTOC		TUTXY 1.6 NM to RW02R		4900 FALUX	
10000 ← 203° 3700 → 023°		2100		2100		1 NM to RW02R		RW02R	
GP 3.00° TCH 40		6.9 NM		3.5 NM		0.6		1 NM	
CATEGORY		A		B		C		D	
LPV DA		683-7/8		250 (300-7/8)					
LNAV/ VNAV DA		731-1		298 (300-1)					
LNAV MDA		800-1		367 (400-1)					
CIRCLING		880-1 441 (500-1)		900-1 461 (500-1)		900-1½ 461 (500-1½)		1020-2 581 (600-2)	

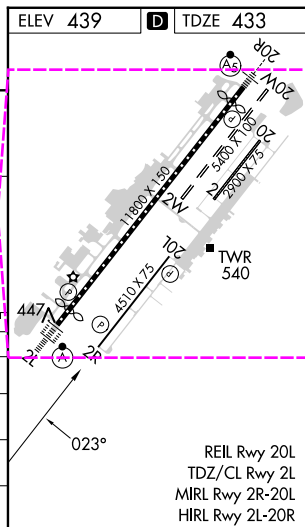
REIL Rwy 20L
TDZ/CL Rwy 2L
MIRL Rwy 2R-20L
HIRL Rwy 2L-20R

FAIRBANKS, ALASKA

Amdt 1B 12AUG21

64°49'N-147°51'W

FAIRBANKS INTL (FAI) (PAFA)
RNAV (GPS) RWY 2R



REIL Rwy 20L
TDZ/CL Rwy 2L
MIRL Rwy 2R-20L
HIRL Rwy 2L-20R

AK, 12 JUN 2025 to 07 AUG 2025

AK, 12 JUN 2025 to 07 AUG 2025

FAIRBANKS, ALASKA

AL-1234 (FAA)

25219

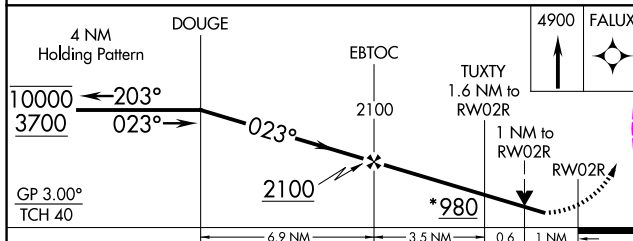
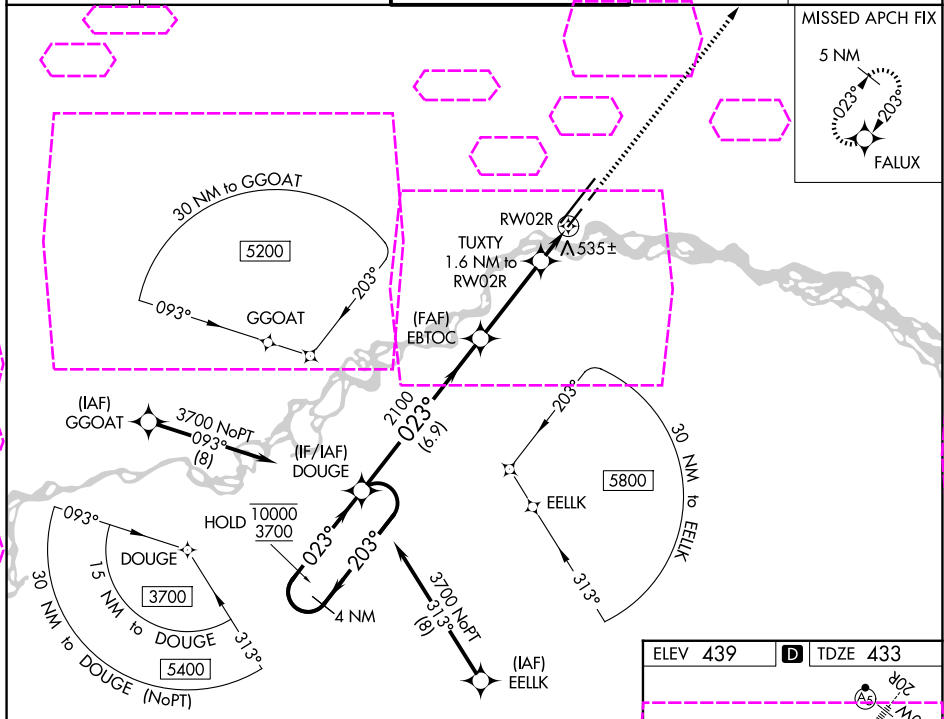
WAAS CH 53612 W02A	APP CRS 023°	Rwy Ldg 4510 TDZE 433 Apt Elev 439
--	------------------------	---

RNAV (GPS) RWY 2R

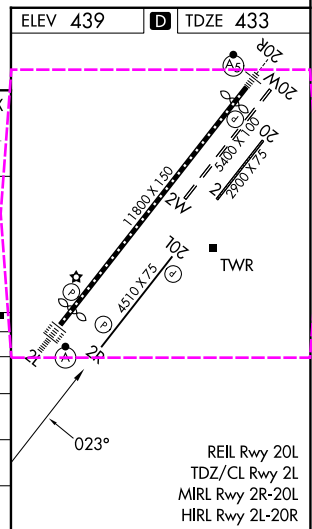
FAIRBANKS INTL (FAI) (PAFA)

RNP APCH - GPS.	MISSED APPROACH: Climb to 4900 direct FALUX and hold, continue climb-in-hold to 4900.
-29°C	Circling NA west of Rwy 2L-20R. Circling NA to Rwy 2W and 20W. Rwy 2R helicopter visibility reduction below 3/4 SM NA. For uncompensated Baro-VNAV systems, LNAV/VNAV NA below -21°C or above 54°C.

ATIS 124.4	FAIRBANKS APP CON 125.35 363.2	FAIRBANKS TOWER 118.3 257.8	GND CON 121.9	CLNC DEL 127.6
----------------------	--	---------------------------------------	-------------------------	--------------------------



CATEGORY	A	B	C	D
LPV DA		683-7/8	250 (300-7/8)	
LNAV/VNAV DA		731-1	298 (300-1)	
LNAV MDA		800-1	367 (400-1)	
CIRCLING	880-1 441 (500-1)	900-1 461 (500-1)	900-1 1/2 461 (500-1 1/2)	1020-2 581 (600-2)



FAIRBANKS, ALASKA
Amdt 1B 12AUG21

64°49'N-147°51'W

FAIRBANKS INTL (FAI) (PAFA)
RNAV (GPS) RWY 2R

AK, 07 AUG 2025 to 02 OCT 2025

AK, 07 AUG 2025 to 02 OCT 2025