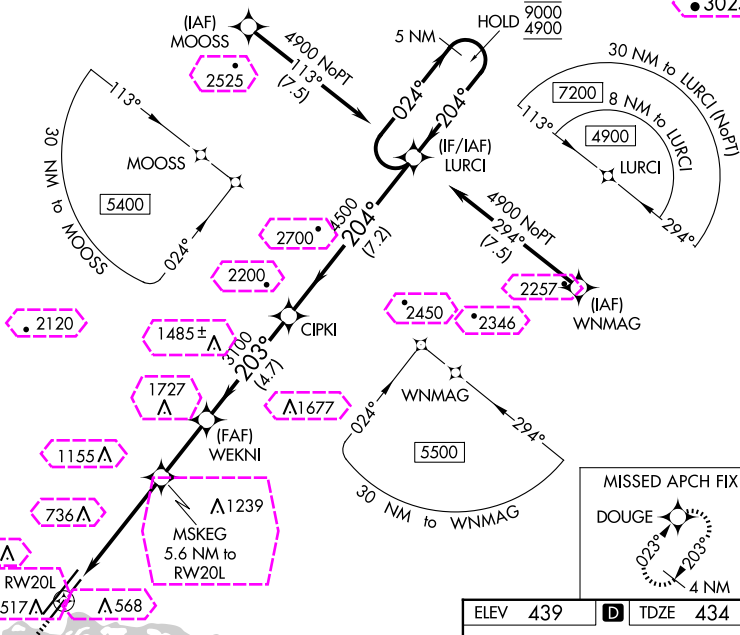
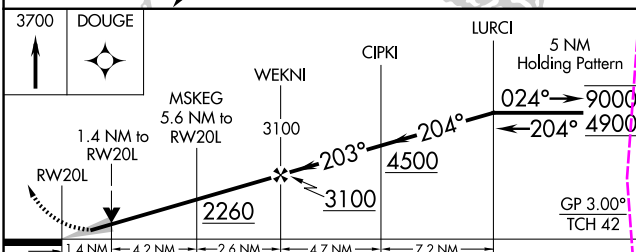


RNAV (GPS) RWY 20L
FAIRBANKS INTL (FAI) (PAFA)

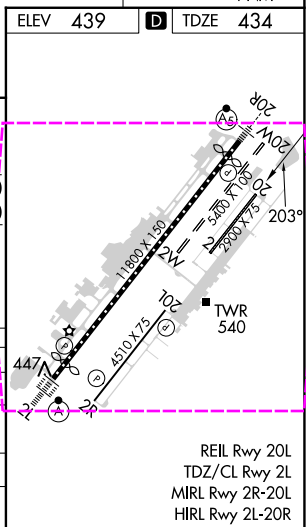
MISSED APPROACH: Climb to 3700 direct DOUGE and hold, continue climb-in-hold to 3700.

CLNC DEL
127.6

AK, 12 JUN 2025 to 07 AUG 2025



CATEGORY	A	B	C	D
LPV DA	684- ³ / ₄ 250 (300- ³ / ₄)			
LNAV/ VNAV DA	701- ⁷ / ₈ 267 (300- ⁷ / ₈)			
LNAV MDA	920-1 486 (500-1)		920-1 ¹ / ₈ 486 (500-1 ¹ / ₈)	
C CIRCLING	920-1 481 (500-1)		920-1 ¹ / ₂ 1000-2 481 (500-1 ¹ / ₂) 561 (600-2)	

FAIRBANKS INTL (FAI) (PAFA)
RNAV (GPS) RWY 20L

FAIRBANKS, ALASKA

AL-1234 (FAA)

25219

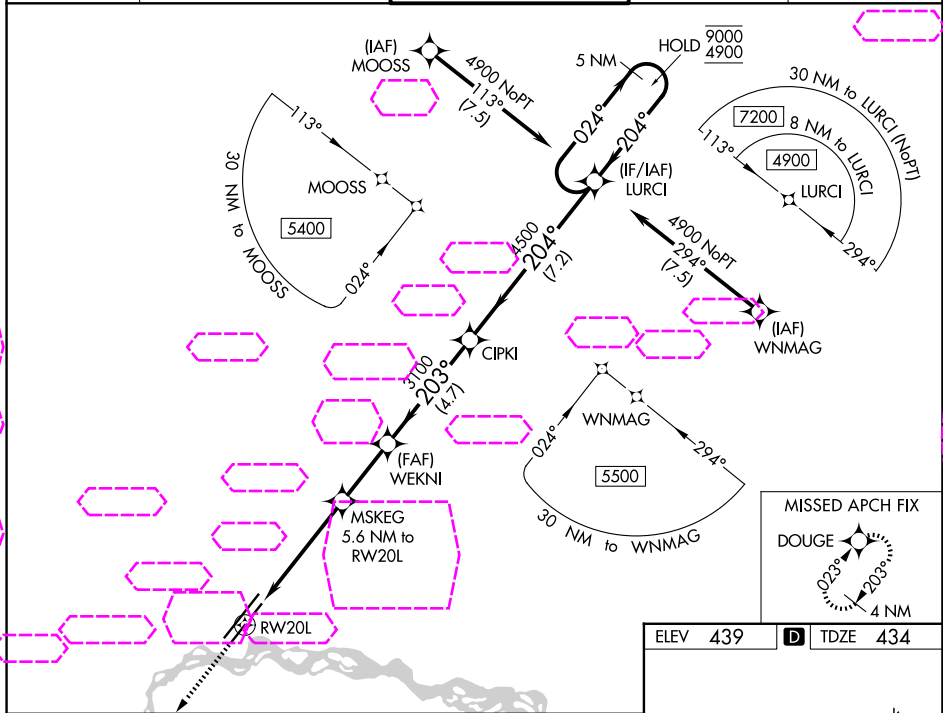
WAAS CH 93812 W20A	APP CRS 203°	Rwy Ldg TDZE Apt Elev	4510 434 439
--	------------------------	-----------------------------	---

RNAV (GPS) RWY 20L

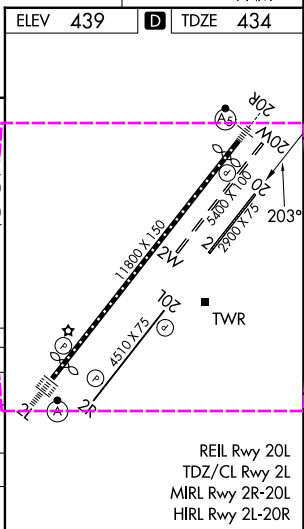
FAIRBANKS INTL (FAI) (PAFA)

RNP APCH-GPS.	MISSED APPROACH: Climb to 3700 direct DOUGE and hold, continue climb-in-hold to 3700.
-29°C	Circling NA west of Rwy 2L-20R. For uncompensated Baro-VNAV systems, LNAV/VNAV NA below -20°C or above 54°C. Circling NA to Rwys 2W/20W and 2/20.

ATIS 124.4	FAIRBANKS APP CON 125.35 363.2	FAIRBANKS TOWER 118.3 257.8	GND CON 121.9	CLNC DEL 127.6
----------------------	--	---------------------------------------	-------------------------	--------------------------



3700	DOUGE	LURCI	5 NM Holding Pattern
1.4 NM to RW20L	MSKEG 5.6 NM to RW20L	WEKNI 3100	204° 9000
1.4 NM	4.2 NM	2.6 NM	4.7 NM
2260	3100	4500	204° 4900
GP 3.00°	TCH 42		
CATEGORY	A	B	C
LPV DA	684-3/4	250 (300-3/4)	
LNAV/VNAV DA	701-7/8	267 (300-7/8)	
LNAV MDA	920-1 486 (500-1)	920-1 3/8 486 (500-1 3/8)	
CIRCLING	920-1 481 (500-1)	920-1 1/2 481 (500-1 1/2)	1000-2 561 (600-2)



FAIRBANKS, ALASKA
Amdt 2 07OCT21

64°49'N-147°51'W

FAIRBANKS INTL (FAI) (PAFA)

RNAV (GPS) RWY 20L