

ILS Z or LOC Z RWY 20R
FAIRBANKS INTL (FAI) (PAFA)

DME required. DME required for procedure entry.



T Circling NA west of Rwy 2L-20R. Circling NA to Rwy 2W
A and 20W. For inop ALS increase S-ILS 20R Cat E visibility
☑ to RVR 4000, increase S-LOC 20R Cat E visibility to 1 $\frac{3}{4}$ SM.
 -29°C #RVR 1800 authorized with use of FD or AP or HUD to DA.

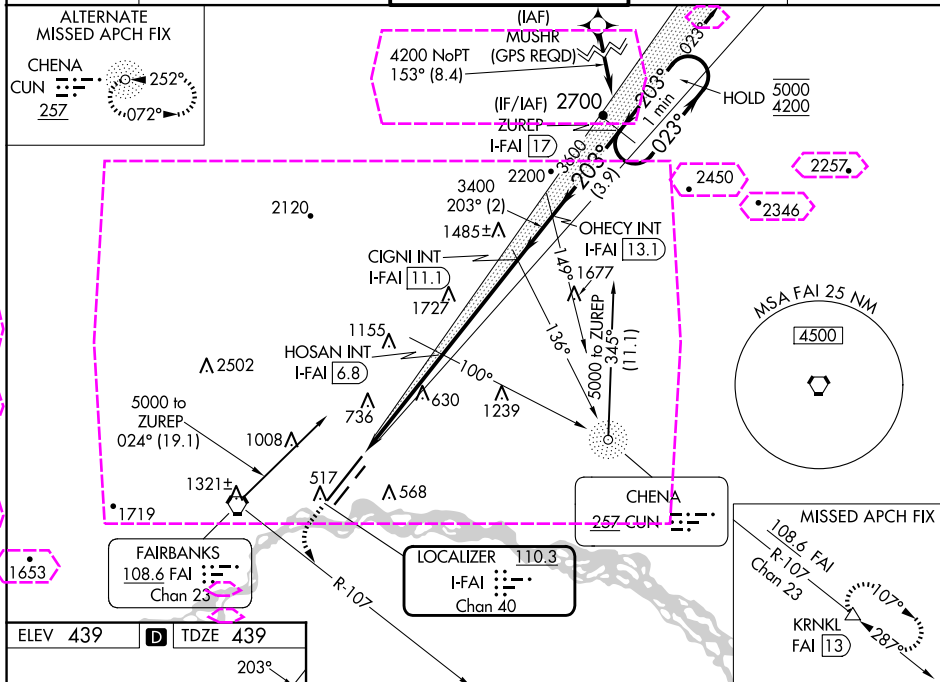


MISSED APPROACH: Climb to 1100 then climbing left turn to 3000 on FAI VORTAC R-107 to KRNL/FAI VORTAC 13 DME and hold.

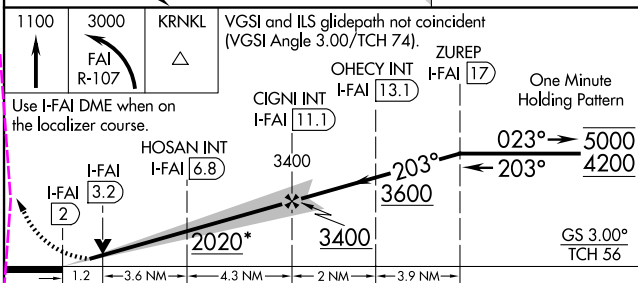
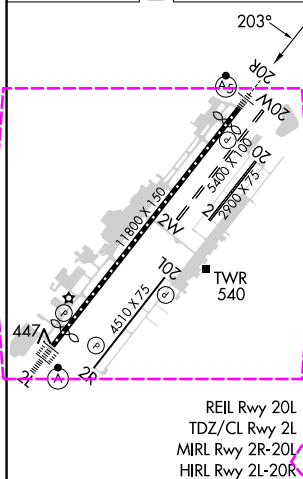
ATIS 124.4	FAIRBANKS APP CON 125.35 363.2	FAIRBANKS TOWER 118.3 257.8	GND CON 121.9	CLNC DEL 127.6
---------------	-----------------------------------	--------------------------------	------------------	-------------------


**ALTERNATE
MISSED APCH FIX**

CHENA
CUN  252°
257  072°



ELEV 439	D	TDZE 439
----------	----------	----------



CATEGORY	A	B	C	D	E
S-ILS 20R #	639/24 200 (200-½)				
S-LOC 20R	880/24 441 (500-½)		880/45 441 (500-¾)		
 CIRCLING	880-1 441 (500-1)	900-1 461 (500-1)	900-1½ 461 (500-1½)	1020-2 581 (600-2)	1060-2¼ 621 (700-2¼)

FAIRBANKS, ALASKA
Amdt 25C 12AUG21

64°49'N-147°51'W

FAIRBANKS INTL (FAI) (PAFA)

ILS Z or LOC Z RWY 20R

AK, 12 JUN 2025 to 07 AUG 2025

AK, 12 JUN 2025 to 07 AUG 2025

FAIRBANKS, ALASKA

AL-1234 (FAA)

25219

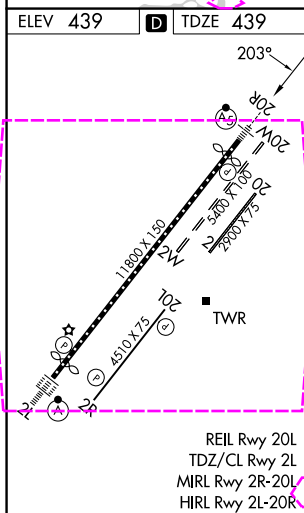
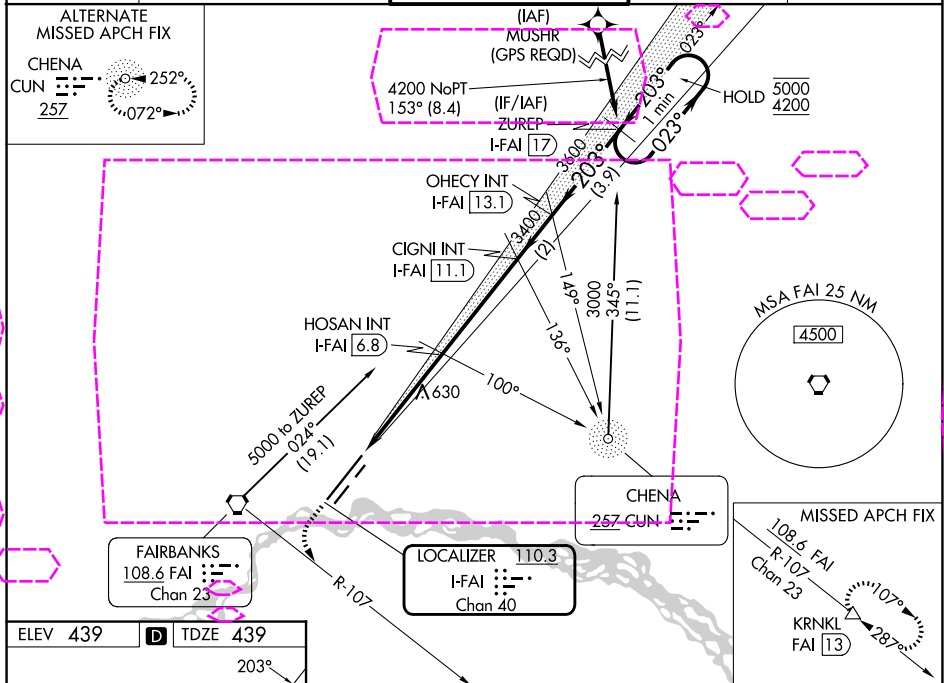
LOC/DME I-FAI 110.3 Chan 40	APP CRS 203°	Rwy Ldg 11050 TDZE 439 Apt Elev 439
---	------------------------	--

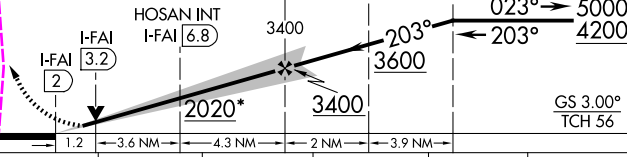
ILS Z or LOC Z RWY 20R

FAIRBANKS INTL (FAI) (PAFA)

DME required. DME required for procedure entry.	MALSR 	MISSED APPROACH: Climb to 1100 then climbing left turn to 3000 on FAI VORTAC R-107 to KRNLK/FAI VORTAC 13 DME and hold.
 -29°C		

ATIS 124.4	FAIRBANKS APP CON 125.35 363.2	FAIRBANKS TOWER 118.3 257.8	GND CON 121.9	CLNC DEL 127.6
----------------------	--	---------------------------------------	-------------------------	--------------------------



1100 ↑	3000 FAI R-107	KRNLK △	VGSI and ILS glidepath not coincident (VGSI Angle 3.00/TCH 74).				
Use I-FAI DME when on the localizer course.			CIGNI INT I-FAI 11.1	OHECY INT I-FAI 13.1	ZUREP I-FAI 17	One Minute Holding Pattern	
							
CATEGORY	A		B		C	D	E
S-ILS 20R#	639/24 200 (200-½)						
S-LOC 20R	880/24 441 (500-½)		880/45 441 (500-¾)				
CIRCLING	880-1 441 (500-1)	900-1 461 (500-1)	900-1½ 461 (500-1½)	1020-2 581 (600-2)	1060-2¼ 621 (700-2¼)		

FAIRBANKS, ALASKA
Amdt 25C 12AUG21

64°49'N-147°51'W

FAIRBANKS INTL (FAI) (PAFA)
ILS Z or LOC Z RWY 20R