

FAIRBANKS, ALASKA

AL-1234 (FAA)

25107

LOC/DME I-FAI 110.3 Chan 40	APP CRS 203°	Rwy Idg 11050 TDZE 439 Apt Elev 439
---	------------------------	--

ILS Z RWY 20R (SA CAT I & II)

FAIRBANKS INTL (FAI) (PAFA)

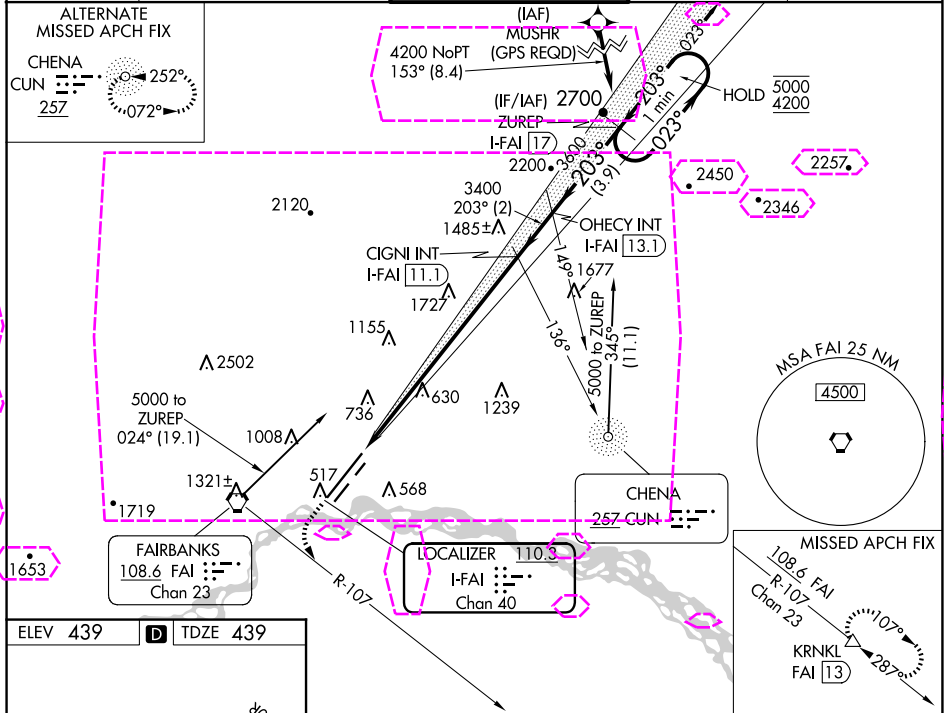
DME required. DME required for procedure entry.

SA CAT I: Requires specific OPSPEC, MSPEC, or LOA approval.
SA CAT II: Reduced lighting: requires specific OPSPEC, MSPEC, or LOA approval and use of autoland or HUD to touchdown.

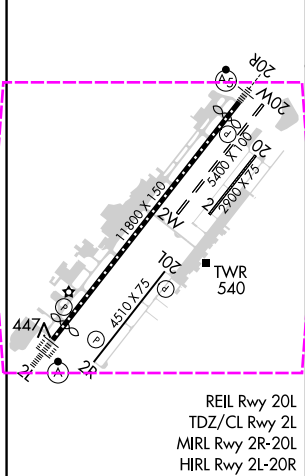
MALSR

MISSED APPROACH: Climb to 1100 then climbing left turn to 3000 on FAI VORTAC R-107 to KRNL/FAI VORTAC 13 DME and hold.

ATIS 124.4	FAIRBANKS APP CON 125.35 363.2	FAIRBANKS TOWER 118.3 257.8	GND CON 121.9	CLNC DEL 127.6
----------------------	--	---------------------------------------	-------------------------	--------------------------



ELEV 439	TDZE 439
----------	----------



1100 3000 KRNL

↑ FAI R-107

VGSI and ILS glidepath not coincident (VGSI Angle 3.00/TCH 74).

OHECY INT I-FAI 13.1 ZUREP I-FAI 17

CIGNI INT I-FAI 11.1

Use I-FAI DME when on the localizer course.

3400 3600 3400

023° 203° 023°

5000 4200

GS 3.00° TCH 56

One Minute Holding Pattern

CATEGORY	A	B	C	D
S-ILS 20R	SA CAT I	RA 149/14	150	DA 589
S-ILS 20R	SA CAT II	RA 99/12	100	DA 539

SA CATEGORY I & II ILS SPECIAL AIRCREW & AIRCRAFT CERTIFICATION REQUIRED

AK, 12 JUN 2025 to 07 AUG 2025

AK, 12 JUN 2025 to 07 AUG 2025

FAIRBANKS, ALASKA

AL-1234 (FAA)

25219

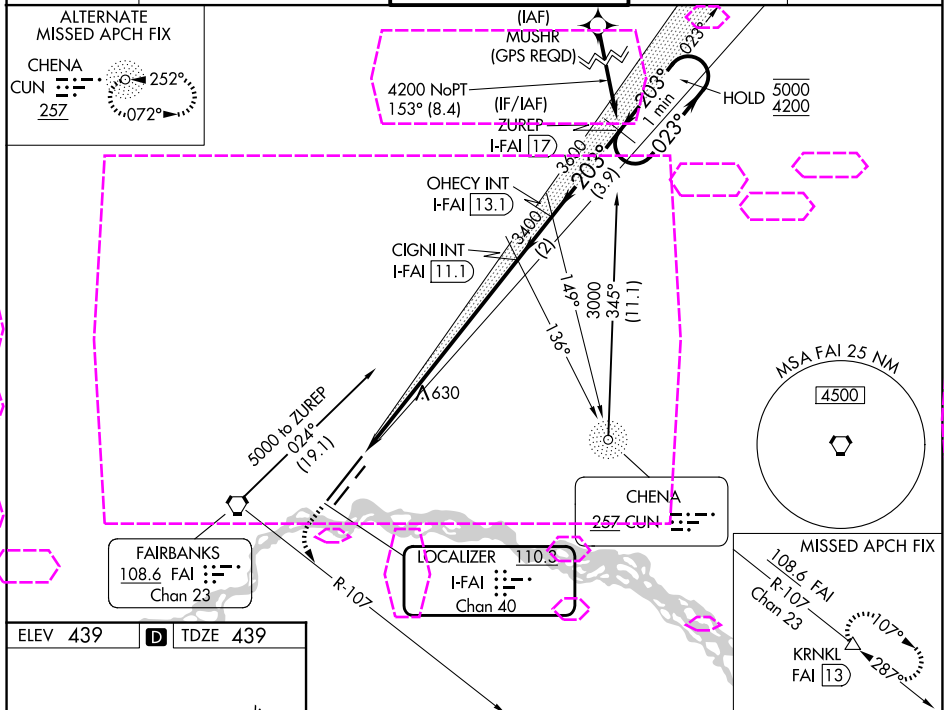
LOC/DME I-FAI 110.3 Chan 40	APP CRS 203°	Rwy Ldg 11050 TDZE 439 Apt Elev 439
---	------------------------	--

ILS Z RWY 20R (SA CAT I & II)

FAIRBANKS INTL (FAI) (PAFA)

DME required. DME required for procedure entry.	MALSR 	MISSED APPROACH: Climb to 1100 then climbing left turn to 3000 on FAI VORTAC R-107 to KRNLK/FAI VORTAC 13 DME and hold.
SA CAT I: Requires specific OPSPEC, MSPEC, or LOA approval. SA CAT II: Reduced lighting: requires specific OPSPEC, MSPEC, or LOA approval and use of autoland or HUD to touchdown.		

ATIS 124.4	FAIRBANKS APP CON 125.35 363.2	FAIRBANKS TOWER 118.3 257.8	GND CON 121.9	CLNC DEL 127.6
----------------------	--	---------------------------------------	-------------------------	--------------------------



ELEV 439	TDZE 439	1100 3000 KRNLK		VGSI and ILS glidepath not coincident (VGSI Angle 3.00/TCH 74).	OHECY INT I-FAI 13.1	ZUREP I-FAI 17	One Minute Holding Pattern
Use I-FAI DME when on the localizer course.		CIGNI INT I-FAI 11.1		OHECY INT I-FAI 13.1		ZUREP I-FAI 17	
1800 x 150		5000 x 175		3400		3600	
TWR		20R		203°		023°	
REIL Rwy 20L		TDZ/CL Rwy 2L		MIRL Rwy 2R-20L		HIRL Rwy 2L-20R	
FAIRBANKS, ALASKA		Amdt 25C 12AUG21		64°49'N-147°51'W		ILS Z RWY 20R (SA CAT I & II)	

SA CATEGORY I & II ILS SPECIAL AIRCREW & AIRCRAFT CERTIFICATION REQUIRED

FAIRBANKS INTL (FAI) (PAFA)

ILS Z RWY 20R (SA CAT I & II)