

FAIRBANKS, ALASKA

AL-1234 (FAA)

25107

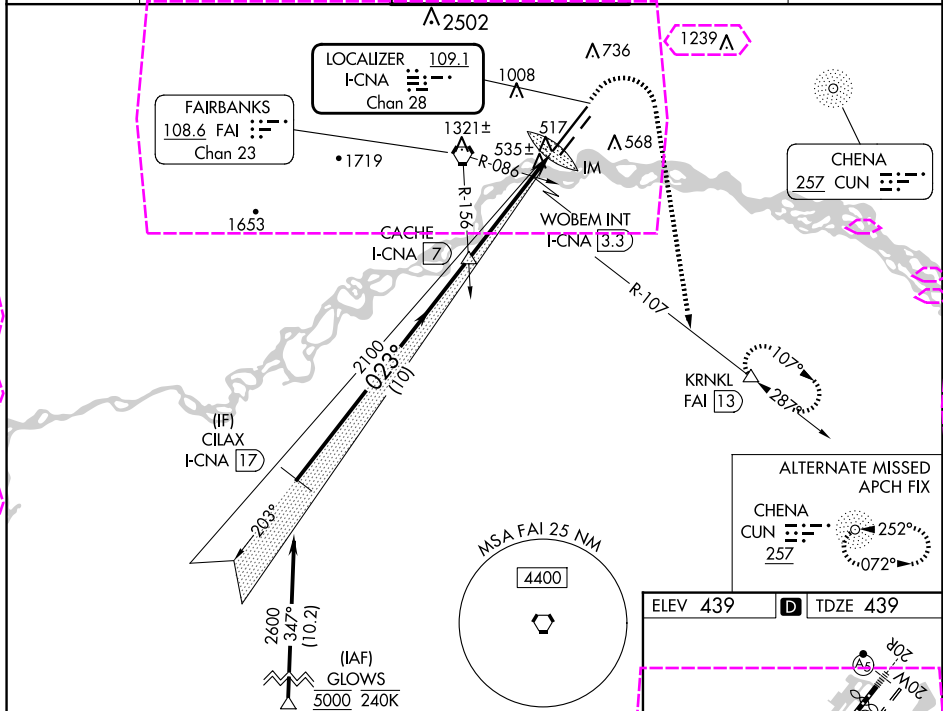
LOC/DME I-CNA	APP CRS	Rwy Idg
109.1	023°	11050
Chan 28		TDZE 439
		Apt Elev 439

ILS or LOC RWY 2L

FAIRBANKS INTL (FAI) (PAFA)

RNP APCH - GPS.	ALSIF-2	MISSED APPROACH: Climb to 900 then climbing right turn to 5000 on heading 170° and FAI VORTAC R-107 to KRNL/FAI 13 DME and hold, continue climb-in-hold to 5000.
DME required.		
Circling NA west of Rwy 2L-20R. Circling NA to Rwys 2W and 20W. For inop ALS, increase S-ILS 2L Cat E visibility to RVR 4000 and S-LOC 2L Cat C/D/E visibility to RVR 5500.		
-29°C		

ATIS	FAIRBANKS APP CON	FAIRBANKS TOWER	GND CON	CUNC DEL
124.4	125.35 363.2	118.3 257.8	121.9	127.6



VGSI and ILS glidepath not coincident (VGSI Angle 3.00/TCH 73).					
CILAX I-CNA 17	2600	023°	2100	900	1000
GS 3.00° TCH 56					
10 NM	3.7 NM	1.1 NM	0.2		
CATEGORY	A	B	C	D	E
S-ILS 2L	639/18 200 (200-½)				
S-LOC 2L	800/24	361 (400-½)	800/35	361 (400-¾)	
CIRCLING	880-1 441 (500-1)	900-1 461 (500-1)	900-1½ 461 (500-1½)	1020-2 581 (600-2)	1060-2¼ 621 (700-2¼)

FAIRBANKS, ALASKA
Amdt 11 05OCT23

64°49'N-147°51'W

FAIRBANKS INTL (FAI) (PAFA)
ILS or LOC RWY 2L

AK, 12 JUN 2025 to 07 AUG 2025

AK, 12 JUN 2025 to 07 AUG 2025

FAIRBANKS, ALASKA

AL-1234 (FAA)

25219

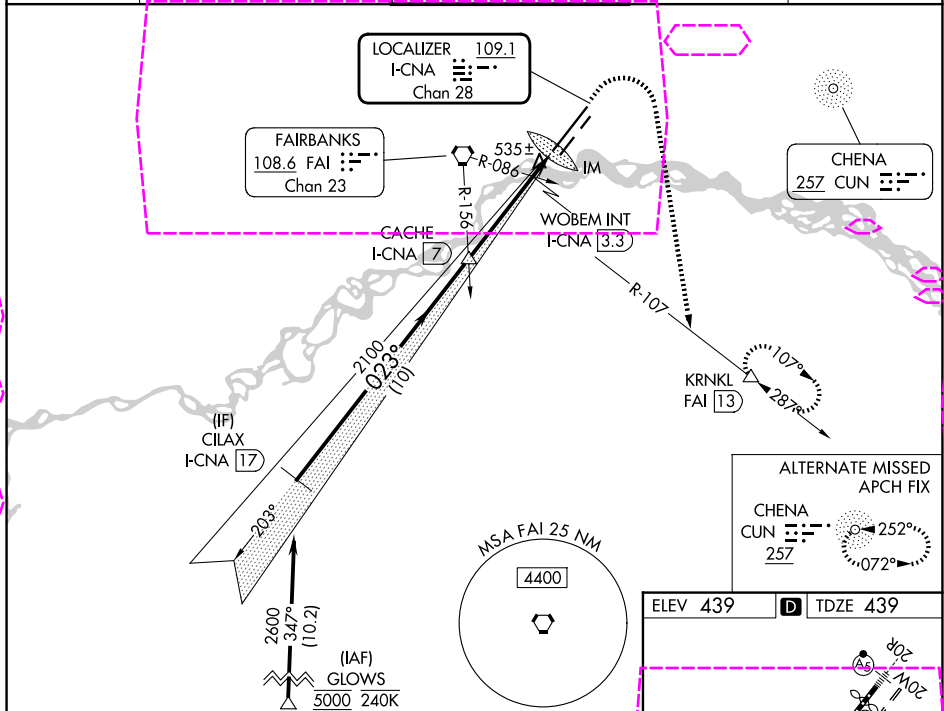
LOC/DME I-CNA	APP CRS	Rwy Ldg
109.1	023°	11050
Chan 28		TDZE 439
		Apt Elev 439

ILS or LOC RWY 2L

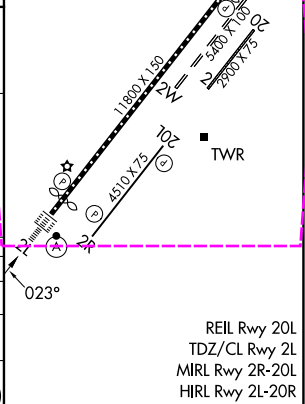
FAIRBANKS INTL (FAI) (PAFA)

RNP APCH - GPS.	ALSIF-2	MISSED APPROACH: Climb to 900 then climbing right turn to 5000 on heading 170° and FAI VORTAC R-107 to KRNL/FAI 13 DME and hold, continue climb-in-hold to 5000.
DME required.		
Circling NA west of Rwy 2L-20R. Circling NA to Rwys 2W and 20W. For inop ALS, increase S-ILS 2L Cat E visibility to RVR 4000 and S-LOC 2L Cat C/D/E visibility to RVR 5500.		
-29°C		

ATIS	FAIRBANKS APP CON	FAIRBANKS TOWER	GND CON	CLNC DEL
124.4	125.35 363.2	118.3 257.8	121.9	127.6



VGSI and ILS glidepath not coincident (VGSI Angle 3.00/TCH 73).					
CILAX I-CNA 17	CACHE I-CNA 7	WOBEM INT I-CNA 3.3	IM	I-CNA 2	900
2600	2100	900	10 NM	3.7 NM	1.1 NM
GS 3.00° TCH 56	023°	2100	10 NM	3.7 NM	1.1 NM
CATEGORY	A	B	C	D	E
S-ILS 2L	639/18 200 (200-½)				
S-LOC 2L	800/24	361 (400-½)	800/35	361 (400-¾)	
CIRCLING	880-1	900-1	900-1½	1020-2	1060-2¼
	441 (500-1)	461 (500-1)	461 (500-1½)	581 (600-2)	621 (700-2¼)



FAIRBANKS, ALASKA
Amdt 11 05OCT23

64°49'N-147°51'W

FAIRBANKS INTL (FAI) (PAFA)
ILS or LOC RWY 2L

AK, 07 AUG 2025 to 02 OCT 2025

AK, 07 AUG 2025 to 02 OCT 2025