

FAIRBANKS, ALASKA

AL-1234 (FAA)

25107

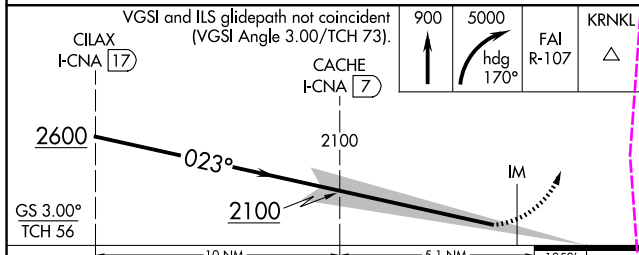
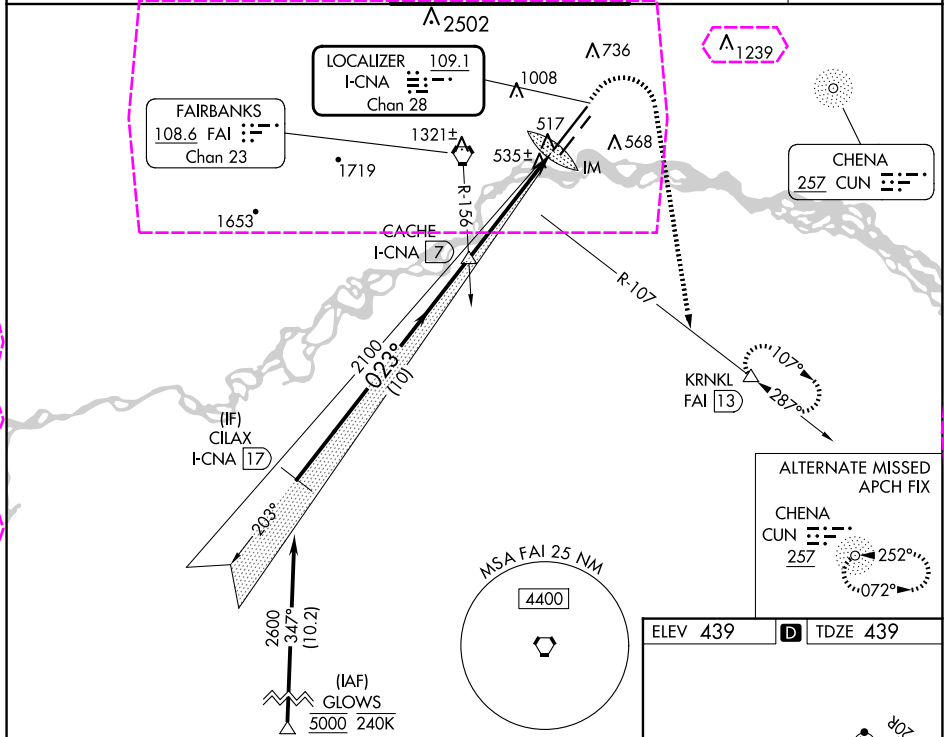
LOC/DME I-CNA 109.1 Chan 28	APP CRS 023°	Rwy Idg 11050 TDZE 439 Apt Elev 439
---	------------------------	--

ILS RWY 2L (SA CAT I)

FAIRBANKS INTL (FAI) (PAFA)

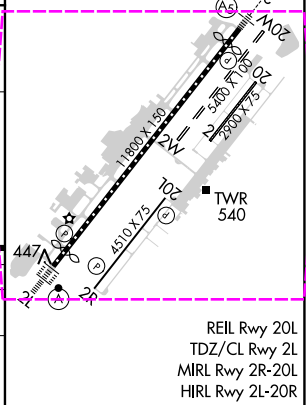
RNP APCH - GPS. DME required.	ALSF-2	MISSED APPROACH: Climb to 900 then climbing right turn to 5000 on heading 170° and FAI VORTAC R-107 to KRNL/FAI 13 DME and hold, continue climb-in-hold to 5000.
Requires specific OPSPEC, MSPEC, or LOA approval.		

ATIS 124.4	FAIRBANKS APP CON 125.35 363.2	FAIRBANKS TOWER 118.3 257.8	GND CON 121.9	CUNC DEL 127.6
----------------------	--	---------------------------------------	-------------------------	--------------------------



CATEGORY	A	B	C	D
S-ILS 2L	RA 139/14 150 DA 589			

SA CATEGORY I ILS - SPECIAL AIRCREW & AIRCRAFT CERTIFICATION REQUIRED



FAIRBANKS, ALASKA
Amdt 11 05OCT23

64°49'N-147°51'W

FAIRBANKS INTL (FAI) (PAFA)
ILS RWY 2L (SA CAT I)

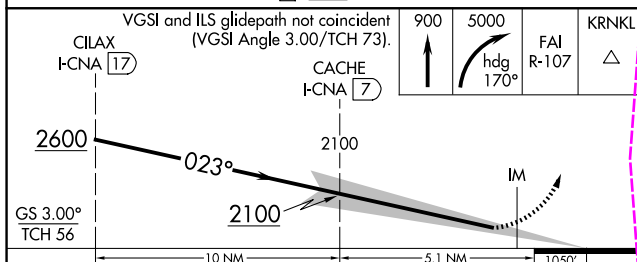
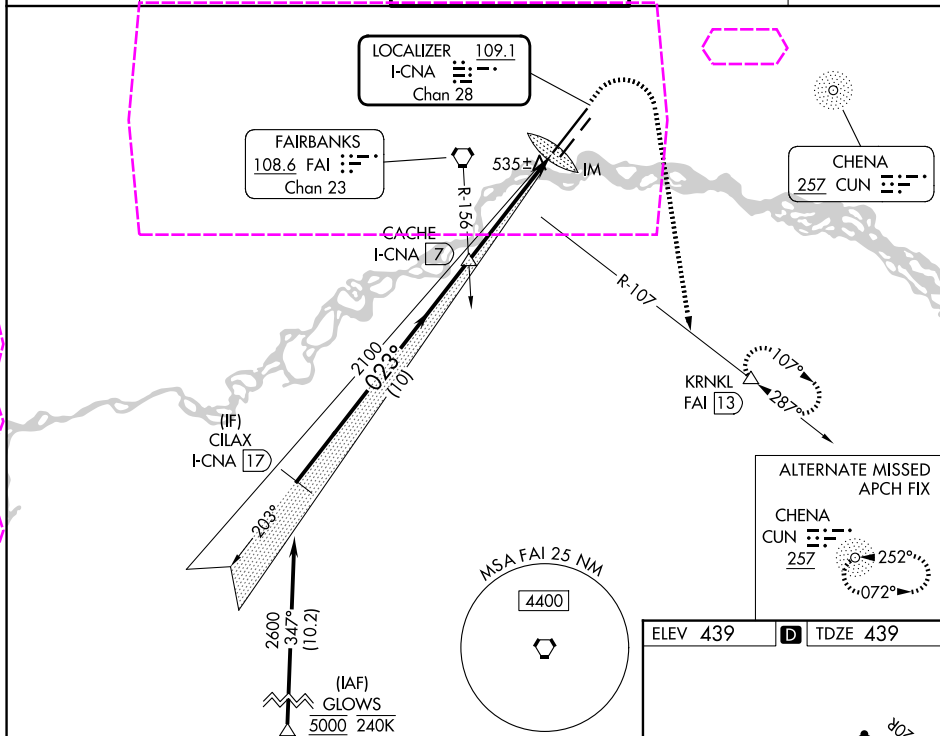
25219

LOC/DME I-CNA <u>109.1</u> Chan 28	APP CRS 023°	Rwy Ldg 11050 TDZE 439 Apt Elev 439
--	-----------------	---

ILS RWY 2L (SA CAT I)
FAIRBANKS INTL (FAI) (PAFA)

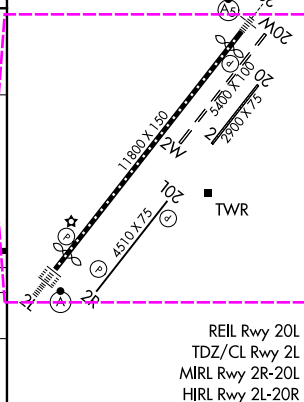
RNP APCH - GPS.	ALSF-2 	MISSED APPROACH: Climb to 900 then climbing right turn to 5000 on heading 170° and FAI VORTAC R-107 to KRNKL/FAI 13 DME and hold, continue climb-in-hold to 5000.
DME required.		
-29°C Requires specific OPSPEC, MSPEC, or LOA approval.		

ATIS 124.4	FAIRBANKS APP CON 125.35 363.2	FAIRBANKS TOWER 118.3 257.8	GND CON 121.9	CLNC DEL 127.6
---------------	-----------------------------------	--------------------------------	------------------	-------------------



CATEGORY	A	B	C	D
S-ILS 2L	RA 139/14 150 DA 589			

SA CATEGORY I ILS - SPECIAL AIRCREW
& AIRCRAFT CERTIFICATION REQUIRED



FAIRBANKS, ALASKA
Amdt 11 05OCT23

64°49'N-147°51'W

FAIRBANKS INTL (FAI) (PAFA)
ILS RWY 2L (SA CAT I)

AK, 07 AUG 2025 to 02 OCT 2025

AK, 07 AUG 2025 to 02 OCT 2025