

FAIRBANKS, ALASKA

AL-1234 (FAA)

25107

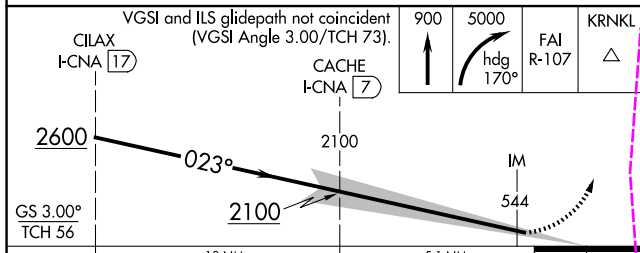
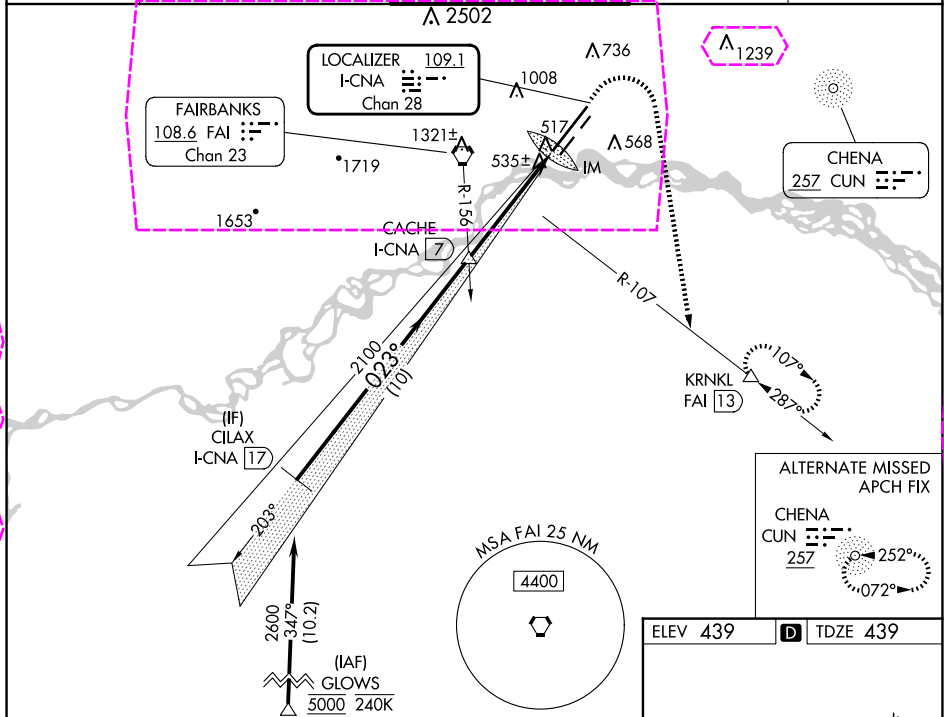
LOC/DME I-CNA	APP CRS	Rwy Idg
<b>109.1</b>	<b>023°</b>	<b>11050</b>
Chan <b>28</b>		TDZE <b>439</b>
		Apt Elev <b>439</b>

# ILS RWY 2L (CAT II & III)

## FAIRBANKS INTL (FAI) (PAFA)

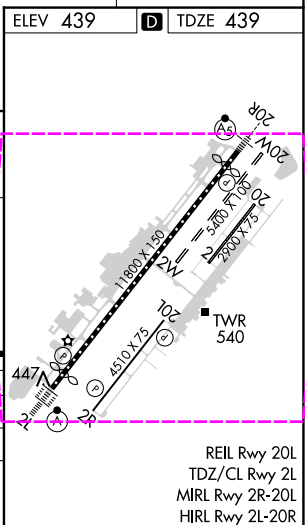
RNP APCH - GPS. DME required.	ALSIF-2 	MISSED APPROACH: Climb to 900 then climbing right turn to 5000 on heading 170° and FAI VORTAC R-107 to KRNL/FAI 13 DME and hold, continue climb-in-hold to 5000.
CAT II: RVR 1000 authorized with specific OPSPEC, MSPEC, or LOA approval and use of autoland or HUD to touchdown. -29°C		

ATIS <b>124.4</b>	FAIRBANKS APP CON <b>125.35 363.2</b>	FAIRBANKS TOWER <b>118.3 257.8</b>	GND CON <b>121.9</b>	CUNC DEL <b>127.6</b>
----------------------	--	---------------------------------------	-------------------------	--------------------------



CATEGORY	A	B	C	D
S-ILS 2L	CAT II RA 104/12 100 DA 539			
S-ILS 2L	CAT III RVR 06			

**CATEGORY II & III ILS - SPECIAL AIRCREW & AIRCRAFT CERTIFICATION REQUIRED**



FAIRBANKS, ALASKA  
Amdt 11 05OCT23

64°49'N-147°51'W

FAIRBANKS INTL (FAI) (PAFA)  
**ILS RWY 2L (CAT II & III)**

AK, 12 JUN 2025 to 07 AUG 2025

AK, 12 JUN 2025 to 07 AUG 2025

FAIRBANKS, ALASKA

AL-1234 (FAA)

25219

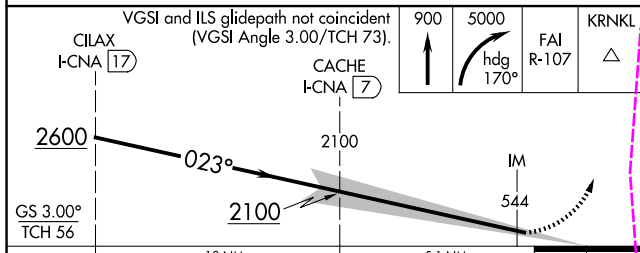
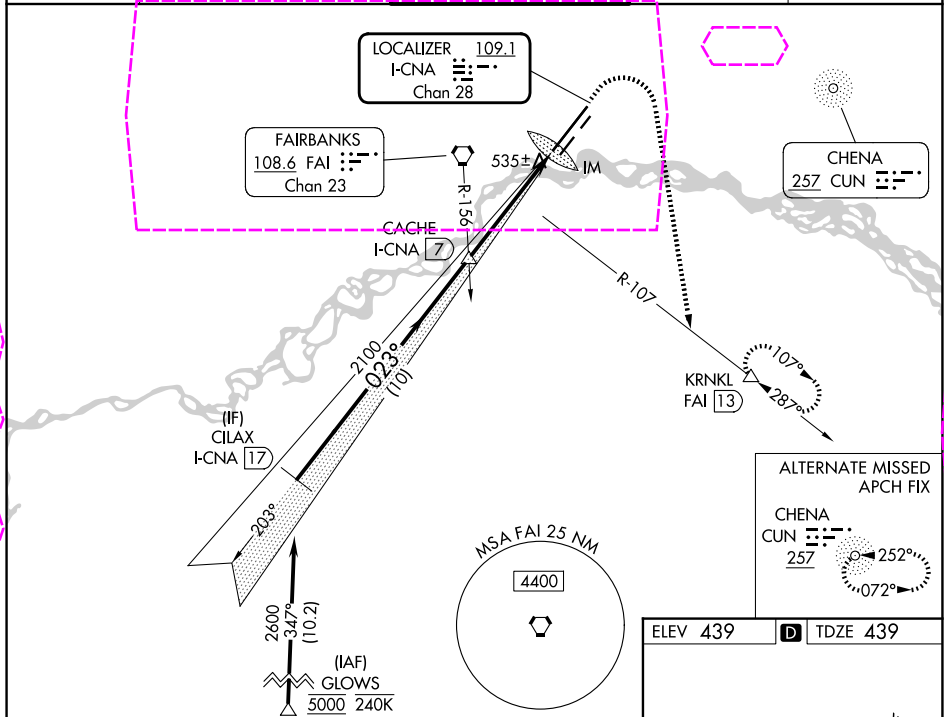
LOC/DME I-CNA <b>109.1</b> Chan <b>28</b>	APP CRS <b>023°</b>	Rwy Ldg <b>11050</b> TDZE <b>439</b> Apt Elev <b>439</b>
---	------------------------	--

# ILS RWY 2L (CAT II & III)

FAIRBANKS INTL (FAI) (PAFA)

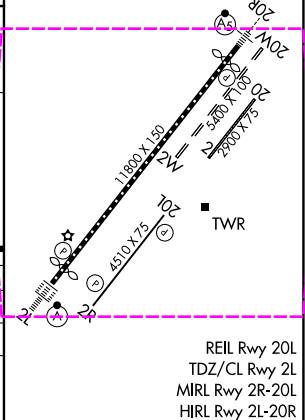
RNP APCH - GPS. DME required.	ALSIF-2 	MISSED APPROACH: Climb to 900 then climbing right turn to 5000 on heading 170° and FAI VORTAC R-107 to KRNL/FAI 13 DME and hold, continue climb-in-hold to 5000.
CAT II: RVR 1000 authorized with specific OPSPEC, MSPEC, or LOA approval and use of autoland or HUD to touchdown. -29°C		

ATIS <b>124.4</b>	FAIRBANKS APP CON <b>125.35 363.2</b>	FAIRBANKS TOWER <b>118.3 257.8</b>	GND CON <b>121.9</b>	CUNC DEL <b>127.6</b>
----------------------	--	---------------------------------------	-------------------------	--------------------------



CATEGORY	A	B	C	D
S-ILS 2L	CAT II RA 104/12 100 DA 539			
S-ILS 2L	CAT III RVR 06			

**CATEGORY II & III ILS - SPECIAL AIRCREW & AIRCRAFT CERTIFICATION REQUIRED**



FAIRBANKS, ALASKA

Amtd 11 05OCT23

64°49'N-147°51'W

FAIRBANKS INTL (FAI) (PAFA)

**ILS RWY 2L (CAT II & III)**