

PITTSBURG, KANSAS

AL-981 (FAA)

25163

WAAS CH 53430 W04A	APP CRS 038°	Rwy Ldg TDZE 946 Apt Elev 946
--	------------------------	---

RNAV (GPS) RWY 4
ATKINSON MUNI (PTS)

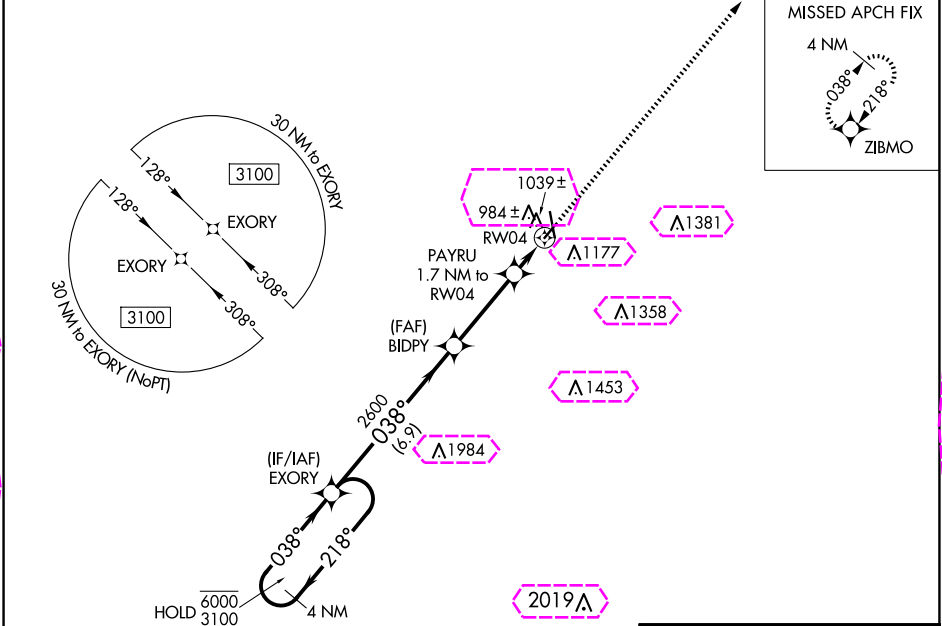
RNP APCH-GPS.

⚠

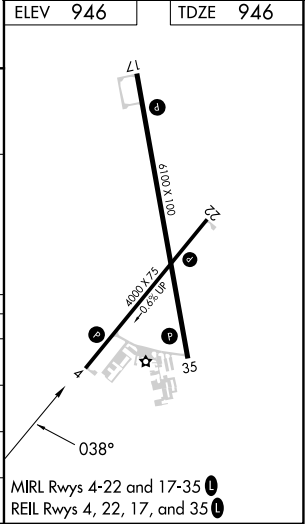
For uncompensated Baro-VNAV systems, LNAV/VNAV NA below -16°C or above 54°C.

MISSED APPROACH: Climb to 3000 direct ZIBMO and hold.

AWOS-3PT 118.775	KANSAS CITY CENTER 128.6 282.325	GCO 121.725	UNICOM 123.0 (CTAF) 0
----------------------------	--	-----------------------	---------------------------------



<div>4 NM Holding Pattern</div> <div>6000 ← 218°</div> <div>3100 → 038°</div> <div>GP 3.00°</div> <div>TCH 37</div>				<div>EXORY</div> <div>BIDPY</div> <div>2600</div> <div>2600</div>				<div>PAYRU</div> <div>1.7 NM to RW04</div> <div>1 NM to RW04</div> <div>RW04</div>				<div>3000</div> <div>↑</div>		<div>ZIBMO</div> <div>✱</div>					
				<div>6.9 NM</div>				<div>3.4 NM</div>				<div>0.7 NM</div>				<div>1 NM</div>			
CATEGORY		A		B		C		D											
LPV DA				1196-1 250 (300-1)				NA											
LNAV/VNAV DA				1196-1 250 (300-1)				NA											
LNAV MDA				1300-1 354 (400-1)				NA											
C CIRCLING				1480-1 534 (600-1)		1520-1½ 574 (600-1½)		NA											



PITTSBURG, KANSAS
Amdt 2 14JUL22

37°27'N-94°44'W

ATKINSON MUNI (PTS)
RNAV (GPS) RWY 4

NC-2, 07 AUG 2025 to 04 SEP 2025