

PITTSBURG, KANSAS

AL-981 (FAA)

25163

WAAS CH <b>77600</b> <b>W35A</b>	APP CRS <b>348°</b>	Rwy Ldg TDZE <b>929</b> Apt Elev <b>946</b>
--	------------------------	---

RNAV (GPS) RWY 35

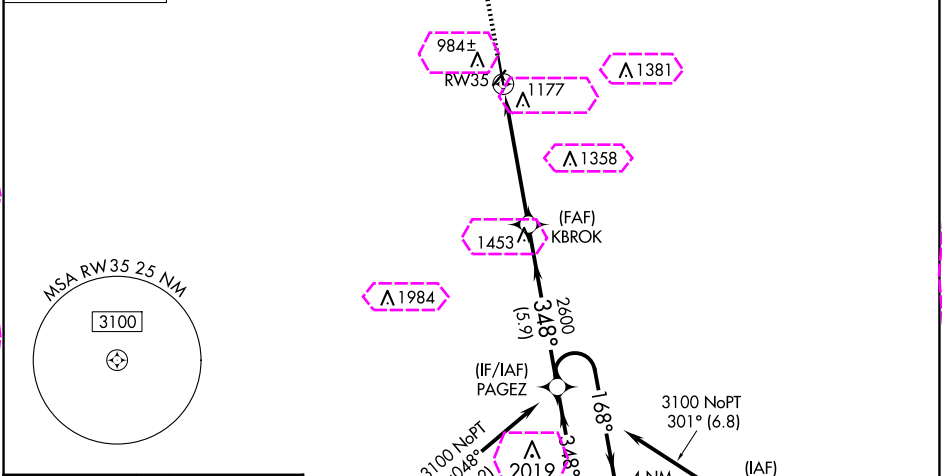
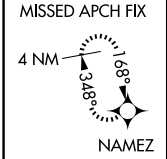
ATKINSON MUNI (PTS)

⚠

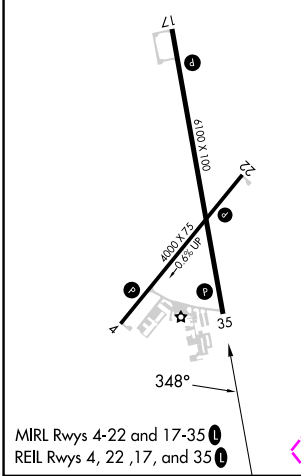
For uncompensated Baro-VNAV systems, LNAV/VNAV NA below -16°C (4°F) or above 54°C (130°F). Rwy 35 helicopter visibility reduction below ¾ SM NA. DME/DME RNP-0.3 NA.

MISSED APPROACH: Climb to 3000 direct NAMEZ and hold.

AWOS-3PT <b>118.775</b>	KANSAS CITY CENTER <b>128.6 282.325</b>	GCO <b>121.725</b>	UNICOM <b>123.0 (CTAF) 0</b>
----------------------------	--	-----------------------	---------------------------------



ELEV 946	TDZE 929
----------	----------



VGSI and RNAV glidepath not coincident (VGSI Angle 3.00/TCH 20).				4 NM Holding Pattern
CATEGORY	A	B	C	D
LPV DA	1179-1 250 (300-1)			
LNAV/VNAV DA	1338-1½ 409 (400-1½)			
LNAV MDA	1440-1	511 (500-1)	1440-1¾	511 (500-1¾)
<div>CIRCLING</div>	1480-1	534 (600-1)	1520-1½	1720-2½
			574 (600-1½)	774 (800-2½)

NC-2, 10 JUL 2025 to 07 AUG 2025

NC-2, 10 JUL 2025 to 07 AUG 2025

PITTSBURG, KANSAS

Amd 3 01FEB18

37°27'N-94°44'W

ATKINSON MUNI (PTS)

RNAV (GPS) RWY 35

PITTSBURG, KANSAS

AL-981 (FAA)

25219

WAAS CH <b>77600</b> <b>W35A</b>	APP CRS <b>348°</b>	Rwy Ldg TDZE <b>929</b> Apt Elev <b>946</b>
--	------------------------	---

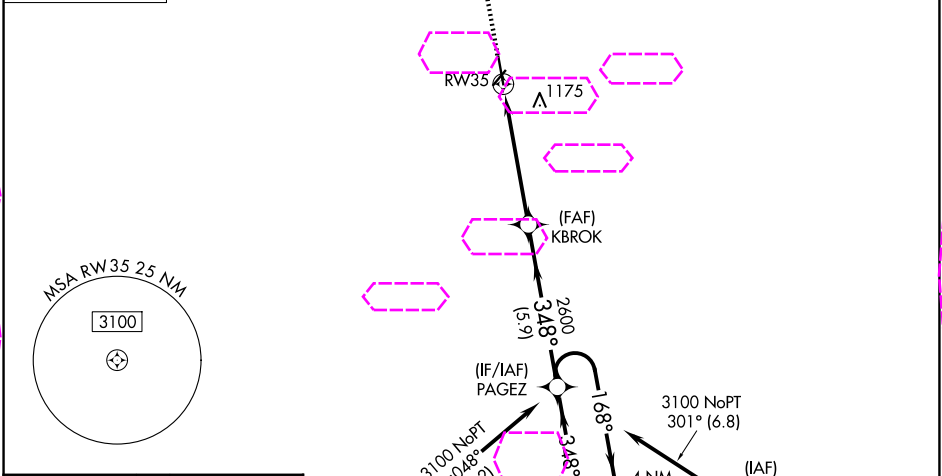
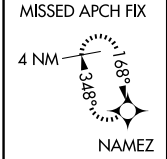
# RNAV (GPS) RWY 35

ATKINSON MUNI (PTS)

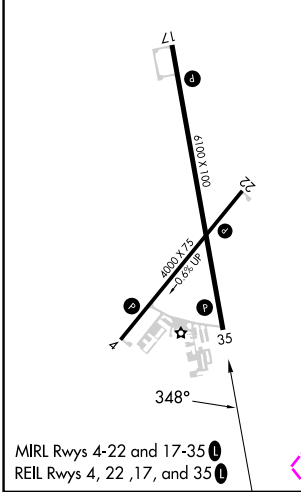
**⚠** For uncompensated Baro-VNAV systems, LNAV/VNAV NA below -16°C (4°F) or above 54°C (130°F). Rwy 35 helicopter visibility reduction below ¾ SM NA. DME/DME RNP-0.3 NA.

MISSED APPROACH: Climb to 3000 direct NAMEZ and hold.

AWOS-3PT <b>118,775</b>	KANSAS CITY CENTER <b>128.6 282,325</b>	UNICOM <b>123.0 (CTAF) 0</b>
----------------------------	--	---------------------------------



ELEV <b>946</b>	TDZE <b>929</b>
-----------------	-----------------



3000	NAMEZ	VGSI and RNAV glidepath not coincident (VGSI Angle 3.00/TCH 20).		4 NM
		PAGEZ Holding Pattern		
*LNAV only.				
KBROK 2600				
RW35 2600				
1.5 NM to RW35				
1.5 NM 3.6 NM 5.9 NM				
CATEGORY	A	B	C	D
LPV DA	1179-1 250 (300-1)			
LNAV/VNAV DA	1338-1½ 409 (400-1½)			
LNAV MDA	1440-1 511 (500-1)		1440-1¾ 511 (500-1¾)	
CIRCLING	1480-1 534 (600-1)		1520-1½ 1720-2½ 574 (600-1½) 774 (800-2½)	

PITTSBURG, KANSAS

Amtd 3 01FEB18

37°27'N-94°44'W

ATKINSON MUNI (PTS)

# RNAV (GPS) RWY 35

NC-2, 07 AUG 2025 to 04 SEP 2025

NC-2, 07 AUG 2025 to 04 SEP 2025