

NC-2, 10 JUL 2025 to 07 AUG 2025

PITTSBURG, KANSAS

AL-981 (FAA)

25219

| | | | |
|--|------------------------|-----------------------------|---|
| WAAS CH 61130 W17A | APP CRS 168° | Rwy Ldg TDZE Apt Elev | 6100 936 946 |
|--|------------------------|-----------------------------|---|

RNAV (GPS) RWY 17

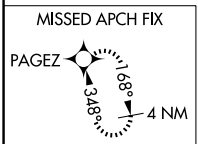
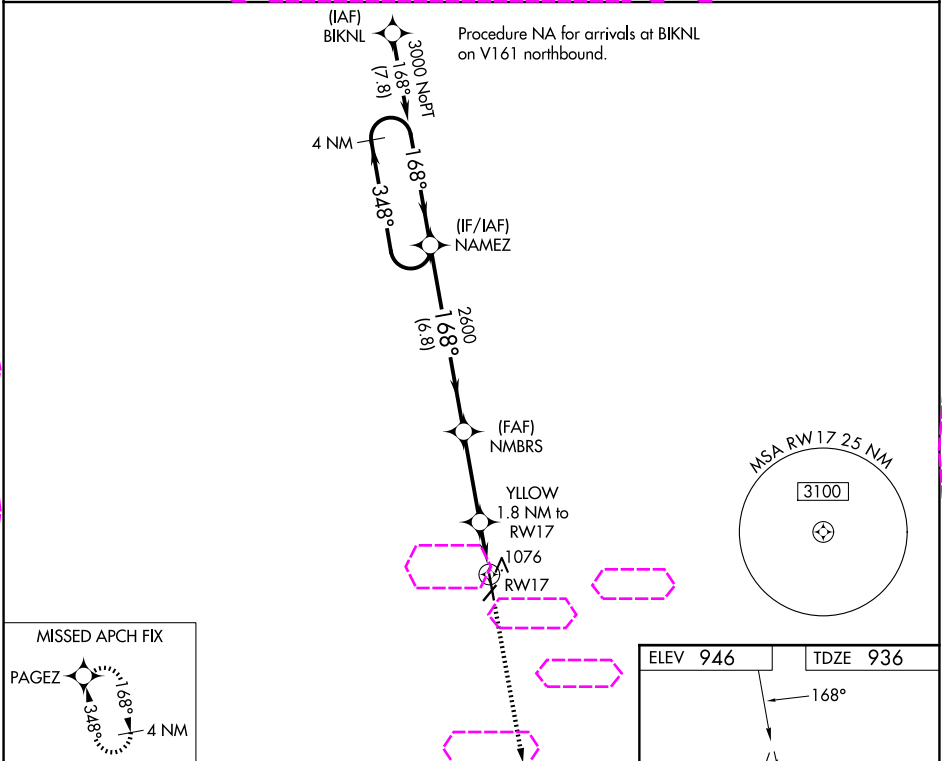
ATKINSON MUNI (PTS)

▼
▲

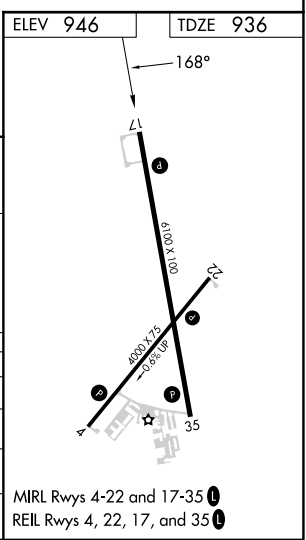
For uncompensated Baro-VNAV systems, LNAV/VNAV NA below -16°C (4°F) or above 54°C (130°F). DME/DME RNP-0.3 NA. Rwy 17 helicopter visibility reduction below ¾ SM NA.

MISSED APPROACH: Climb to 3100 direct PAGEZ and hold.

| | | |
|----------------------------|--|---------------------------------|
| AWOS-3PT 118.775 | KANSAS CITY CENTER 128.6 282.325 | UNICOM 123.0 (CTAF) 0 |
|----------------------------|--|---------------------------------|



| | | | | | | |
|----------------------|--------|-------------|-------------|-------------------------|--------|-------|
| 4 NM Holding Pattern | | NAMEZ | NMBRS | YELLOW 1.8 NM to RWY 17 | 3100 | PAGEZ |
| 3000 | | 168° | 2600 | *1.1 NM to RWY 17 | | |
| GP 3.00° TCH 40 | | 2600 | *1540 | | | |
| | | 6.8 NM | 3.3 NM | 0.7 NM | 1.1 NM | |
| CATEGORY | A | B | C | D | | |
| LPV DA | 1216-1 | | 280 (300-1) | | | |
| LNAV/VNAV DA | 1237-1 | | 301 (300-1) | | | |
| LNAV MDA | 1340-1 | 404 (400-1) | 1340-1½ | 404 (400-1½) | | |
| CIRCLING | 1480-1 | 534 (600-1) | 1520-1½ | 774 (800-2½) | | |



PITTSBURG, KANSAS
Amdt 3A 01MAR18

37°27'N-94°44'W

ATKINSON MUNI (PTS)
RNAV (GPS) RWY 17

NC-2, 07 AUG 2025 to 04 SEP 2025

NC-2, 07 AUG 2025 to 04 SEP 2025

MIRL Rwy 4-22 and 17-35
REIL Rwy 4, 22, 17, and 35