

WAAS CH 62820 W05A	APP CRS 049°	Rwy Idg 5000 TDZE 48 Apt Elev 53
--	------------------------	---

RNAV (GPS) RWY 5


SALISBURY-OCEAN CITY WICOMICO RGNL (SBY)

RNP APCH.

T Baro-VNAV NA when using Georgetown altimeter setting. For uncompensated Baro-VNAV systems, LNAV/VNAV NA below -15°C or above 49°C. Visibility reduction by helicopters **A** NA. When local altimeter setting not received use Georgetown altimeter setting: increase LP DA to 394 feet and increase all Cats visibility ¼ SM; increase LNAV/VNAV DA to 512 feet and all Cats visibility ¼ SM; increase all MDA 60 feet and LNAV Cat C/D and Circling Cat D visibility ¼ SM.

MISSED APPROACH: Climb to 2000
direct OKKOE and hold.

ASOS	PATUXENT APP CON★
118.325	127.95 314.0

SALISBURY TOWER ★
119.425 (CTAF) 

GND CON
123.775

CLNC DEL
123.775

CLNC DEL
132.45
(when twr closed)

UNICOM
122.95

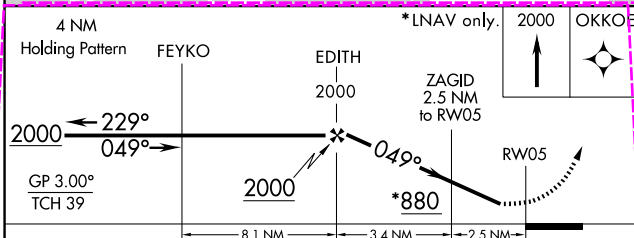
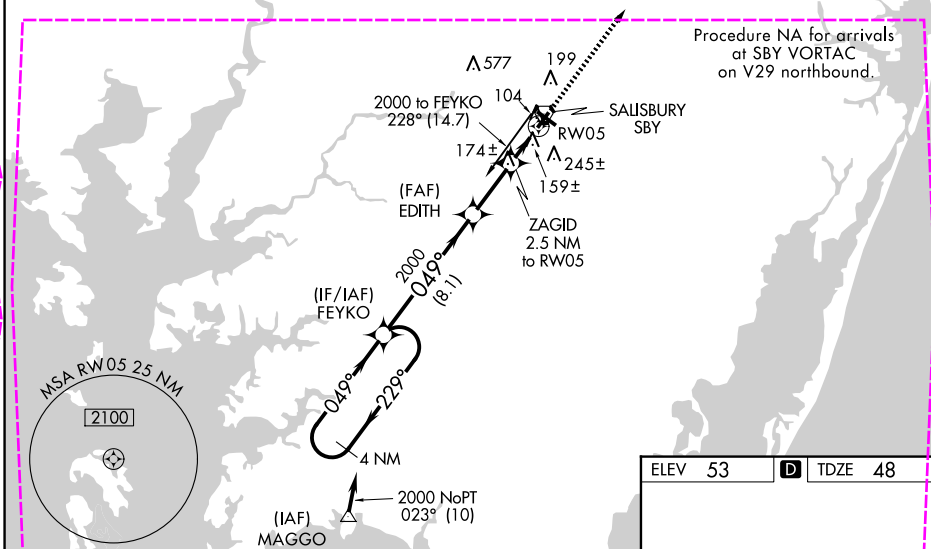
Δ 1048



Procedure NA for arrivals at SBY VORTAC on V29 northbound.

NE-3, 10 JUL 2025 to 07 AUG 2025

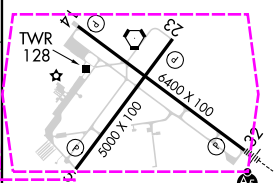
NE-3, 10 JUL 2025 to 07 AUG 2025



ELEV 53	D	TDZE 48
---------	----------	---------

33	10
----	----

CATEGORY		A	B	C	D
LPV	DA	342-1 294 (300-1)			
LNAV/ VNAV	DA	460-1½ 412 (500-1½)			
LNAV	MDA	440-1 392 (400-1)			440-1¼ 392 (400-1¼)
CIRCLING		480-1 427 (500-1)	520-1 467 (500-1)	560-1½ 507 (600-1½)	700-2 647 (700-2)



REIL Rwys 5, 14 and 23 **L**
MIRL Rwy 5-23 **L**
HIRL Rwy 14-32 **L**

SALISBURY, MARYLAND

Amdt 1A 25MAR21

SAUSBIJRY-OCEAN CITY WICOMICO BGNL (SBY)

38°20'N-75°31'W

RNAV (GPS) RWY 5

WAAS CH 62820 W05A	APP CRS 049°	Rwy Ldg 5000 TDZE 47 Apt Elev 53
--	------------------------	---

RNAV (GPS) RWY 5

SALISBURY-OCEAN CITY WICOMICO RGNL (SBY)

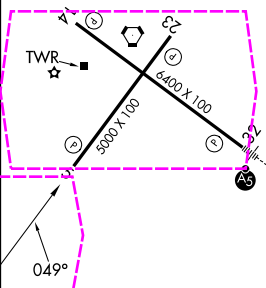
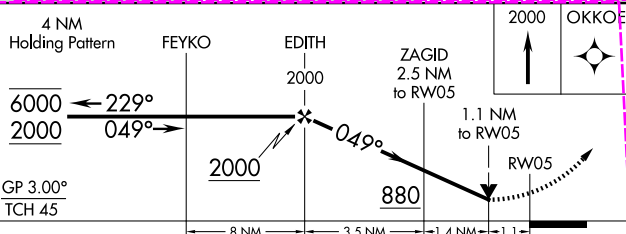
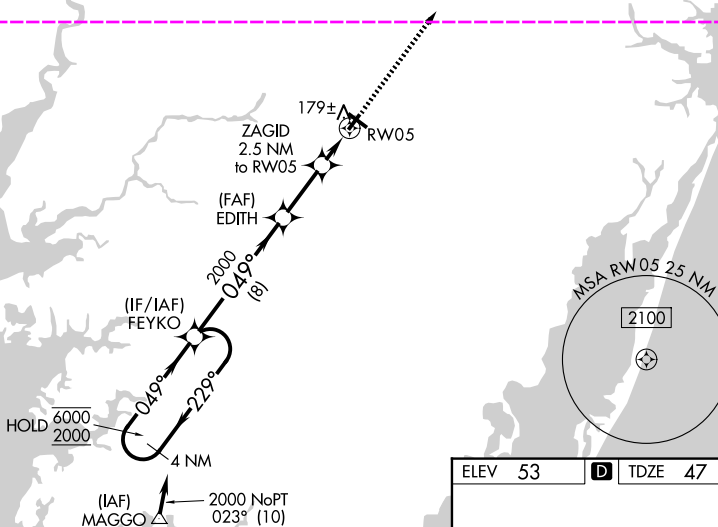
RNP APCH - GPS.



For uncompensated Baro-VNAV systems, LNAV/VNAV NA below -9°C or above 54°C. Rwy 5 helicopter visibility reduction below $\frac{3}{4}$ SM NA.

MISSED APPROACH: Climb to 2000 direct OKKOE and hold.

ASOS	PATUXENT APP CON★	SALISBURY TOWER★	GND CON	CLNC DEL	CLNC DEL	UNICOM
118.325	127.95 314.0	119.425 (CTAF) 0	123.775	123.775	132.45 (When twr closed)	122.95



CATEGORY	A	B	C	D
LPV DA	345-7 $\frac{7}{8}$		298 (300-7 $\frac{7}{8}$)	
LNAV/ VNAV DA	460-1 $\frac{1}{8}$		413 (500-1 $\frac{1}{8}$)	
LNAV MDA	440-1	393 (400-1)	440-1 $\frac{1}{8}$	393 (400-1 $\frac{1}{8}$)
CIRCLING	480-1 427 (500-1)	520-1 467 (500-1)	560-1 $\frac{1}{2}$ 507 (600-1 $\frac{1}{2}$)	700-2 647 (700-2)

REIL Rwy 5, 14 and 23 **L**
MIRL Rwy 5-23 **L**
HIRL Rwy 14-32 **L**

SALISBURY, MARYLAND
Amdt 2 07AUG25

SALISBURY-OCEAN CITY WICOMICO RGNL (SBY)
38°20'N-75°31'W PNAV (GPS) RWY 5

RNAV (GPS) RWY 5

NE-3, 07 AUG 2025 to 04 SEP 2025