

SALISBURY, MARYLAND


AL-977 (FAA)

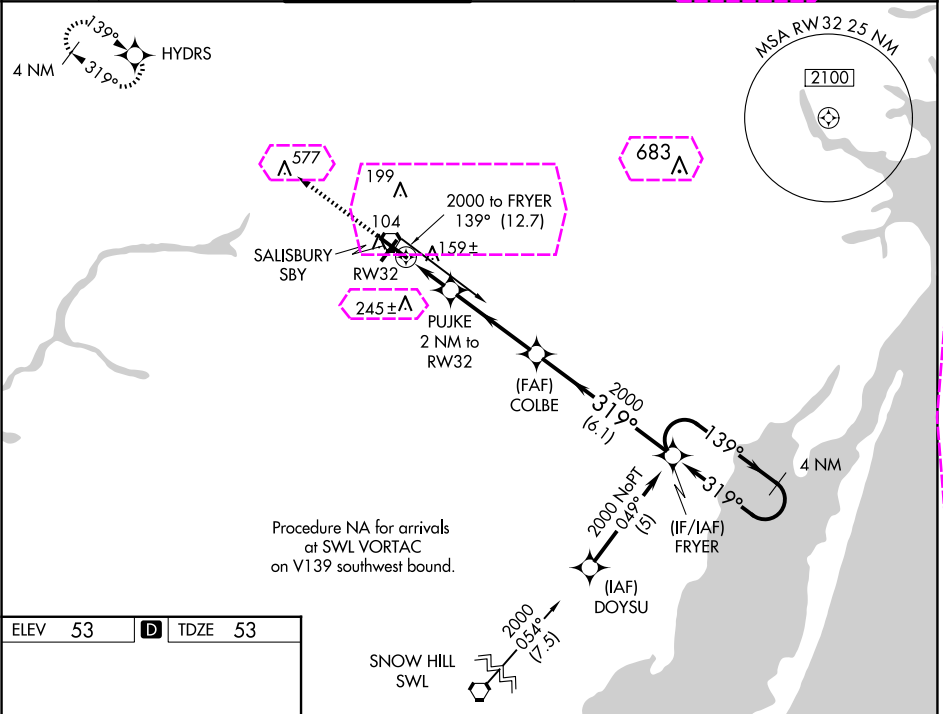
25107

WAAS CH 48912 W32A	APP CRS 319°	Rwy Idg 6400 TDZE 53 Apt Elev 53
--	------------------------	---

RNAV (GPS) RWY 32

SALISBURY-OCEAN CITY WICOMICO RGNL (SBY)

RNP APCH.					MALSR		MISSED APPROACH: Climb to 2100 direct HYDRS and hold.
▼ For uncompensated Baro-VNAV systems, LNAV/VNAV NA below -15°C or above 49°C. When local altimeter setting not received use Georgetown altimeter setting: increase LPV DA to 305 feet; increase LNAV/VNAV DA to 510; increase all MDA 60 feet and LNAV Cat C and Circling Cat D visibility ¼ SM. For inoperative MALSR, increase LNAV Cat D visibility to 1 ¼ SM. VDP and Baro-VNAV NA when using Georgetown altimeter setting.							
ASOS	PATUXENT APP CON★	SALISBURY TOWER★	GND CON	CLNC DEL	CLNC DEL	UNICOM	
118.325	127.95 314.0	119.425 (CTAF) 0	123.775	123.775	132.45 (when twr closed)	122.95	



ELEV 53	D	TDZE 53
---------	----------	---------

REIL Rwy 5, 14 and 23 MIRL Rwy 5-23 HIRL Rwy 14-32				
2100 HYDRS *LNAV only				
COLBE FRYER 4 NM Holding Pattern				
PUJKE 2 NM to RW32				
RW32 1 NM 1 NM 3.9 NM 6.1 NM				
*1 NM to RW32 *740				
RW32 1 NM 1 NM 3.9 NM 6.1 NM				
CATEGORY	A	B	C	D
LPV DA	253-½		200 (200-½)	
LNAV/VNAV DA	458-1		405 (500-1)	
LNAV MDA	420-½		367 (400-½)	
CIRCLING	480-1 427 (500-1)	520-1 467 (500-1)	560-1½ 507 (600-1½)	700-2 647 (700-2)

SALISBURY, MARYLAND

Amdt 2A 25MAR21

SALISBURY-OCEAN CITY WICOMICO RGNL (SBY)

38°20'N-75°31'W

RNAV (GPS) RWY 32

NE-3, 10 JUL 2025 to 07 AUG 2025

NE-3, 10 JUL 2025 to 07 AUG 2025

SALISBURY, MARYLAND

AL-977 (FAA)

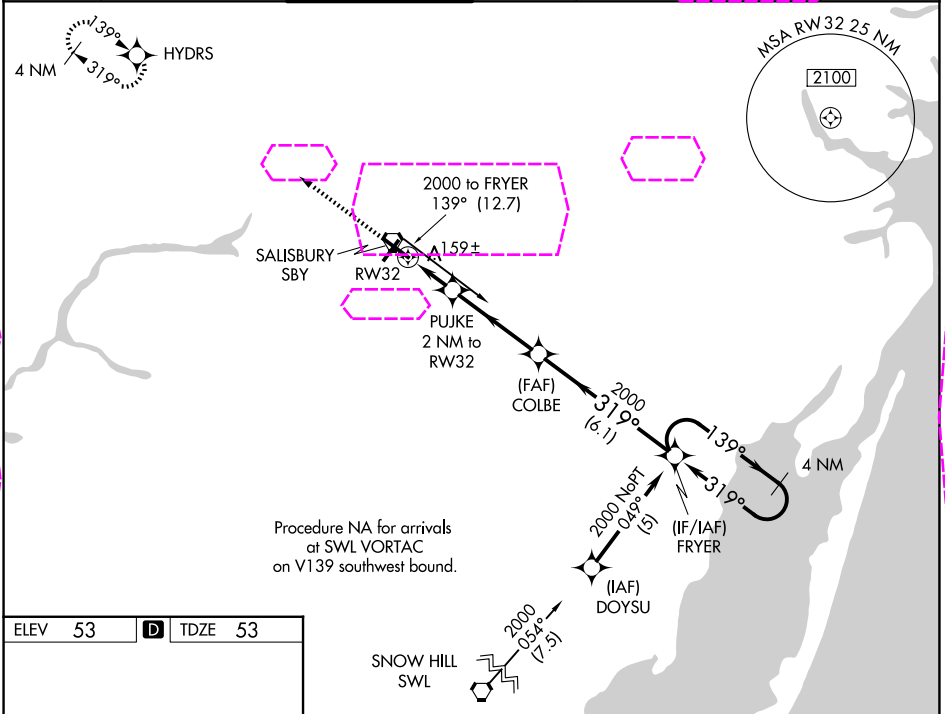
25219

WAAS CH 48912 W32A	APP CRS 319°	Rwy Ldg 6400 TDZE 53 Apt Elev 53
--	------------------------	---

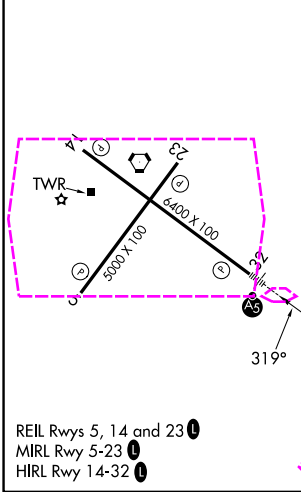
RNAV (GPS) RWY 32

SALISBURY-OCEAN CITY WICOMICO RGNL (SBY)

RNP APCH. For uncompensated Baro-VNAV systems, LNAV/VNAV NA below -15°C or above 49°C. When local altimeter setting not received use Georgetown altimeter setting: increase LPV DA to 305 feet; increase LNAV/VNAV DA to 510; increase all MDA 60 feet and LNAV Cat C and Circling Cat D visibility ¼ SM. For inoperative MALSRR, increase LNAV Cat D visibility to 1¼ SM. VDP and Baro-VNAV NA when using Georgetown altimeter setting.					MALSRR 	MISSED APPROACH: Climb to 2100 direct HYDRS and hold.
ASOS 118.325	PATUXENT APP CON★ 127.95 314.0	SALISBURY TOWER★ 119.425 (CTAF) 0	GND CON 123.775	CLNC DEL 123.775	CLNC DEL 132.45 (When twr closed)	UNICOM 122.95



ELEV 53	D	TDZE 53
---------	----------	---------



2100 HYDRS *LNAV only				
CATEGORY	A	B	C	D
LPV DA	253-½		200 (200-½)	
LNAV/VNAV DA	458-1		405 (500-1)	
LNAV MDA	420-½		367 (400-½)	
CIRCLING	480-1 427 (500-1)	520-1 467 (500-1)	560-1½ 507 (600-1½)	700-2 647 (700-2)

SALISBURY, MARYLAND
Amdt 2A 25MAR21

SALISBURY-OCEAN CITY WICOMICO RGNL (SBY)
38°20'N-75°31'W
RNAV (GPS) RWY 32

NE-3, 07 AUG 2025 to 04 SEP 2025

NE-3, 07 AUG 2025 to 04 SEP 2025