

SALISBURY, MARYLAND

AL-977 (FAA)

25107

WAAS CH 78018 W23A	APP CRS 229°	Rwy Idg TDZE Apt Elev	5000 49 53
--	------------------------	-----------------------------	---------------------------------------

RNAV (GPS) RWY 23

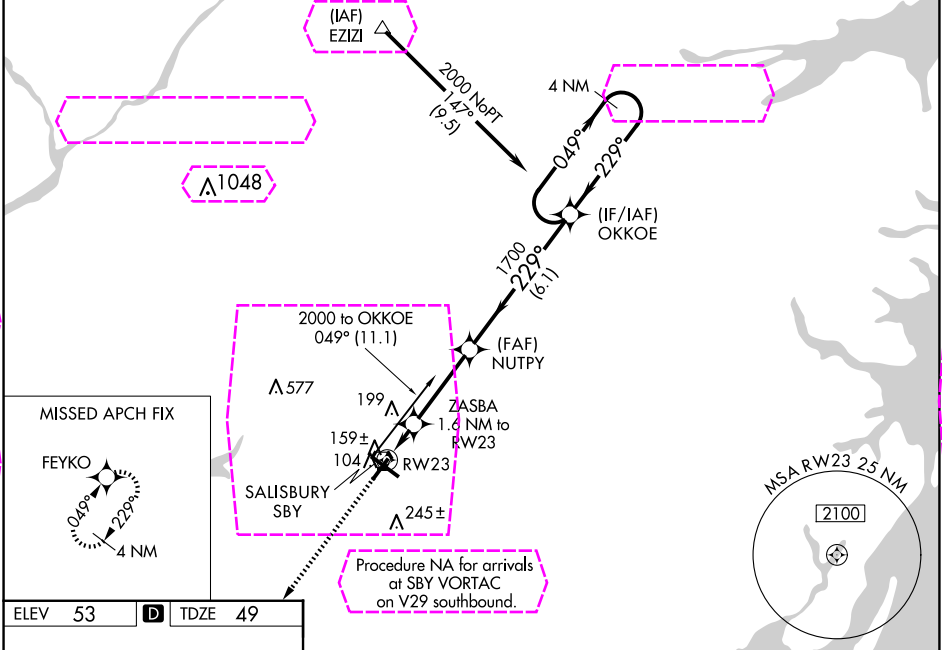
SALISBURY-OCEAN CITY WICOMICO RGNL (SBY)

RNP APCH

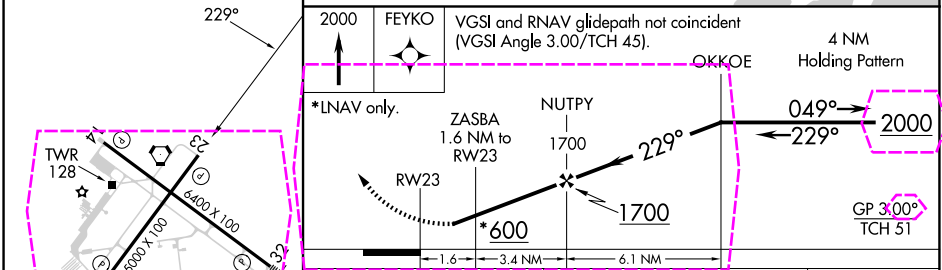
- Baro-VNAV NA when using Georgetown altimeter setting. For uncompensated Baro-VNAV systems, LNAV/VNAV NA below -15°C or above 43°C. Rwy 23 helicopter visibility reduction below 3/4 SM NA.
- When local altimeter setting not received use Georgetown altimeter setting: increase LPV DA to 426 feet and all Cats visibility 1/4 SM; increase LNAV/VNAV DA to 503 feet; increase all MDA 60 feet and LNAV Cat C/D and Circling Cat D visibility 1/4 SM.

MISSED APPROACH:
Climb to 2000 direct
FEYKO and hold.

ASOS 118.325	PATUXENT APP CON ★ 127.95 314.0	SALISBURY TOWER ★ 119.425 (CTAF) 0	GND CON 123.775	CLNC DEL 123.775	CLNC DEL 132.45 (when twr closed)	UNICOM 122.95
------------------------	---	---	---------------------------	----------------------------	--	-------------------------



ELEV 53	D	TDZE 49
---------	----------	---------



CATEGORY	A	B	C	D
LPV DA		374-1	325 (400-1)	
LNAV/VNAV DA		451-1 1/2	402 (400-1 1/2)	
LNAV MDA		420-1	371 (400-1)	420-1 1/4 371 (400-1 1/4)
CIRCLING	480-1 427 (500-1)	520-1 467 (500-1)	560-1 1/2 507 (600-1 1/2)	700-2 647 (700-2)

REIL Rwy 5, 14 and 23 **0**
MIRL Rwy 5-23 **0**
HIRL Rwy 14-32 **0**

SALISBURY, MARYLAND

Amdt **1B** 25MAR21

SALISBURY-OCEAN CITY WICOMICO RGNL (SBY)

38°20'N-75°31'W

RNAV (GPS) RWY 23

NE-3, 10 JUL 2025 to 07 AUG 2025

NE-3, 10 JUL 2025 to 07 AUG 2025

SALISBURY, MARYLAND

AL-977 (FAA)

25219

WAAS CH 78018 W23A	APP CRS 229°	Rwy Ldg TDZE Apt Elev	5000 49 53
--	------------------------	-----------------------------	---------------------------------------

RNAV (GPS) RWY 23

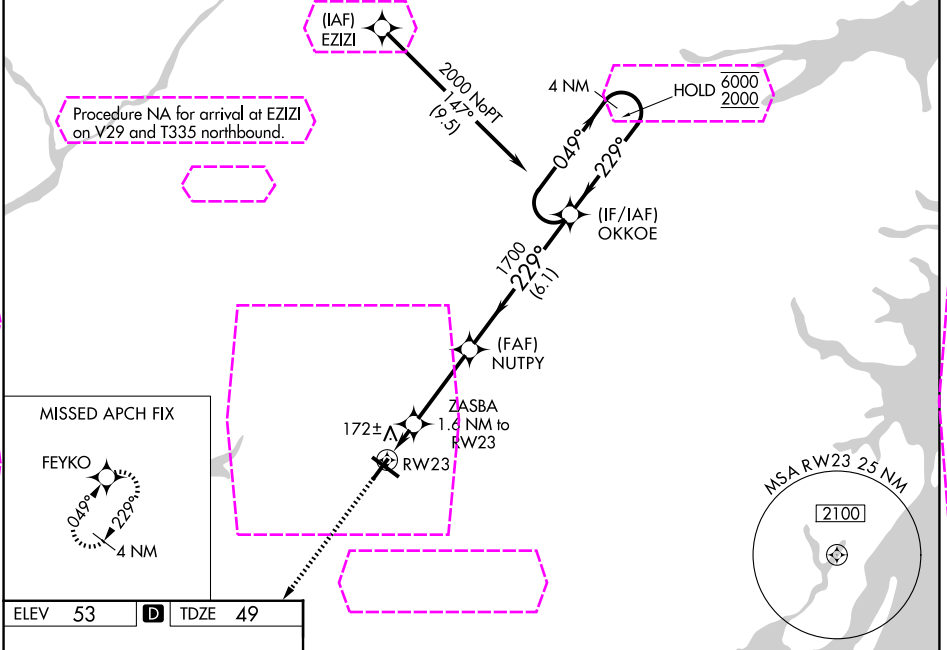
SALISBURY-OCEAN CITY WICOMICO RGNL (SBY)

RNP APCH - GPS.

▼
▲ Rwy 23 helicopter visibility reduction below $\frac{3}{4}$ SM NA. For uncompensated Baro-VNAV systems, LNAV/VNAV NA below -9°C or above 54°C.

MISSED APPROACH:
Climb to 2000 direct
FEYKO and hold.

ASOS 118.325	PATUXENT APP CON ★ 127.95 314.0	SALISBURY TOWER ★ 119.425 (CTAF) 0	GND CON 123.775	CLNC DEL 123.775	CLNC DEL 132.45 (When twr closed)	UNICOM 122.95
------------------------	---	---	---------------------------	----------------------------	--	-------------------------



ELEV 53	D	TDZE 49
---------	----------	---------

229°

2000

FEYKO

VGSI and RNAV glidepath not coincident (VGSI Angle 3.00/TCH 45).

OKKOE

4 NM Holding Pattern

049° 6000 229° 2000

GP 3.04° TCH 51

1700

600

1.1 NM to RW23

ZASBA 1.6 NM to RW23

NUTPY

1.1 NM 0.5 3.4 NM 6.1 NM

CATEGORY	A	B	C	D
LPV DA	374-1 325 (400-1)			
LNAV/VNAV DA	451-1 $\frac{1}{8}$ 402 (400- $\frac{1}{8}$)			
LNAV MDA	440-1	391 (400-1)	440-1 $\frac{1}{8}$	391 (400- $\frac{1}{8}$)
CIRCLING	480-1 427 (500-1)	520-1 467 (500-1)	560-1 $\frac{1}{2}$ 507 (600- $\frac{1}{2}$)	700-2 647 (700-2)

REIL Rwy 5, 14 and 23 **0**
MIRL Rwy 5-23 **0**
HIRL Rwy 14-32 **0**

SALISBURY, MARYLAND

Amdt 1C 07AUG25

SALISBURY-OCEAN CITY WICOMICO RGNL (SBY)

38°20'N-75°31'W

RNAV (GPS) RWY 23

NE-3, 07 AUG 2025 to 04 SEP 2025

NE-3, 07 AUG 2025 to 04 SEP 2025