

SALISBURY, MARYLAND

AL-977 (FAA)

25107

WAAS CH 56320 W14A	APP CRS 139°	Rwy Idg TDZE Apt Elev	6400 49 53
--	------------------------	-----------------------------	---------------------------------------

RNAV (GPS) RWY 14

SALISBURY-OCEAN CITY WICOMICO RGNL (SBY)

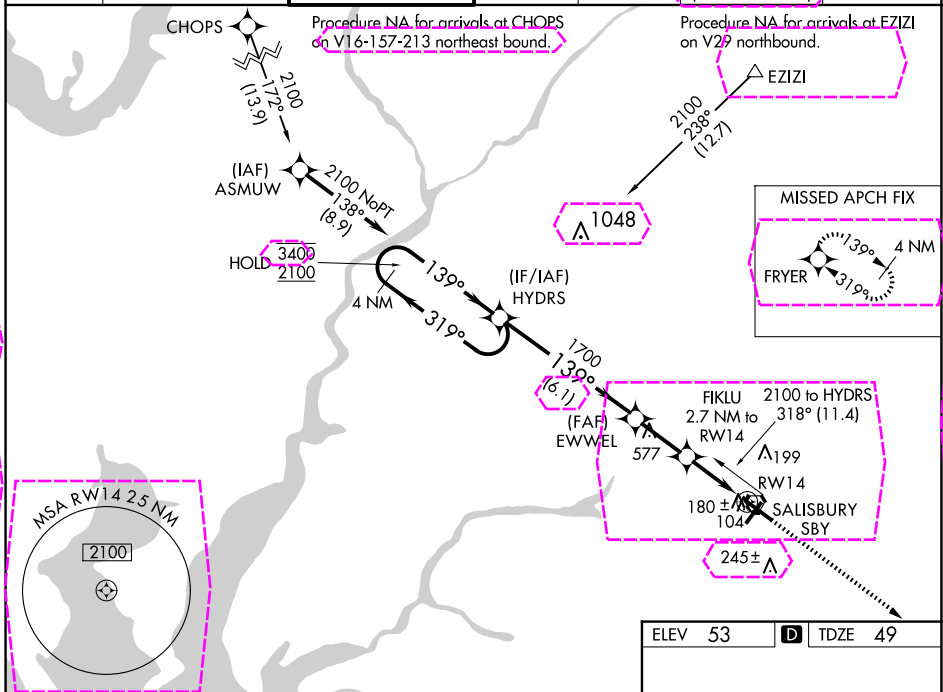
RNP APCH.



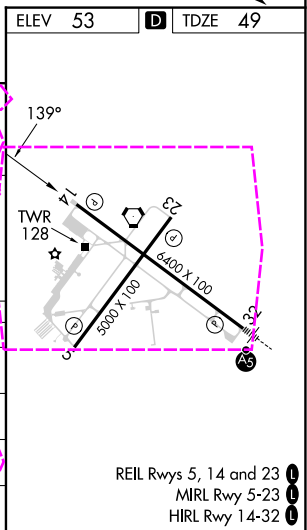
Rwy 14 helicopter visibility reduction below $\frac{3}{4}$ SM NA.
For uncompensated Baro-VNAV systems, LNAV/VNAV NA below -16° C or above 54° C.

MISSED APPROACH:
Climb to 2000 direct
FRYER and hold.

ASOS 118.325	PATUXENT APP CON ★ 127.95 314.0	SALISBURY TOWER ★ 119.425 (CTAF) 0	GND CON 123.775	CLNC DEL 123.775	CLNC DEL 132.45 (when twr closed)	UNICOM 122.95
------------------------	---	---	---------------------------	----------------------------	--	-------------------------



4 NM Holding Pattern		HYDRS		EWWEL		FIKLU 2.7 NM to RW14		2000 FRYER	
3400 ← 319°		2100 → 139°		1700		*1.1 NM to RW14		*LNAV only	
GP 3.00°		TCH 45		1700		RW14		245±	
← 6.1 NM		← 2.3 NM		← 1.6 NM		← 1.1 NM			
CATEGORY		A		B		C		D	
LPV DA						363-1	314 (400-1)		
LNAV/VNAV DA						453-1½	404 (400-1½)		
LNAV MDA		440-1	391 (400-1)			440-1½	391 (400-1½)	440-1¼	391 (400-1¼)
CIRCLING		480-1	427 (500-1)	520-1	467 (500-1)	560-1½	507 (600-1½)	700-2	647 (700-2)



SALISBURY, MARYLAND
Amtd 1B 30JAN20

SALISBURY-OCEAN CITY WICOMICO RGNL (SBY)
38°20'N-75°31'W
RNAV (GPS) RWY 14

REIL Rwy 5, 14 and 23
MIRL Rwy 5-23
HIRL Rwy 14-32

WAAS CH 56320 W14A	APP CRS 139°	Rwy Ldg TDZE Apt Elev	6400 49 53
--	------------------------	-----------------------------	---------------------------------------

RNAV (GPS) RWY 14

SALISBURY-OCEAN CITY WICOMICO RGNL (SBY)

RNP APCH - GPS.

T Rwy 14 helicopter visibility reduction below $\frac{3}{4}$ SM NA. For uncompensated Baro-VNAV
A systems. LNAV/VNAV NA below -9° C or above 54° C.

MISSED APPROACH:
Climb to 2000 direct
BEEEG and hold.

ASOS	PATUXENT APP CON ★	SALISBURY TOWER ★	GND CON	CLNC DEL	CLNC DEL	UNICOM
118.325	127.95 314.0	119.425 (CTAF) 0	123.775	123.775	132.45 (When twr closed)	122.95

CHOPS Procedure NA for arrivals at CHOPS on T224-315 northeast bound.

Procedure NA for arrivals at E7IZI
on V29 and T335 northbound. !

Procedure NA for arrivals at CHOPS on T224-315 northeast bound.

Procedure NA for arrivals at EZIZI on V29 and T335 northbound.

PS 170° (13.9)

(IAF) ASMUW 210° (8.9)

EZIZI 238° (12.7)

MISSED APCH FIX

NE-3, 07 AUG 2025 to 04 SEP 2025

CATEGORY		A	B	C	D
LPV	DA	299-3 $\frac{3}{4}$ 250 (300-3 $\frac{3}{4}$)			
LNAV/ VNAV	DA	436-1 $\frac{1}{8}$ 387 (400-1 $\frac{1}{8}$)			
LNAV	MDA	440-1 391 (400-1)		440-1 $\frac{1}{8}$ 391 (400-1 $\frac{1}{8}$)	
CIRCLING		480-1 427 (500-1)	520-1 467 (500-1)	560-1 $\frac{1}{2}$ 507 (600-1 $\frac{1}{2}$)	700-2 647 (700-2)

REIL Rwys 5, 14 and 23
MRL Rwy 5-23
HIRL Rwy 14-32

SALISBURY, MARYLAND
Amdt 2 07AUG25

SALISBURY-OCEAN CITY WICOMICO RGNL (SBY)
75°31'W **RNAV (GPS) RWY 14**

38°20'N-75°31'W