

FORT DODGE, IOWA

AL-976 (FAA)

21140

WAAS CH 61015 W06A	APP CRS 063°	Rwy Idg TDZE 1107 Apt Elev 1156
--	------------------------	---

RNAV (GPS) RWY 6

FORT DODGE RGNL (FOD)

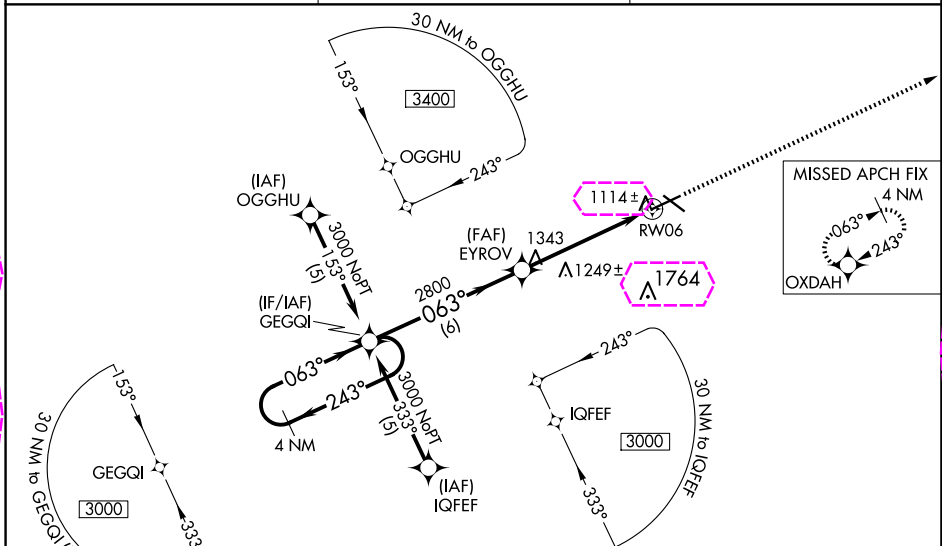
RNP APCH.

⚠ Baro-VNAV NA when using Webster City altimeter setting. For uncompensated Baro-VNAV systems, LNAV/VNAV NA below -17°C or above 54°C. VDP NA when using Webster City altimeter setting. When local altimeter setting not received, use Webster City altimeter setting: increase LPV DA to 1349 feet; increase LNAV/VNAV DA to 1567 feet and all Cats visibility ¼ SM; increase all MDAs 60 feet and LNAV Cats C/D and Circling Cat C visibility ¼ SM. For inoperative MALSR when using Webster City altimeter setting, increase LPV all Cats visibility to 1 mile.

MALSR

MISSED APPROACH:
Climb to 3000 direct OXDAH and hold.

AWOS-3PT 118.775	MINNEAPOLIS CENTER 134.0 288.3	UNICOM 123.0 (CTAF)
----------------------------	--	-------------------------------



ELEV 1156 **D** TDZE 1107

3000 OXDAH

4 NM Holding Pattern

GEGQI

EYROV

RWY06

GP 3.00° TCH 54

3000

243°

063°

063°

2800

6 NM

4 NM

1.2 NM

*1.2 NM to RWY06

*LNAV only.

063° to RWY06

6547 X 150

5301 X 100

1254

0.6% UP

0.6% UP

CATEGORY	A	B	C	D
LPV DA		1307-½	200 (200-½)	
LNAV/VNAV DA		1525-1	418 (400-1)	
LNAV MDA		1500-½	393 (400-½)	1500-1 393 (400-1)
CIRCLING	1560-1 404 (500-1)	1620-1 464 (500-1)	1740-1½ 584 (600-1½)	2080-3 924 (1000-3)

MIRL Rwy 12-30 **L**
HIRL Rwy 6-24 **L**
REIL Rwy 12, 24 and 30 **L**

FORT DODGE, IOWA

Amdt 1B 20MAY21

42°33'N-94°12'W

RNAV (GPS) RWY 6

FORT DODGE, IOWA

AL-976 (FAA)

25219

WAAS CH 61015 W06A	APP CRS 063°	Rwy Ldg TDZE 1107 Apt Elev 1156
--	------------------------	---

RNAV (GPS) RWY 6

FORT DODGE RGNL (FOD)

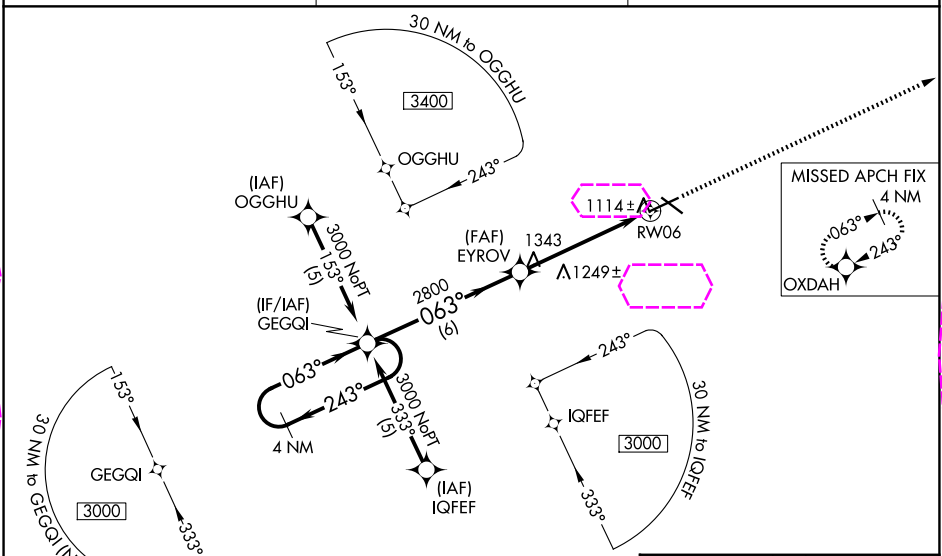
RNP APCH.

⚠ Baro-VNAV NA when using Webster City altimeter setting. For uncompensated Baro-VNAV systems, LNAV/VNAV NA below -17°C or above 54°C. VDP NA when using Webster City altimeter setting. When local altimeter setting not received, use Webster City altimeter setting: increase LPV DA to 1349 feet; increase LNAV/VNAV DA to 1567 feet and all Cats visibility ¼ SM; increase all MDAs 60 feet and LNAV Cats C/D and Circling Cat C visibility ¼ SM. For inoperative MALSR when using Webster City altimeter setting, increase LPV all Cats visibility to 1 mile.

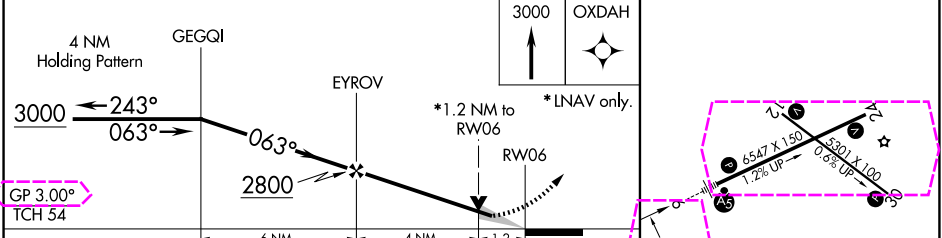
MALSR

MISSED APPROACH:
Climb to 3000 direct OXDAH and hold.

AWOS-3PT 118.775	MINNEAPOLIS CENTER 134.0 288.3	UNICOM 123.0 (CTAF)
----------------------------	--	-------------------------------



ELEV 1156	TDZE 1107
-----------	-----------



CATEGORY	A	B	C	D
LPV DA	1307-½	200 (200-½)		
LNAV/VNAV DA	1525-1	418 (400-1)		
LNAV MDA	1500-½	393 (400-½)	1500-1	393 (400-1)
CIRCLING	1560-1 404 (500-1)	1620-1 464 (500-1)	1740-1½ 584 (600-1½)	2080-3 924 (1000-3)

MIRL Rwy 12-30
HIRL Rwy 6-24
REIL Rwy 12, 24 and 30

FORT DODGE, IOWA
Amdt 1B 20MAY21

42°33'N-94°12'W

RNAV (GPS) RWY 6