

FORT DODGE, IOWA

AL-976 (FAA)

21336

| | | |
|--|------------------------|---|
| WAAS CH 82615 W30A | APP CRS 305° | Rwy Idg TDZE 1142 Apt Elev 1156 |
|--|------------------------|---|

RNAV (GPS) RWY 30

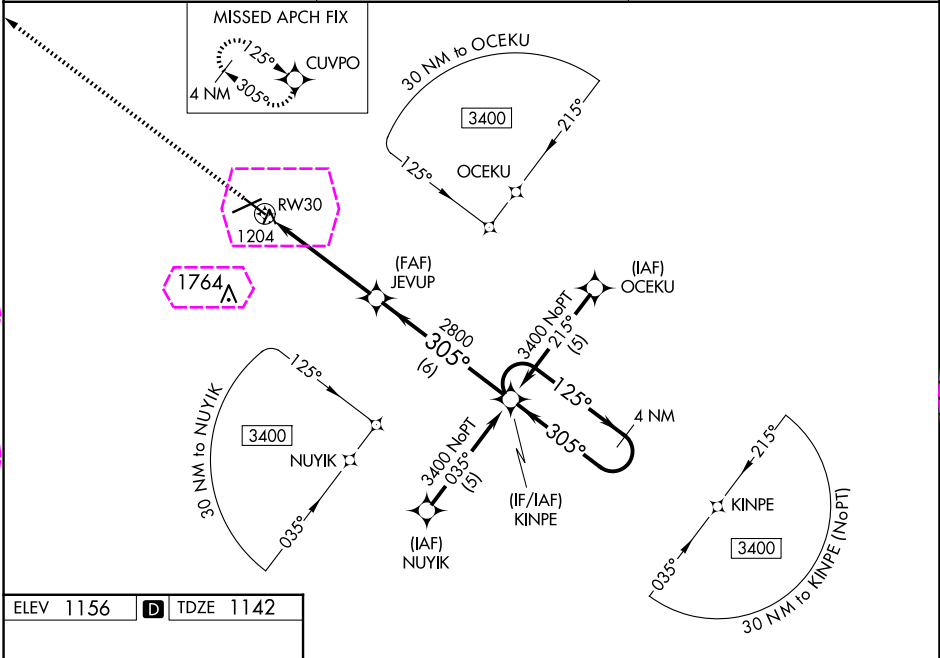
FORT DODGE RGNL (FOD)

RNP APCH.

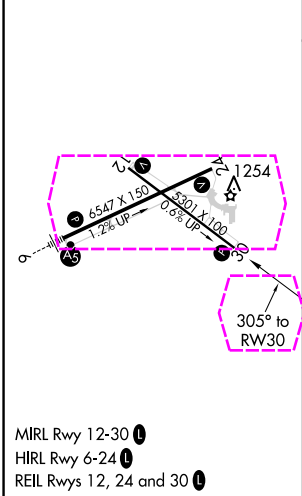
▼ For uncompensated Baro-VNAV systems, LNAV/VNAV NA below -17°C or above 54°C.
▲ Helicopter visibility reduction below ¾ SM NA. VDP and Baro-VNAV NA when using Webster City altimeter setting. When local altimeter setting not received, use Webster City altimeter setting: increase LPV DA to 1466 feet and all Cats visibility ¼ SM; increase LNAV/VNAV DA to 1516 feet; increase all MDA 60 feet and LNAV Cats C/D and Circling Cat C visibility ¼ SM.

MISSED APPROACH: Climb to 3400 direct CUVPO and hold.

| | | |
|----------------------------|--|---------------------------------|
| AWOS-3PT 118.775 | MINNEAPOLIS CENTER 134.0 288.3 | UNICOM 123.0 (CTAF) 0 |
|----------------------------|--|---------------------------------|



| | | |
|-----------|---|-----------|
| ELEV 1156 | D | TDZE 1142 |
|-----------|---|-----------|



| | | | | | |
|------------------|-----------------------|-----------------------|-------------------------|-------------------------------|--|
| 3400 ↑ | | CUVPO ✦ | | KINPE 4 NM Holding Pattern | |
| *LNAV only. | | JEVUP | | 125° → 3400 ← 305° | |
| RW30 1.1 | | *1.1 NM to RW30 | | GP 3.00° TCH 39 | |
| 1.1 | | 4 NM | | 6 NM | |
| CATEGORY | A | B | C | D | |
| LPV DA | 1424-1 282 (300-1) | | | | |
| LNAV/ VNAV DA | 1474-1¼ 332 (400-1¼) | | | | |
| LNAV MDA | 1520-1 378 (400-1) | | | 1520-1¼ 378 (400-1¼) | |
| CIRCLING | 1560-1 404 (500-1) | 1620-1 464 (500-1) | 1740-1½ 584 (600-1½) | 2080-3 924 (1000-3) | |

FORT DODGE, IOWA
Amdt 1B 20MAY21

42°33'N-94°12'W

RNAV (GPS) RWY 30

FORT DODGE, IOWA

AL-976 (FAA)

25219

| | | |
|--|------------------------|---|
| WAAS CH 82615 W30A | APP CRS 305° | Rwy Ldg TDZE 1142 Apt Elev 1156 |
|--|------------------------|---|

RNAV (GPS) RWY 30

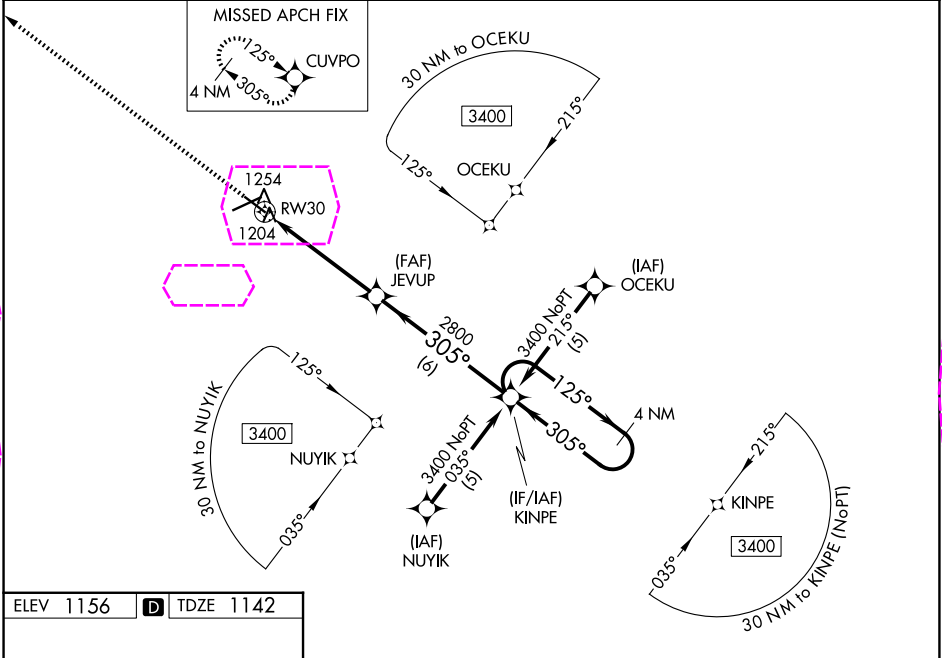
FORT DODGE RGNL (FOD)

RNP APCH.

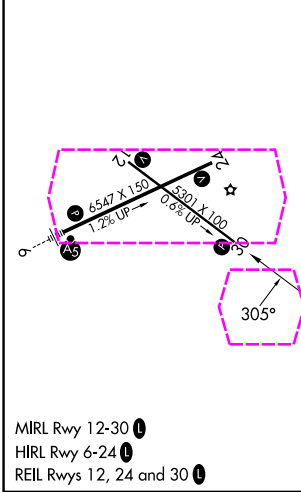
▼ For uncompensated Baro-VNAV systems, LNAV/VNAV NA below -17°C or above 54°C.
▲ Helicopter visibility reduction below ¼ SM NA. VDP and Baro-VNAV NA when using Webster City altimeter setting. When local altimeter setting not received, use Webster City altimeter setting: increase LPV DA to 1466 feet and all Cats visibility ¼ SM; increase LNAV/VNAV DA to 1516 feet; increase all MDA 60 feet and LNAV Cats C/D and Circling Cat C visibility ¼ SM.

MISSED APPROACH: Climb to 3400 direct CUVPO and hold.

| | | |
|----------------------------|--|---------------------------------|
| AWOS-3PT 118.775 | MINNEAPOLIS CENTER 134.0 288.3 | UNICOM 123.0 (CTAF) 0 |
|----------------------------|--|---------------------------------|



| | | |
|------------------|----------|------------------|
| ELEV 1156 | D | TDZE 1142 |
|------------------|----------|------------------|



| | | | | | |
|-----------------|----------------------|----------------------|----------------------|---------------------|----------------------|
| 3400 | CUVPO | 4 NM Holding Pattern | | | |
| *LNAV only. | | | | | |
| *1.1 NM to RW30 | | | | | |
| JEVUP | | | | | |
| KINPE | | | | | |
| 125° → 3400 | | | | | |
| ← 305° | | | | | |
| GP 3.00° | | | | | |
| TCH 39 | | | | | |
| 1.1 4 NM 6 NM | | | | | |
| CATEGORY | A | B | C | D | |
| LPV DA | 1424-1 282 (300-1) | | | | |
| LNAV/VNAV DA | 1474-1¼ 332 (400-1¼) | | | | |
| LNAV MDA | 1520-1 378 (400-1) | | | | 1520-1¼ 378 (400-1¼) |
| CIRCLING | 1560-1 404 (500-1) | 1620-1 464 (500-1) | 1740-1½ 584 (600-1½) | 2080-3 924 (1000-3) | |

FORT DODGE, IOWA
Amdt 1B 20MAY21

42°33'N-94°12'W

RNAV (GPS) RWY 30

NC-3, 07 AUG 2025 to 04 SEP 2025

NC-3, 07 AUG 2025 to 04 SEP 2025