

WAAS CH 45815 W24A	APP CRS 243°	Rwy Ldg 6547 TDZE 1156 Apt Elev 1156
--	------------------------	---

RNAV (GPS) RWY 24
FORT DODGE RGNL (FOD)

RNP APCH.

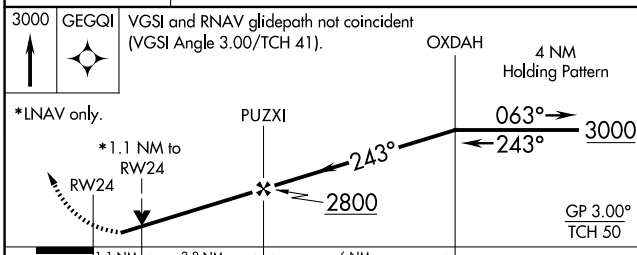
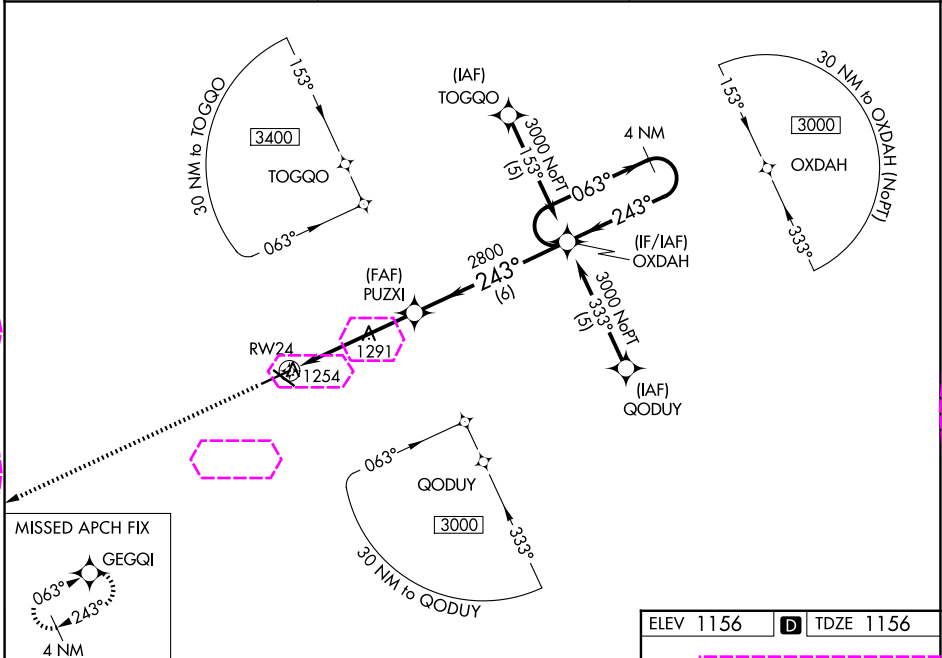
T Baro-VNAV and VDP NA when using Webster City altimeter setting. For uncompensated Baro-VNAV systems, LNAV/VNAV NA below -17°C or above 54°C. When local altimeter setting not received, use Webster City altimeter setting: increase LPV DA to 1448 feet; increase LNAV/VNAV DA to 1546 feet; increase all MDAs 60 feet and LNAV Cat C/D and Circling Cat C visibility ¼ mile.

MISSED APPROACH:
Climb to 3000 direct
GEGQI and hold

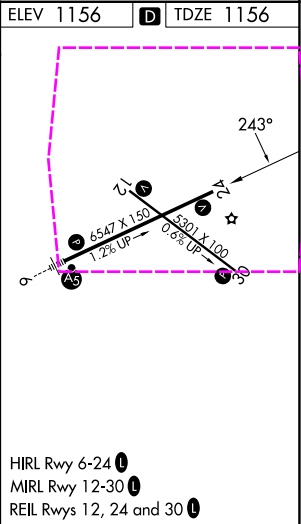
AWOS-3PT
118.775

MINNEAPOLIS CENTER
134.0 288.3

UNICOM
123.0 (CTAF) **L**



CATEGORY		A		B	C	D
LPV	DA	1406-1		250 (300-1)		
RNAV/ VNAV	DA	1504-1½		348 (400-1½)		
RNAV MDA		1560-1 404 (500-1)		1560-1⅛ 404 (500-1⅛)		1560-1¼ 404 (500-1¼)
CIRCLING		1560-1 404 (500-1)	1620-1 464 (500-1)	1740-1½ 584 (600-1½)		2080-3 924 (1000-3)



FORT DODGE, IOWA
Amdt 1C 20MAY21

42°33'N-94°12'W

FORT DODGE RGNL (FOD)
RNAV (GPS) RWY 24

NC-3, 07 AUG 2025 to 04 SEP 2025

NC-3, 07 AUG 2025 to 04 SEP 2025