

FORT DODGE, IOWA

AL-976 (FAA)

21140

WAAS CH 99615 W12A	APP CRS 125°	Rwy Idg TDZE 1128 Apt Elev 1156
--	------------------------	---

RNAV (GPS) RWY 12

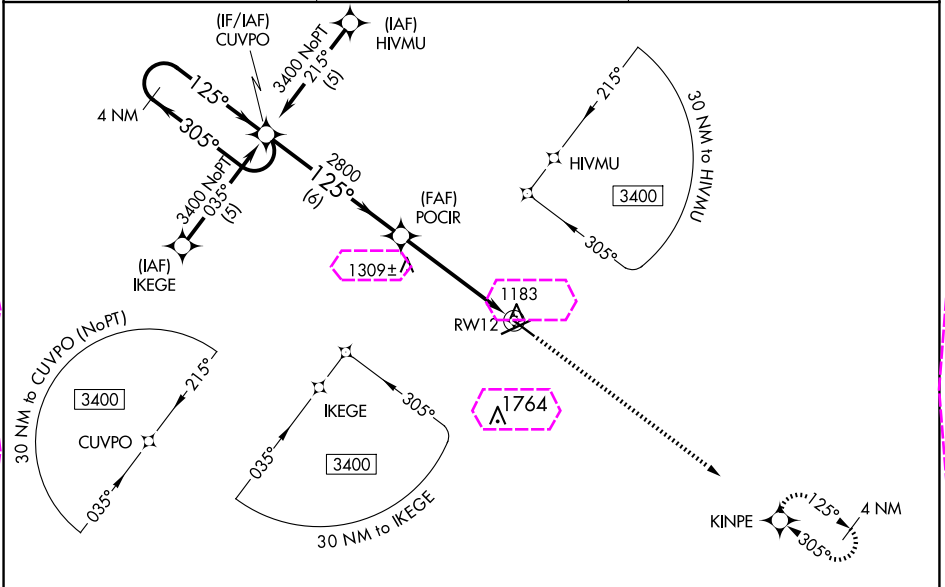
FORT DODGE RGNL (FOD)

RNP APCH.

▼ For uncompensated Baro-VNAV systems, LNAV/VNAV NA below -17°C or above 54°C. Visibility reduction by helicopters NA. When local altimeter setting not received, use Webster City altimeter setting: increase LPV DA to 1447 feet and visibility all Cats ¼ SM; increase LNAV/VNAV DA to 1495 feet; increase all MDAs 60 feet and Circling Cat C visibility ¼ SM. VDP and Baro-VNAV NA when using Webster City altimeter setting.

MISSED APPROACH: Climb to 3400 direct KINPE and hold.

AWOS-3PT 118.775	MINNEAPOLIS CENTER 134.0 288.3	UNICOM 123.0 (CTAF) 0
----------------------------	--	---------------------------------



ELEV 1156 TDZE 1128

4 NM Holding Pattern

3400 ← 305° 125° →

GP 3.00° TCH 51

POCIR

2800

*1.3 NM to RW12

RW12

*LNAV only

6 NM 3.8 NM 1.3

CATEGORY	A	B	C	D
LPV DA	1405-1 277 (300-1)			
LNAV/VNAV DA	1453-1¼ 325 (300-1¼)			
LNAV MDA	1560-1	432 (500-1)	1560-1½ 432 (500-1½)	1560-1½ 432 (500-1½)
CIRCLING	1560-1 404 (500-1)	1620-1 464 (500-1)	1740-1½ 584 (600-1½)	2080-3 924 (1000-3)

MIRL Rwy 12-30 0

HIRL Rwy 6-24 0

REIL Rwy 12, 24 and 30 0

125° to RW12

6547 X 150

5301 X 100

1.2% UP

0.6% UP

FORT DODGE, IOWA
Amdt 1B 20MAY21

42°33'N - 94°12'W

FORT DODGE RGNL (FOD) RNAV (GPS) RWY 12

FORT DODGE, IOWA

AL-976 (FAA)

25219

WAAS CH 99615 W12A	APP CRS 125°	Rwy Ldg TDZE 1128 Apt Elev 1156
--	------------------------	---

RNAV (GPS) RWY 12

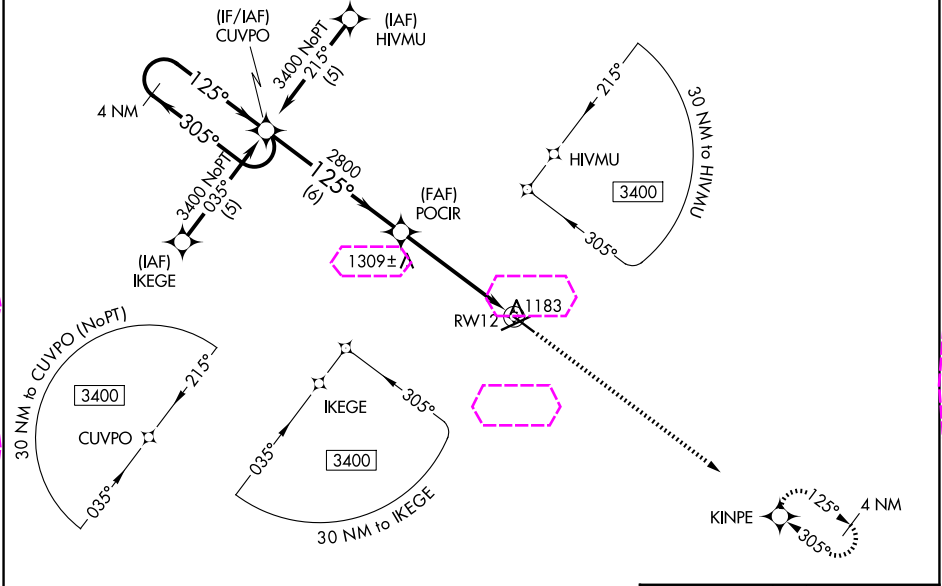
FORT DODGE RGNL (FOD)

RNP APCH.

▼ For uncompensated Baro-VNAV systems, LNAV/VNAV NA below -17°C or above 54°C. Visibility reduction by helicopters NA. When local altimeter setting not received, use Webster City altimeter setting: increase LPV DA to 1447 feet and visibility all Cats ¼ SM; increase LNAV/VNAV DA to 1495 feet; increase all MDAs 60 feet and Circling Cat C visibility ¼ SM. VDP and Baro-VNAV NA when using Webster City altimeter setting.

MISSED APPROACH: Climb to 3400 direct KINPE and hold.

AWOS-3PT 118.775	MINNEAPOLIS CENTER 134.0 288.3	UNICOM 123.0 (CTAF) 0
----------------------------	--	---------------------------------



ELEV 1156 TDZE 1128

CATEGORY	A	B	C	D
LPV DA	1405-1 277 (300-1)			
LNAV/VNAV DA	1453-1¼ 325 (300-1¼)			
LNAV MDA	1560-1	432 (500-1)	1560-1¼ 432 (500-1¼)	1560-1½ 432 (500-1½)
CIRCLING	1560-1 404 (500-1)	1620-1 464 (500-1)	1740-1½ 584 (600-1½)	2080-3 924 (1000-3)

MIRL Rwy 12-30 0

HIRL Rwy 6-24 0

REIL Rwy 12, 24 and 30 0

NC-3, 07 AUG 2025 to 04 SEP 2025

NC-3, 07 AUG 2025 to 04 SEP 2025

FORT DODGE, IOWA
Amdt 1B 20MAY21

42°33'N - 94°12'W

FORT DODGE RGNL (FOD) RNAV (GPS) RWY 12