

FORT DODGE, IOWA

AL-976 (FAA)

22307

LOC I-FOD 109.1	APP CRS 063°	Rwy Idg 6547
		TDZE 1107
		Apt Elev 1156

ILS or LOC RWY 6

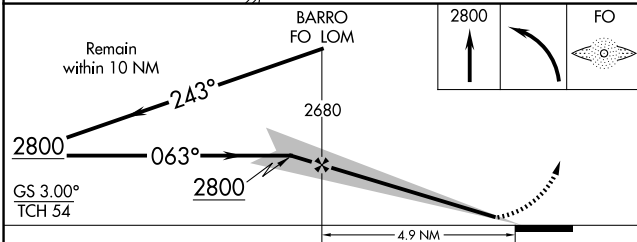
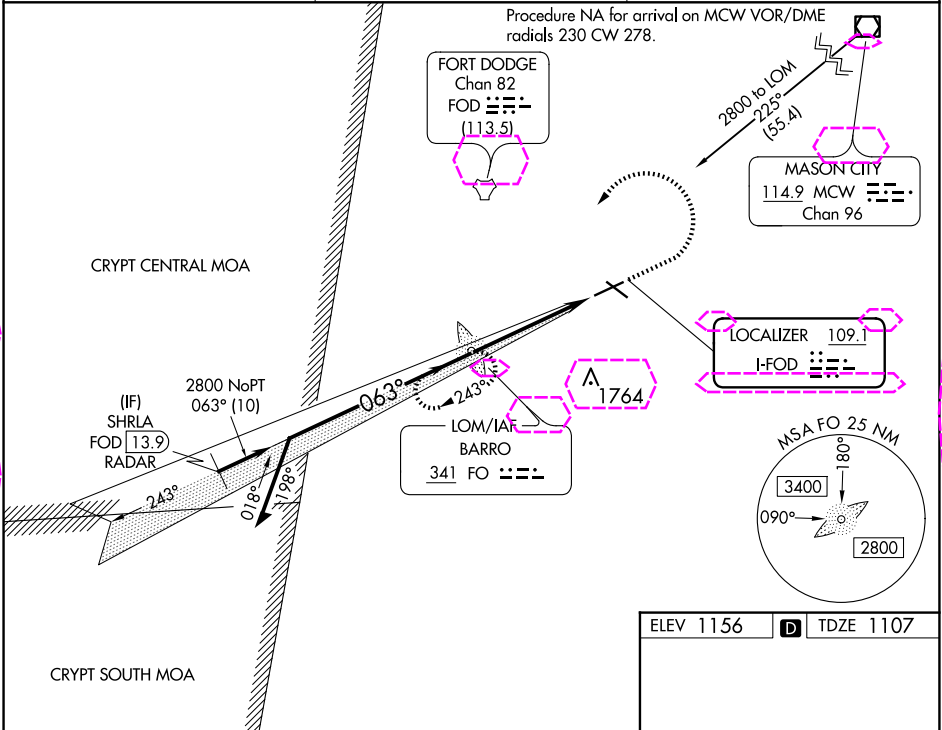
FORT DODGE RGNL (FOD)

ADF required. RADAR required for procedure entry at SHRLA.

MALSR

MISSED APPROACH: Climb to 2800 then left turn direct BARRO LOM and hold.

AWOS-3PT 118.775	MINNEAPOLIS CENTER 134.0 288.3	UNICOM 123.0 (CTAF)
----------------------------	--	-------------------------------



ELEV 1156	TDZE 1107
MIRL Rwy 12-30	
REIL Rwy 12, 24 and 30	
HIRL Rwy 6-24	
FAF to MAP 4.9 NM	
Knots	60 90 120 150 180
Min:Sec	4:54 3:16 2:27 1:58 1:38

CATEGORY	A	B	C	D
S-ILS 6	1307-½ 200 (200-½)			
S-LOC 6	1600-½	493 (500-½)	1600-1	493 (500-1)
CIRCLING	1600-1 444 (500-1)	1620-1 464 (500-1)	1740-1½ 584 (600-1½)	2080-3 924 (1000-3)

FORT DODGE, IOWA
Amdt 8 14JUL22

42°33'N-94°12'W

FORT DODGE RGNL (FOD)
ILS or LOC RWY 6

NC-3, 10 JUL 2025 to 07 AUG 2025

NC-3, 10 JUL 2025 to 07 AUG 2025

FORT DODGE, IOWA

AL-976 (FAA)

25219

LOC I-FOD 109.1	APP CRS 063°	Rwy Ldg TDZE Apt Elev 6547 1107 1156
---------------------------	------------------------	--

ILS or LOC RWY 6
FORT DODGE RGNL (FOD)

ADF required. RADAR required for procedure entry at SHRLA.

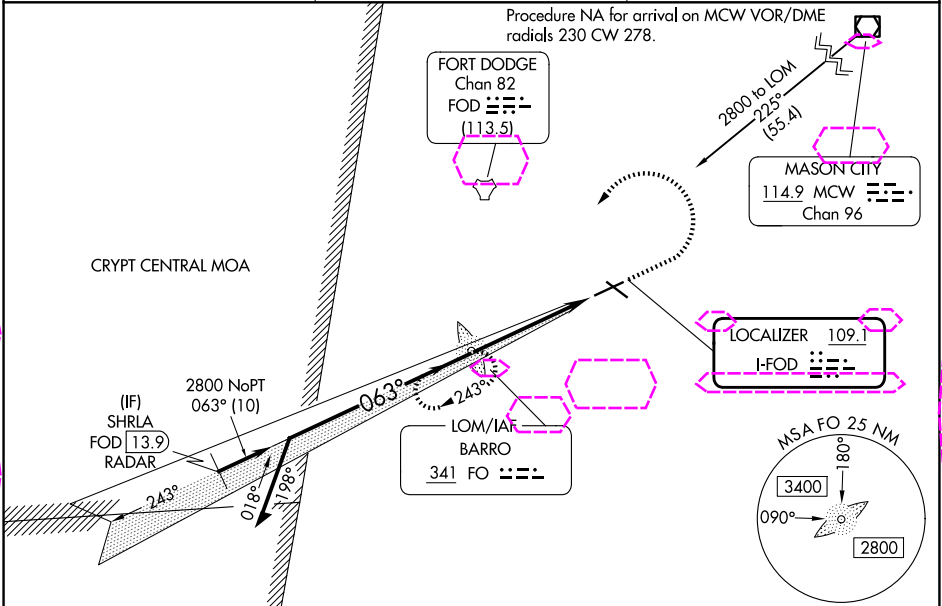
NA

DME from FOD DME. Simultaneous reception of I-FOD and FOD DME required. For inop ALS, increase S-LOC 6 Cat C/D visibility to 1 1/2 SM.

MALSR

MISSED APPROACH: Climb to 2800 then left turn direct BARRO LOM and hold.

AWOS-3PT 118.775	MINNEAPOLIS CENTER 134.0 288.3	UNICOM 123.0 (CTAF)
----------------------------	--	-------------------------------



ELEV 1156

TDZE 1107

Remain within 10 NM

BARRO FO LOM

2800

243°

063°

2800

GS 3.00°

TCH 54

4.9 NM

CATEGORY	A	B	C	D
S-ILS 6	1307-1/2 200 (200-1/2)			
S-LOC 6	1600-1/2	493 (500-1/2)	1600-1	493 (500-1)
CIRCLING	1600-1 444 (500-1)	1620-1 464 (500-1)	1740-1 1/2 584 (600-1 1/2)	2080-3 924 (1000-3)

MIRL Rwy 12-30

REIL Rwy 12, 24 and 30

HIRL Rwy 6-24

FAF to MAP 4.9 NM

Knots	60	90	120	150	180
Min:Sec	4:54	3:16	2:27	1:58	1:38

FORT DODGE, IOWA
Amdt 8 14JUL22

42°33'N-94°12'W

FORT DODGE RGNL (FOD)
ILS or LOC RWY 6

NC-3, 07 AUG 2025 to 04 SEP 2025

NC-3, 07 AUG 2025 to 04 SEP 2025