

VOR RWY 32

NORFOLK, NEBRASKA

AL-974 (FAA)

25219

VOR/DME OFK 114.35 Chan 90(Y)	APP CRS 322°	Rwy Ldg 5160 TDZE 1560 Apt Elev 1573
---	------------------------	--

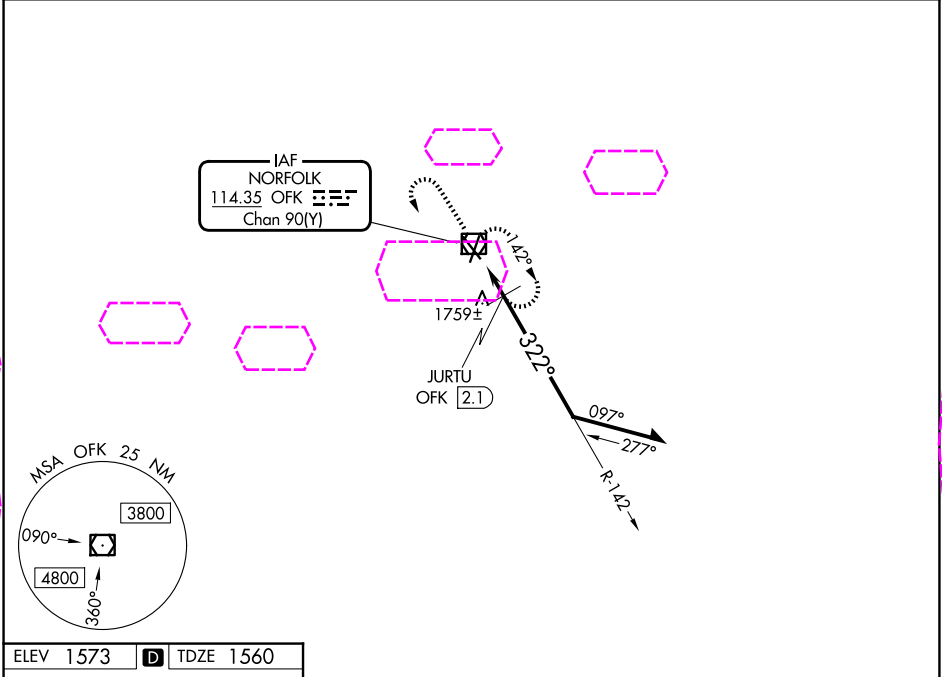
VOR RWY 32

NORFOLK RGNL/KARL STEFAN MEML FLD (OFK)

⚠ Rwy 32 helicopter visibility reduction below ¼ SM NA.

MISSED APPROACH: Climb to 4000 then left turn direct OFK VOR/DME and hold.

ASOS 119.025	MINNEAPOLIS CENTER 125.025 235.625	UNICOM 122.7 (CTAF) 0
------------------------	--	---------------------------------



ELEV 1573	D	TDZE 1560
------------------	----------	------------------

4000

OFK

OFK VOR/DME

3.50°

TCH 49

OFK 1.6

JURTU OFK 2.1

3300

322°

2220

1.1 0.5 NM

Remain within 10 NM

CATEGORY	A	B	C	D
S-32	2220-1 660 (700-1)		2220-1 $\frac{7}{8}$ 660 (700-1 $\frac{7}{8}$)	
CIRCLING	2220-1 647 (700-1)		2260-2 687 (700-2)	2360-2 $\frac{1}{2}$ 787 (800-2 $\frac{1}{2}$)
JURTU FIX MINIMUMS (DME REQUIRED)				
S-32	2020-1 460 (500-1)		2020-1 $\frac{3}{8}$ 460 (500-1 $\frac{3}{8}$)	
CIRCLING	2060-1 487 (500-1)	2100-1 527 (600-1)	2260-2 687 (700-2)	2360-2 $\frac{1}{2}$ 787 (800-2 $\frac{1}{2}$)

HIRL Rwy 2-20 **0**
MIRL Rwy 14-32 **0**
REIL Rwy 20 **0**

NORFOLK, NEBRASKA
Amdt 8A 31DEC20

NORFOLK RGNL/KARL STEFAN MEML FLD (OFK)

41°59'N-97°26'W

VOR RWY 32

NC-2, 07 AUG 2025 to 04 SEP 2025

NC-2, 07 AUG 2025 to 04 SEP 2025