

NORFOLK, NEBRASKA

AL-974 (FAA)

24193

VOR/DME OFK 114.35 Chan 90 (Y)	APP CRS 125°	Rwy Idg 5160 TDZE 1543 Apt Elev 1573
--	------------------------	---

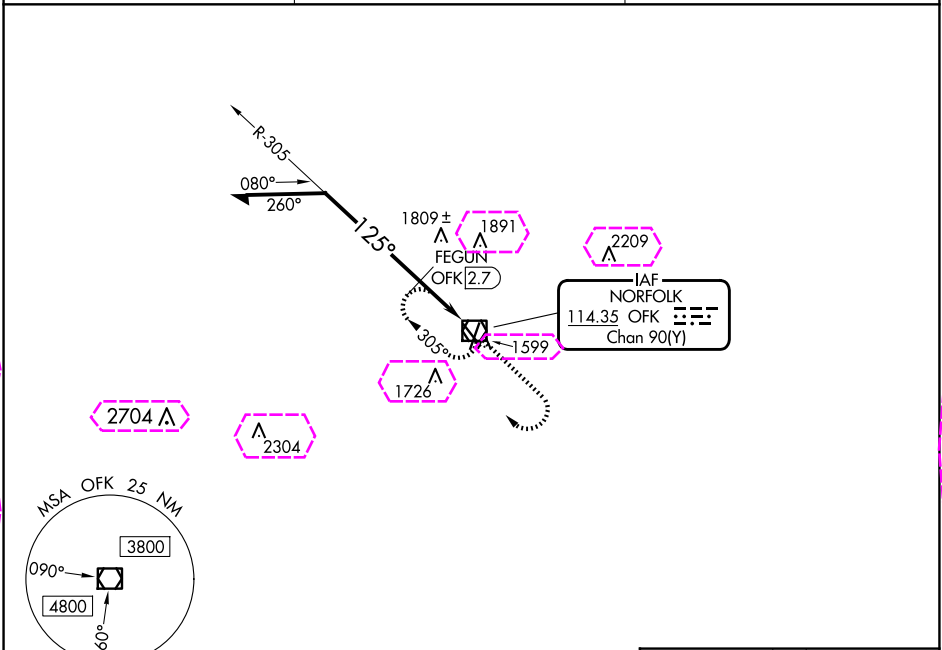
VOR RWY 14

NORFOLK RGNL/KARL STEFAN MEML FLD (OFK)

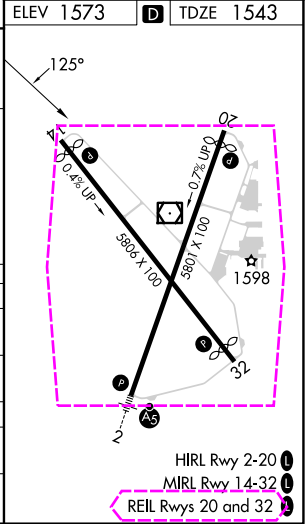
⚠ Rwy 14 helicopter visibility reduction below ¾ SM NA.

MISSED APPROACH: Climb to 3400 then right turn direct OFK VOR/DME and hold.

ASOS 119.025	MINNEAPOLIS CENTER 125.025 235.625	UNICOM 122.7 (CTAF) 0
------------------------	--	--



ELEV 1573 D TDZE 1543				
<p>Remain within 10 NM</p> <p>3400 125° 2300 305° OFK VOR/DME 3400 OFK</p> <p>FEGUN OFK 2.7 OFK 1.9 3.00° TCH 40</p> <p>0.8 NM 1.5 NM</p>				
CATEGORY	A	B	C	D
S-14	2300-1 757 (800-1)	2300-1¼ 757 (800-1¼)	2300-2 757 (800-2)	
CIRCLING	2300-1 727 (800-1)	2300-1¼ 727 (800-1¼)	2300-2 727 (800-2)	2360-2½ 787 (800-2½)
FEGUN FIX MINIMUMS (DME REQUIRED)				
S-14	2060-1 487 (500-1)	517 (500-1)	2060-1¾ 687 (700-2)	517 (500-1¾)
CIRCLING	2060-1 487 (500-1)	2100-1 527 (600-1)	2260-2 687 (700-2)	2360-2½ 787 (800-2½)



NORFOLK, NEBRASKA
Amdt 8A 31DEC20

41°59'N-97°26'W

NORFOLK RGNL/KARL STEFAN MEML FLD (OFK)

VOR RWY 14

NC-2, 10 JUL 2025 to 07 AUG 2025

NC-2, 10 JUL 2025 to 07 AUG 2025

NORFOLK, NEBRASKA

AL-974 (FAA)

25219

VOR/DME OFK 114.35 Chan 90 (Y)	APP CRS 125°	Rwy Ldg 5160 TDZE 1543 Apt Elev 1573
--	------------------------	---

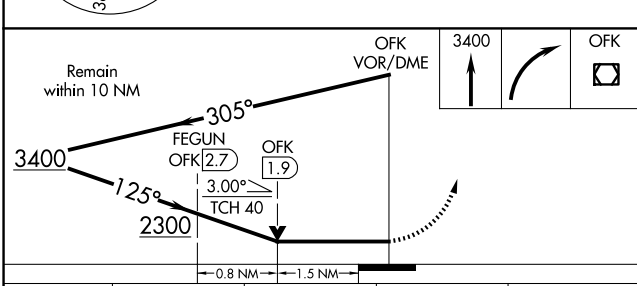
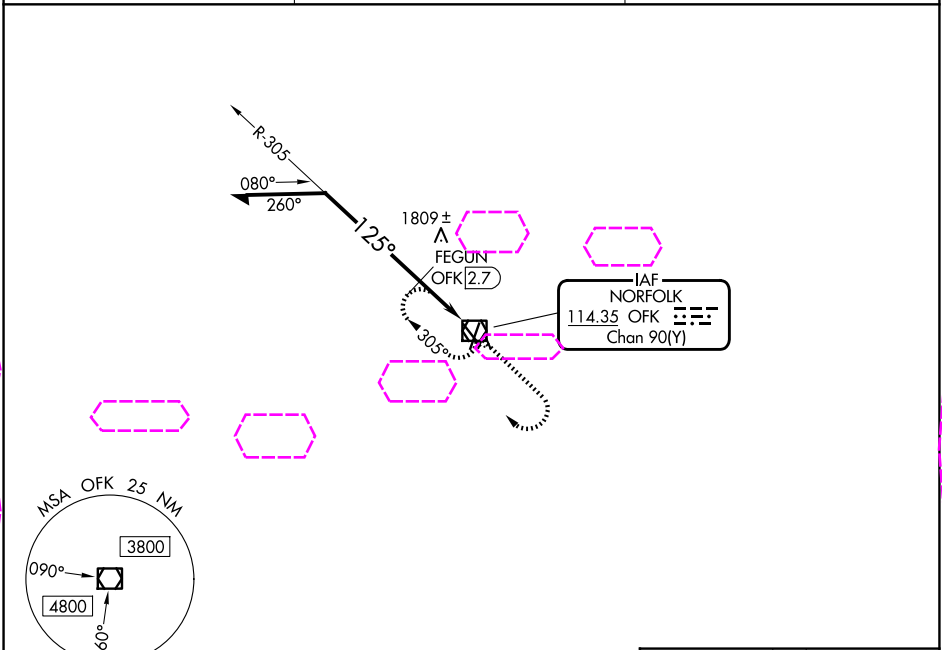
VOR RWY 14

NORFOLK RGNL/KARL STEFAN MEML FLD (OFK)

⚠ Rwy 14 helicopter visibility reduction below ¾ SM NA.

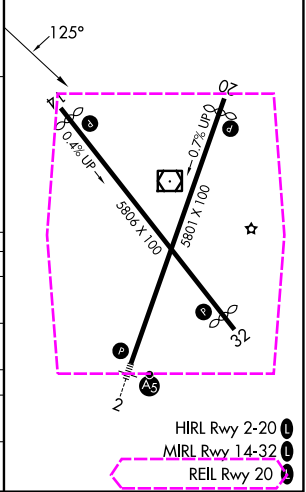
MISSED APPROACH: Climb to 3400 then right turn direct OFK VOR/DME and hold.

ASOS 119.025	MINNEAPOLIS CENTER 125.025 235.625	UNICOM 122.7 (CTAF) 0
------------------------	--	--



ELEV 1573	D	TDZE 1543
-----------	----------	-----------

CATEGORY	A	B	C	D
S-14	2300-1 757 (800-1)	2300-1¼ 757 (800-1¼)	2300-2	757 (800-2)
CIRCLING	2300-1 727 (800-1)	2300-1¼ 727 (800-1¼)	2300-2	2360-2½ 787 (800-2½)
FEGUN FIX MINIMUMS (DME REQUIRED)				
S-14	2060-1	517 (500-1)	2060-1¾	517 (500-1¾)
CIRCLING	2060-1 487 (500-1)	2100-1 527 (600-1)	2260-2 687 (700-2)	2360-2½ 787 (800-2½)



NORFOLK, NEBRASKA
Amdt 8A 31DEC20

NORFOLK RGNL/KARL STEFAN MEML FLD (OFK)
41°59'N-97°26'W
VOR RWY 14

NC-2, 07 AUG 2025 to 04 SEP 2025

NC-2, 07 AUG 2025 to 04 SEP 2025

HIRL Rwy 2-20 **0**
MIRL Rwy 14-32 **0**
REIL Rwy 20 **0**