

NORFOLK, NEBRASKA

AL-974 (FAA)

23334

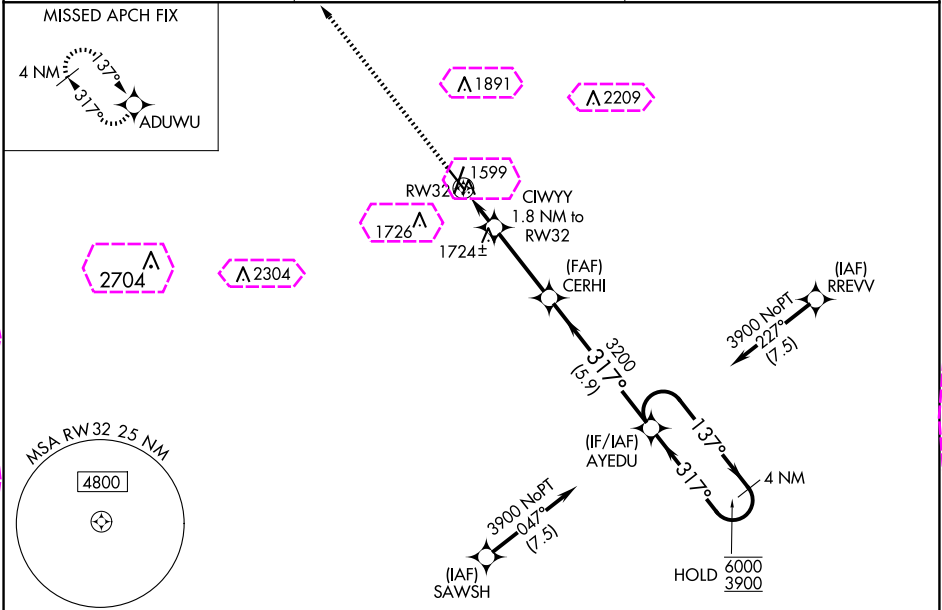
| | | |
|--|------------------------|---|
| WAAS CH 86415 W32A | APP CRS 317° | Rwy Idg TDZE 1560 Apt Elev 1573 |
|--|------------------------|---|

RNAV (GPS) RWY 32

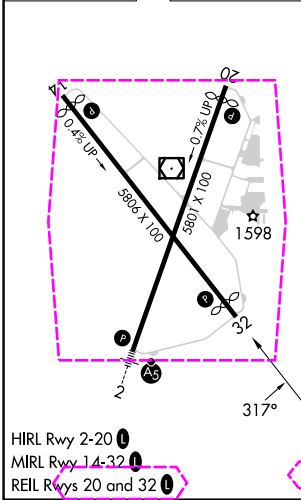
NORFOLK RGNL/KARL STEFAN MEML FLD (OFK)

| | |
|---|---|
| RNP APCH. | MISSED APPROACH: Climb to 3900 direct ADUWU and hold. |
| ▼ Rwy 32 helicopter visibility reduction below ¾ SM NA. ▲ For uncompensated Baro-VNAV systems, LNAV/VNAV NA below -22°C or above 54°C. | |

| | | |
|------------------------|--|---------------------------------|
| ASOS 119.025 | MINNEAPOLIS CENTER 125.025 235.625 | UNICOM 122.7 (CTAF) 0 |
|------------------------|--|---------------------------------|



| | | |
|-----------|---|-----------|
| ELEV 1573 | D | TDZE 1560 |
|-----------|---|-----------|



| | | | | |
|--------------|-----------------------|--|-----------------------|----------------------------|
| 3900 | ADUWU | VGSi and RNAV glidepath not coincident (VGSi Angle 3.50/TCH 49). | | 4 NM Holding Pattern |
| *LNAV only | CIWYY 1.8 NM to RW32 | CERHI 3200 | AYEDU | 137° → 6000 ← 317° 3900 |
| | *1 NM to RW32 | 2180* | 3200 | GP 3.00° TCH 49 |
| | 1 NM | 0.8 | 3.2 NM | 5.9 NM |
| CATEGORY | A | B | C | D |
| LPV DA | 1858-1 298 (300-1) | | | |
| LNAV/VNAV DA | 2019-1⅓ 459 (500-1⅓) | | | |
| LNAV MDA | 1980-1 420 (500-1) | | 1980-1⅓ 420 (500-1⅓) | |
| CIRCLING | 2060-1 487 (500-1) | 2100-1 527 (600-1) | 2260-2 687 (700-2) | 2360-2½ 787 (800-2½) |

NORFOLK, NEBRASKA
Amdt 2 10SEP20

NORFOLK RGNL/KARL STEFAN MEML FLD (OFK)
41°59'N-97°26'W
RNAV (GPS) RWY 32

NC-2, 10 JUL 2025 to 07 AUG 2025

NC-2, 10 JUL 2025 to 07 AUG 2025

NORFOLK, NEBRASKA

AL-974 (FAA)

25219

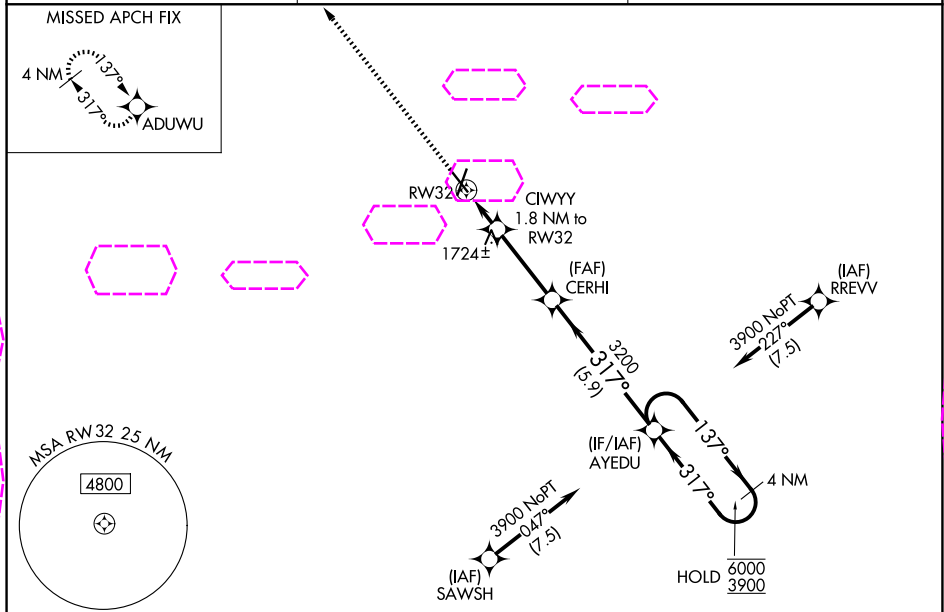
| | | |
|--|------------------------|---|
| WAAS CH 86415 W32A | APP CRS 317° | Rwy Ldg TDZE 1560 Apt Elev 1573 |
|--|------------------------|---|

RNAV (GPS) RWY 32

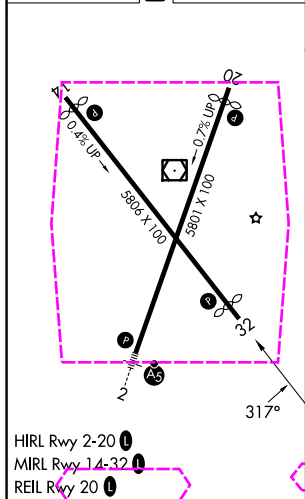
NORFOLK RGNL/KARL STEFAN MEML FLD (OFK)

| | |
|---|---|
| RNP APCH. | MISSED APPROACH: Climb to 3900 direct ADUWU and hold. |
| Rwy 32 helicopter visibility reduction below 3/4 SM NA. For uncompensated Baro-VNAV systems, LNAV/VNAV NA below -22°C or above 54°C. | |

| | | |
|------------------------|--|---------------------------------|
| ASOS 119.025 | MINNEAPOLIS CENTER 125.025 235.625 | UNICOM 122.7 (CTAF) 0 |
|------------------------|--|---------------------------------|



| | | |
|-----------|----------|-----------|
| ELEV 1573 | D | TDZE 1560 |
|-----------|----------|-----------|



| | | | | |
|--------------|----------------------------|--|----------------------------|----------------------------|
| 3900 | ADUWU | VGS and RNAV glidepath not coincident (VGS Angle 3.50/TCH 49). | | 4 NM Holding Pattern |
| *LNAV only | CIWYY 1.8 NM to RW32 | CERHI 3200 | AYEDU | 137° → 6000 ← 317° 3900 |
| | *1 NM to RW32 | 2180* | 3200 | GP 3.00° TCH 49 |
| | 1 NM | 0.8 | 3.2 NM | 5.9 NM |
| CATEGORY | A | B | C | D |
| LPV DA | 1858-1 298 (300-1) | | | |
| LNAV/VNAV DA | 2019-1 3/8 459 (500-1 3/8) | | | |
| LNAV MDA | 1980-1 420 (500-1) | | 1980-1 3/8 420 (500-1 3/8) | |
| CIRCUING | 2060-1 487 (500-1) | 2100-1 527 (600-1) | 2260-2 687 (700-2) | 2360-2 1/2 787 (800-2 1/2) |

NORFOLK, NEBRASKA
Amdt 2 10SEP20

NORFOLK RGNL/KARL STEFAN MEML FLD (OFK)
41°59'N-97°26'W
RNAV (GPS) RWY 32

NC-2, 07 AUG 2025 to 04 SEP 2025

NC-2, 07 AUG 2025 to 04 SEP 2025