

NORFOLK, NEBRASKA

AL-974 (FAA)

24025

WAAS CH 62915 W14A	APP CRS 137°	Rwy Idg TDZE Apt Elev	5160 1543 1573
--	------------------------	-----------------------------	---

RNAV (GPS) RWY 14

NORFOLK RGNL/KARL STEFAN MEML FLD (OFK)

RNP APCH - GPS.

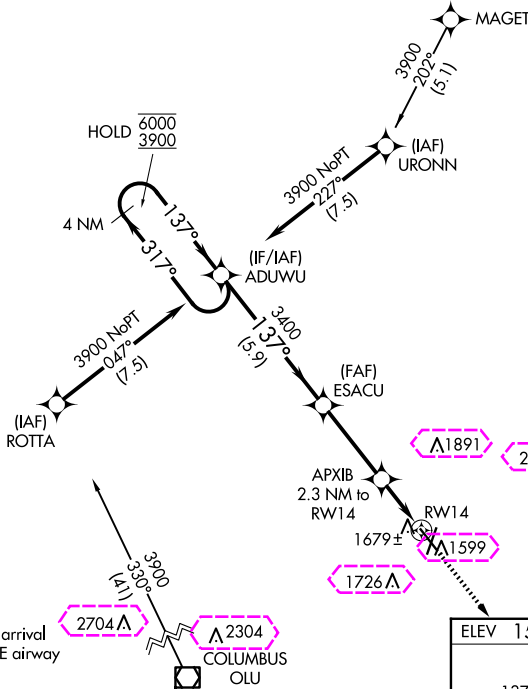
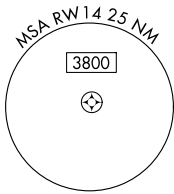
For uncompensated Baro-VNAV systems, LNAV/VNAV
NA below -23°C or above 54°C.

MISSED APPROACH: Climb to 3900 direct AYEDU and hold.

ASOS
119.025

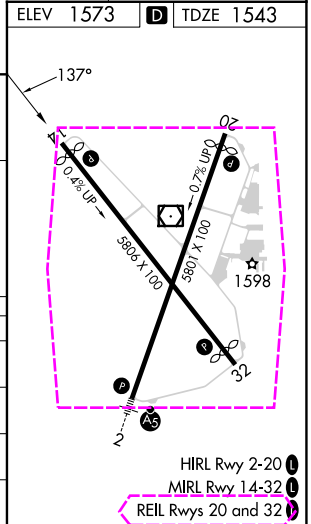
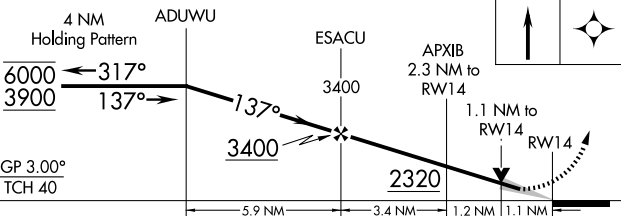
MINNEAPOLIS CENTER
125.025 235.625

UNICOM
122.7 (CTAF) 0



Procedure NA for arrival
on OLU VOR/DME airway
radial 308.

MISSED APCH FIX



CATEGORY	A	B	C	D
LPV DA	1808-1	265 (300-1)		
LNAV/VNAV DA	1860-1	317 (300-1)		
LNAV MDA	1940-1	397 (400-1)	1940-1½	397 (400-1½)
CIRCLING	2060-1 487 (500-1)	2100-1 527 (600-1)	2260-2 687 (700-2)	2360-2½ 787 (800-2½)

HIRL Rwy 2-20 0

MIRL Rwy 14-32 0

REIL Rwy 20 and 32 0

NORFOLK, NEBRASKA

Amdt 2A 25JAN24

NORFOLK RGNL/KARL STEFAN MEML FLD (OFK)

41°59'N-97°26'W

RNAV (GPS) RWY 14

NC-2, 10 JUL 2025 to 07 AUG 2025

NC-2, 10 JUL 2025 to 07 AUG 2025

RNAV (GPS) RWY 14

NC-2, 07 AUG 2025 to 04 SEP 2025