

NORFOLK, NEBRASKA

AL-974 (FAA)

24193

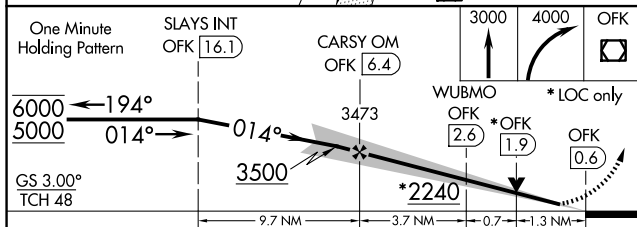
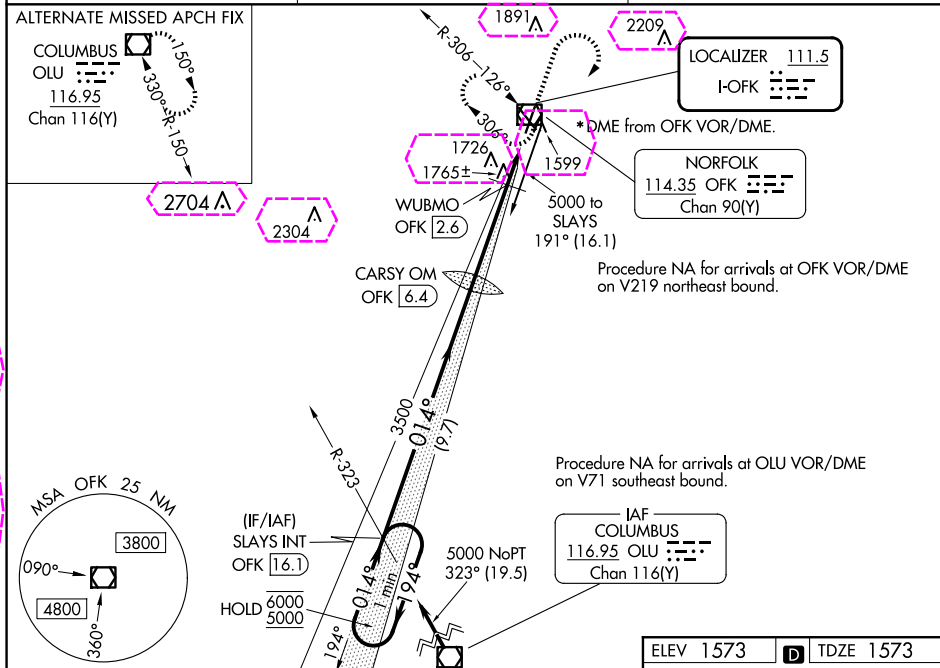
LOC I-OFK 111.5	APP CRS 014°	Rwy Idg TDZE Apt Elev	5801 1573 1573
---------------------------	------------------------	-----------------------------	---


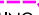
ILS or LOC RWY 2

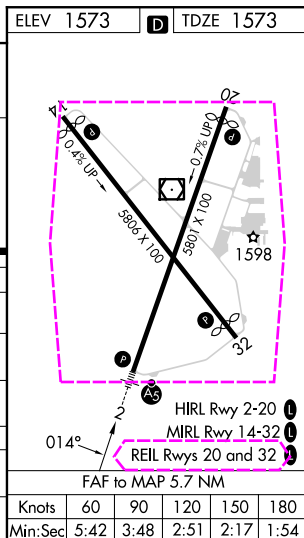
NORFOLK RGNL/KARL STEFAN MEML FLD (OFK)

⚠ For inop ALS, increase S-LOC 2 Cat C/D visibility to 1½ SM.	MALSR 	MISSED APPROACH: Climb to 3000 then climbing right turn to 4000 direct OFK VOR/DME and hold.
--	-----------	--

ASOS 119.025	MINNEAPOLIS CENTER 125.025 235.625	UNICOM 122.7 (CTAF) 0
------------------------	--	--



CATEGORY	A	B	C	D
S-ILS 2	1773-½ 200 (200-½)			
S-LOC 2	2240-½ 667 (700-½)		2240-1½ 667 (700-1½)	
 CIRCLING	2240-1 667 (700-1)		2260-2 687 (700-2)	2360-2½ 787 (800-2½)
WUBMO FIX MINIMUMS (DME REQUIRED)				
S-LOC 2	2020-½ 447 (500-½)		2020-¾ 447 (500-¾)	
 CIRCLING	2080-1 507 (600-1)	2100-1 527 (600-1)	2260-2 687 (700-2)	2360-2½ 787 (800-2½)



NORFOLK, NEBRASKA

Amdt 6A 10SEP20

NORFOLK RGNL/KARL STEFAN MEML FLD (OFK)

41°59'N-97°26'W

ILS or LOC RWY 2

NC-2, 10 JUL 2025 to 07 AUG 2025

NC-2, 10 JUL 2025 to 07 AUG 2025

