

GAINESVILLE, FLORIDA

AL-973 (FAA)

24249


WAAS CH <b>60916</b> <b>W29A</b>	APP CRS <b>286°</b>	Rwy Idg <b>7504</b> TDZE <b>122</b> Apt Elev <b>151</b>
--	------------------------	---

# RNAV (GPS) RWY 29

GAINESVILLE RGNL (GNV)

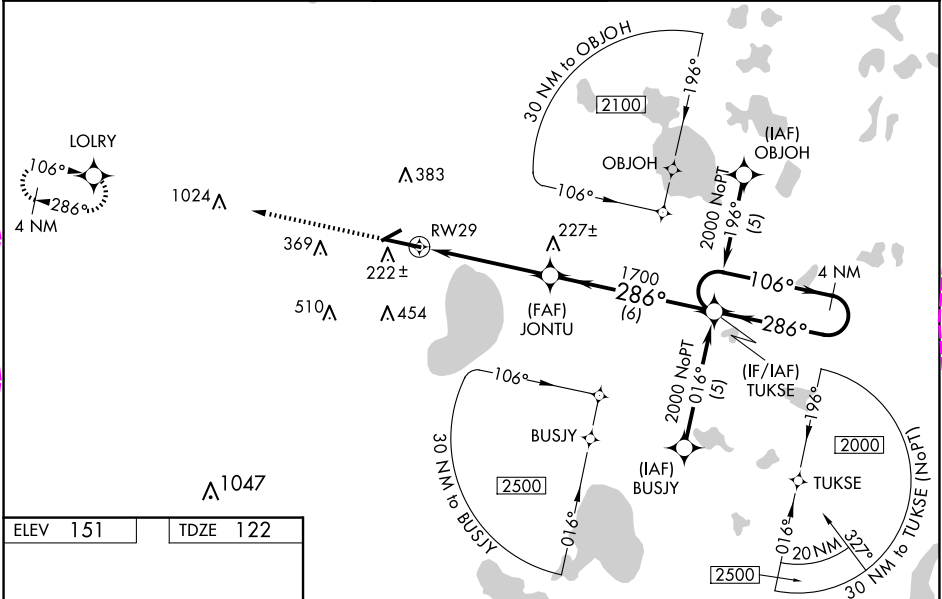
**⚠** DME/DME RNP-0.3 NA. For inoperative MALS, increase LPV all Cats visibility to RVR 5000 and increase LNAV Cat D visibility to RVR 6000. For inoperative MALS using Ocala Intl-Jim Taylor Fld altimeter setting, increase LPV all Cats visibility to 1½ mile. When local altimeter setting not received, use Ocala Intl-Jim Taylor Fld altimeter setting and increase LPV DA to 501 feet and all Cats visibility to RVR 5000; increase LNAV/VNAV DA to 561 feet and all Cats visibility to RVR 5000; increase all MDAs 100 feet and increase LNAV Cat C visibility to RVR 4000; increase Circling Cat C visibility ¼ SM and Circling Cat D ½ SM. For uncompensated Baro-VNAV systems, LNAV/VNAV NA below -15°C (5°F) or above 48°C (118°F). Baro-VNAV and VDP NA when using Ocala Intl-Jim Taylor Fld altimeter setting. When VGSI inoperative, Circling Rwy 25 NA at night.

MALS




MISSED APPROACH:  
Climb to 2100 direct  
LOLRY and hold.

ATIS <b>127.15</b>	JACKSONVILLE APP CON <b>118.175 338.25</b>	GAINESVILLE TOWER★ <b>119.55 (CTAF) 0 353.7</b>	GND CON <b>121.7</b>	UNICOM <b>122.95</b>
-----------------------	---	--	-------------------------	-------------------------




ELEV 151	TDZE 122
----------	----------

2100



LOLRY



VGSI and RNAV glidepath not coincident (VGSI Angle 3.00/TCH 55).

TUKSE

4 NM Holding Pattern

\*LNAV Only

\*1 NM to RW29

JONTU

RW29

1 NM

3.8 NM

6 NM

106°

286°

2000

GP 3.00° TCH 50

1700

CATEGORY	A	B	C	D
LPV DA		420/24	298 (300-½)	
LNAV/VNAV DA		480/40	358 (400-¾)	
LNAV MDA	500/24	378 (400-½)		500/50 378 (400-1)
CIRCLING	620-1 469 (500-1)	700-1 549 (600-1)	760-1¾ 609 (700-1¾)	820-2 669 (700-2)

GAINESVILLE, FLORIDA

Amtd 1C 20MAY21

29°41'N-82°16'W

GAINESVILLE RGNL (GNV)

# RNAV (GPS) RWY 29

SE-3, 10 JUL 2025 to 07 AUG 2025

SE-3, 10 JUL 2025 to 07 AUG 2025

GAINESVILLE, FLORIDA

AL-973 (FAA)

25219

WAAS CH <b>60916</b> <b>W29A</b>	APP CRS <b>286°</b>	Rwy Ldg <b>7504</b> TDZE <b>122</b> Apt Elev <b>151</b>
--	------------------------	---

# RNAV (GPS) RWY 29

GAINESVILLE RGNL (GNV)

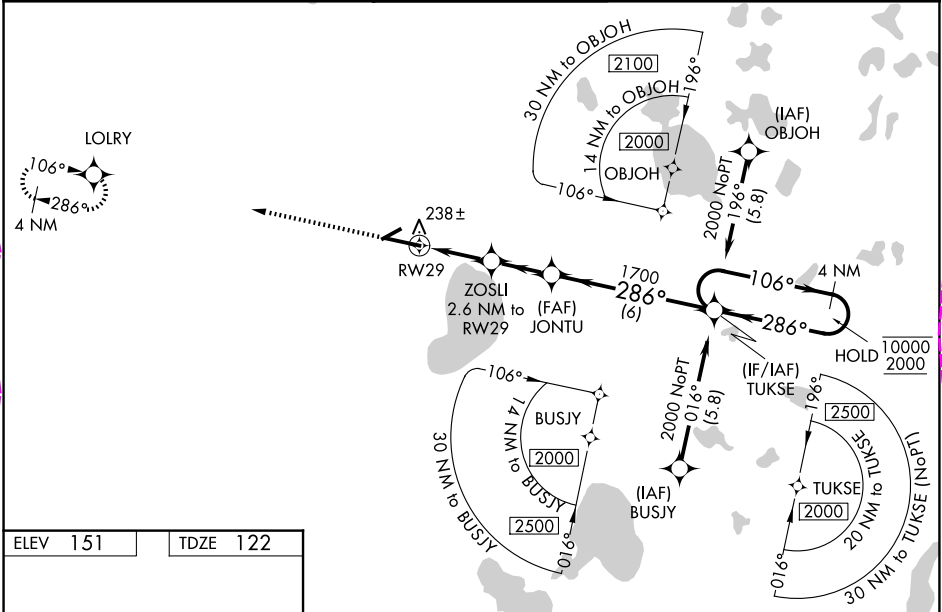
RNP APCH - GPS.

▼ For uncompensated Baro-VNAV systems, LNAV/VNAV NA below -3°C or above 54°C.  
▲ Baro-VNAV and VDP NA when using OCF altimeter setting. When local altimeter setting not received, use OCF altimeter setting and increase LPV DA to 403 feet; increase LNAV/VNAV DA to 488 feet and all visibilities to RVR 3500. Increase all MDAs 100 feet and LNAV visibility Cat C/D to RVR 5000, and Circling visibility Cat C/D ½ SM. For inop ALS, increase LNAV/VNAV all Cats visibility to RVR 4500 and LNAV Cats C and D visibility to RVR 5500. For inop ALS when using OCF altimeter setting, increase LPV all Cats visibility to RVR 4500, LNAV/VNAV all Cats visibility to RVR 5500, and LNAV visibility Cat C/D to 1 ½ SM.

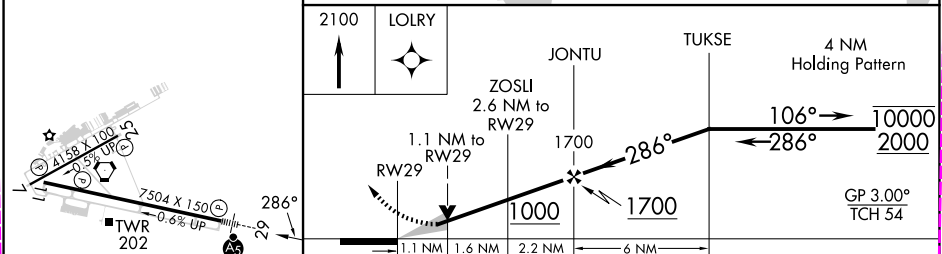
MALSR

MISSED APPROACH:  
Climb to 2100 direct  
LOLRY and hold.

ATIS <b>127.15</b>	JACKSONVILLE APP CON <b>118.175 338.25</b>	GAINESVILLE TOWER★ <b>119.55 (CTAF) 353.7</b>	GND CON <b>121.7</b>	UNICOM <b>122.95</b>
-----------------------	---	--	-------------------------	-------------------------



ELEV 151	TDZE 122
----------	----------



CATEGORY	A	B	C	D
LPV DA		322/24	200 (200-½)	
LNAV/VNAV DA		407/24	285 (300-½)	
LNAV MDA	500/24	378 (400-½)	500/35	378 (400-¾)
CIRCLING	620-1 469 (500-1)	700-1 549 (600-1)	760-1¾ 609 (700-1¾)	820-2 669 (700-2)

REIL Rwy 11  
MIRL Rwy 7-25  
HIRL Rwy 11-29

GAINESVILLE, FLORIDA

Amf 2 07AUG25

29°41'N-82°16'W

GAINESVILLE RGNL (GNV)

# RNAV (GPS) RWY 29

SE-3, 07 AUG 2025 to 04 SEP 2025

SE-3, 07 AUG 2025 to 04 SEP 2025