

GAINESVILLE, FLORIDA

AL-973 (FAA)

24249

WAAS CH <b>86604</b> <b>W25A</b>	APP CRS <b>245°</b>	Rwy Idg TDZE <b>144</b> Apt Elev <b>151</b>	<b>4158</b>
--	------------------------	---	-------------

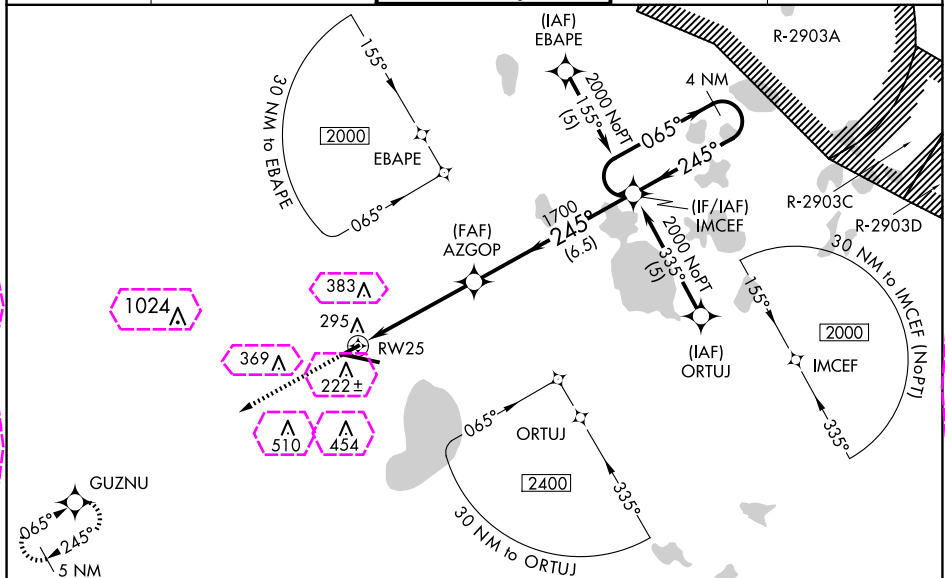
# RNAV (GPS) RWY 25

GAINESVILLE RGNL (GNV)

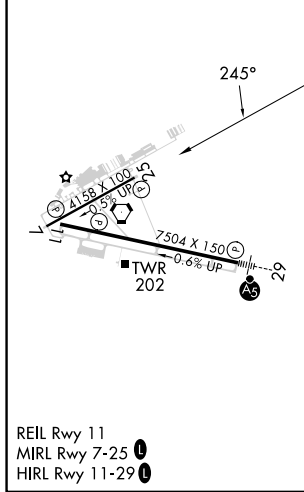
**⚠** Baro-VNAV NA when using Ocala Intl-Jim Taylor Fld altimeter setting. For uncompensated Baro-VNAV systems, LNAV/VNAV NA below -15° C (5° F) or above 48° C (118° F).  
**⚠** DME/DME RNP-0.3 NA. Visibility reduction by helicopters NA. When local altimeter setting not received, use Ocala Intl-Jim Taylor Fld altimeter setting and increase LPV DA to 582 feet and all Cats visibility ¼ SM; increase LNAV/VNAV DA to 775 feet and all Cats visibility ¼ SM; increase all MDAs 100 feet and increase LNAV Cat C and Circling Cat C visibility ¼ SM and LNAV Cat D and Circling Cat D ½ SM. When VGSI inoperative, straight-in/Circling Rwy 25 procedure NA at night.


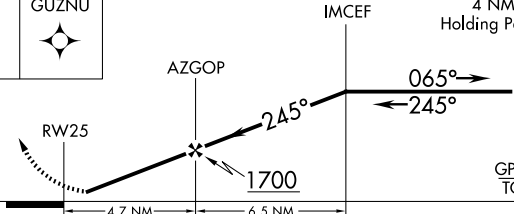
**MISSED APPROACH:**  
Climb to 2100 direct GUZNU and hold.

ATIS <b>127.15</b>	JACKSONVILLE APP CON <b>118.175 338.25</b>	GAINESVILLE TOWER★ <b>119.55 (CTAF) 0 353.7</b>	GND CON <b>121.7</b>	UNICOM <b>122.95</b>
-----------------------	---	--	-------------------------	-------------------------



ELEV <b>151</b>	TDZE <b>144</b>
-----------------	-----------------



2100 ↑		GUZNU 		 IMCEF 4 NM Holding Pattern 065° → ← 245° 2000 GP 3.00° TCH 42	
		AZGOP		1700	
		4.7 NM		6.5 NM	
CATEGORY		A	B	C	D
LPV DA	501-1¼ 357 (400-1¼)				
LNAV/ VNAV	694-2 550 (600-2)				
LNAV MDA	560-1 416 (500-1)			560-1¼ 416 (500-1¼)	
CIRCLING	620-1 469 (500-1)	700-1 549 (600-1)	760-1¾ 609 (700-1¾)	820-2 669 (700-2)	

GAINESVILLE, FLORIDA  
Amdt 1C 20MAY21

29°41'N-82°16'W

# GAINESVILLE RGNL (GNV) RNAV (GPS) RWY 25

SE-3, 10 JUL 2025 to 07 AUG 2025

SE-3, 10 JUL 2025 to 07 AUG 2025

