

GAINESVILLE, FLORIDA

AL-973 (FAA)

24249

WAAS CH <b>50115</b> <b>W11A</b>	APP CRS <b>106°</b>	Rwy Idg <b>7504</b> TDZE <b>147</b> Apt Elev <b>151</b>
--	------------------------	---

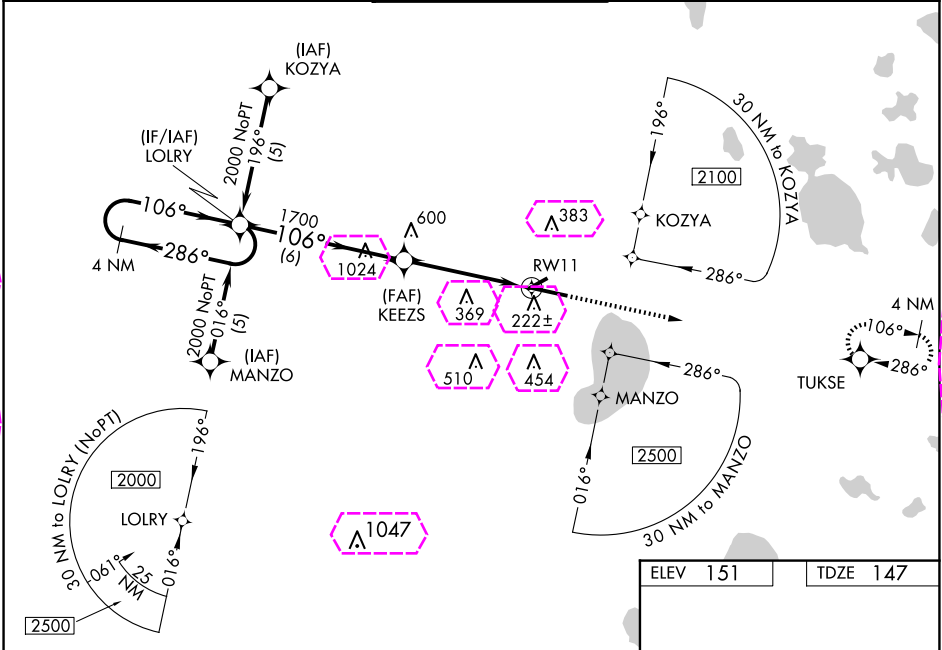
# RNAV (GPS) RWY 11

GAINESVILLE RGNL (GNV)

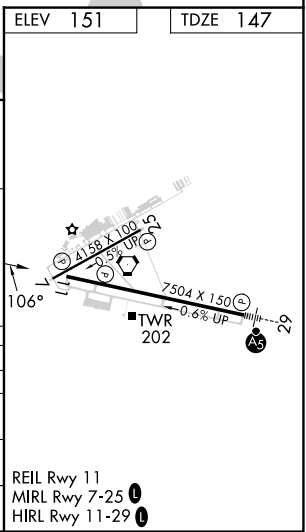
**⚠** For uncompensated Baro-VNAV systems, LNAV/VNAV NA below -1.5° C (5° F) or above 48°C (120°F). DME/DME RNP-0.3 NA. When local altimeter setting not received, use Ocala Intl-Jim Taylor Fld altimeter setting and increase LPV DA to 541 feet and all Cats visibility ½ SM; increase LNAV/VNAV DA to 681 feet and all Cats visibility ½ SM; increase all MDAs 100 feet and increase LNAV Cat C/D and Circling Cat C visibility ¼ SM and Circling Cat D ½ SM. Visibility reduction by helicopters NA. Baro-VNAV NA when using Ocala Intl-Jim Taylor Fld altimeter setting. When VGSi inoperative, Circling Rwy 25 NA at night. VDP NA when using Ocala Intl-Jim Taylor Fld altimeter setting.

MISSED APPROACH: Climb to 2000 direct TUKSE and hold.

ATIS <b>127.15</b>	JACKSONVILLE APP CON <b>118.175 338.25</b>	GAINESVILLE TOWER★ <b>119.55 (CTAF) 0 353.7</b>	GND CON <b>121.7</b>	UNICOM <b>122.95</b>
-----------------------	---	--	-------------------------	-------------------------



VGSi and RNAV glidepath not coincident (VGSi Angle 3.00/TCH 54).				
4 NM Holding Pattern		2000 TUKSE		
GP 3.00° TCH 45		* 1.3 NM to RWY 11 * LNAV only		
6 NM		3.4 NM	1.3 NM	
CATEGORY	A	B	C	D
LPV DA	460-1 313 (400-1)			
LNAV/DA VNAV	600-1½ 453 (500-1½)			
LNAV MDA	600-1	453 (500-1)	600-1¼ 453 (500-1¼)	600-1½ 453 (500-1½)
CIRCLING	620-1 469 (500-1)	700-1 549 (600-1)	760-1¾ 609 (700-1¾)	820-2 669 (700-2)



GAINESVILLE, FLORIDA  
Amdt 1C 20MAY21

29°41'N-82°16'W

GAINESVILLE RGNL (GNV)  
RNAV (GPS) RWY 11

GAINESVILLE, FLORIDA

AL-973 (FAA)

25219

WAAS CH <b>50115</b> <b>W11A</b>	APP CRS <b>106°</b>	Rwy Ldg <b>7504</b> TDZE <b>147</b> Apt Elev <b>151</b>
--	------------------------	---

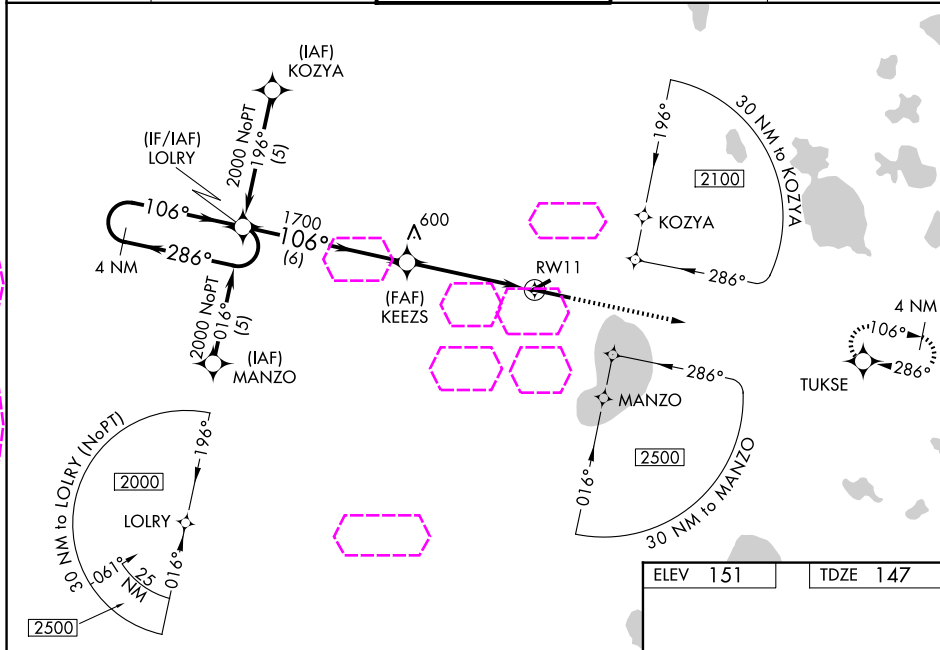
# RNAV (GPS) RWY 11

GAINESVILLE RGNL (GNV)

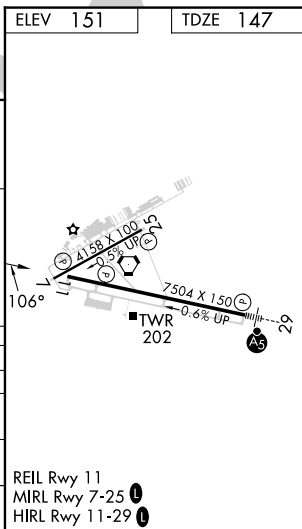
**⚠** For uncompensated Baro-VNAV systems, LNAV/VNAV NA below -1.5° C (5° F) or above 48°C (120°F). DME/DME RNP-0.3 NA. When local altimeter setting not received, use Ocala Intl-Jim Taylor Fld altimeter setting and increase LPV DA to 541 feet and all Cats visibility ½ SM; increase LNAV/VNAV DA to 681 feet and all Cats visibility ½ SM; increase all MDAs 100 feet and increase LNAV Cat C/D and Circling Cat C visibility ¼ SM and Circling Cat D ½ SM. Visibility reduction by helicopters NA. Baro-VNAV NA when using Ocala Intl-Jim Taylor Fld altimeter setting. When VGSI inoperative, Circling Rwy 25 NA at night. VDP NA when using Ocala Intl-Jim Taylor Fld altimeter setting.

MISSED APPROACH: Climb to 2000 direct TUKSE and hold.

ATIS <b>127.15</b>	JACKSONVILLE APP CON <b>118.175 338.25</b>	GAINESVILLE TOWER★ <b>119.55 (CTAF) 0 353.7</b>	GND CON <b>121.7</b>	UNICOM <b>122.95</b>
-----------------------	---	--	-------------------------	-------------------------



VGSI and RNAV glidepath not coincident (VGSI Angle 3.00/TCH 54).				
4 NM Holding Pattern		2000 TUKSE		
GP 3.00° TCH 45		* 1.3 NM to RW11 * LNAV only		
6 NM		3.4 NM	1.3 NM	
CATEGORY	A	B	C	D
LPV DA	460-1 313 (400-1)			
LNAV/DA VNAV	600-1½ 453 (500-1½)			
LNAV MDA	600-1	453 (500-1)	600-1¼ 453 (500-1¼)	600-1½ 453 (500-1½)
CIRCLING	620-1 469 (500-1)	700-1 549 (600-1)	760-1¾ 609 (700-1¾)	820-2 669 (700-2)



GAINESVILLE, FLORIDA

Amdt 1C 20MAY21

29°41'N-82°16'W

GAINESVILLE RGNL (GNV)

RNAV (GPS) RWY 11