

GAINESVILLE, FLORIDA

AL-973 (FAA)

25163

| | | |
|---------------------------|------------------------|---|
| LOC I-GNV 111.3 | APP CRS 286° | Rwy Ldg TDZE 122 Apt Elev 151 |
|---------------------------|------------------------|---|

ILS or LOC RWY 29
GAINESVILLE RGNL (GNV)

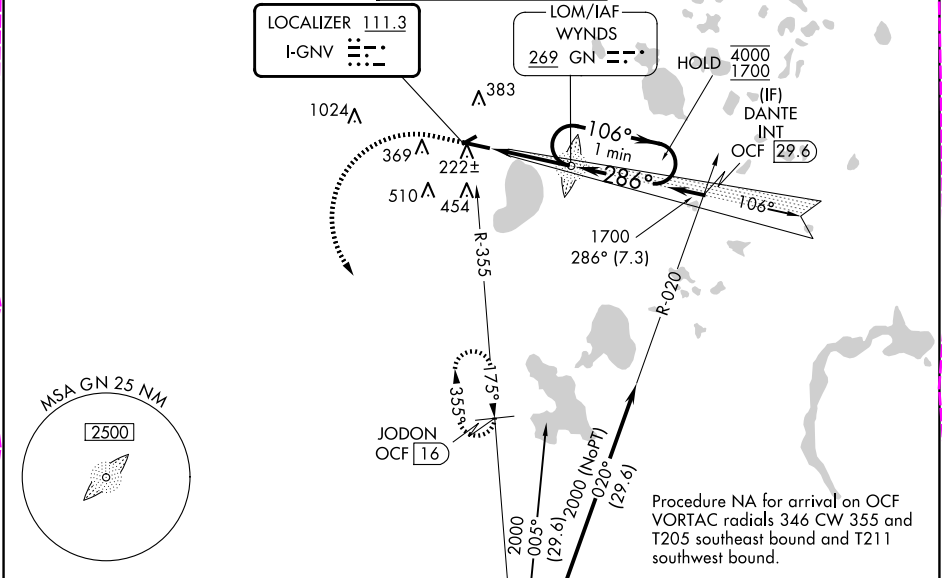
DME required.

⚠ When local altimeter setting not received, use Ocala altimeter setting and increase all DA 81 feet and all MDA 100 feet. Increase S-LOC 29 Cat C and D visibility to RVR 6000, Circling Cat C to 2 SM and Cat D to 2½ SM. For inop ALS when using OCALA altimeter setting, increase S-ILS 29 all Cats visibility to RVR 4500. ** RVR 1800 authorized with use of FD or AP or HUD to DA (NA when using Ocala altimeter setting.)

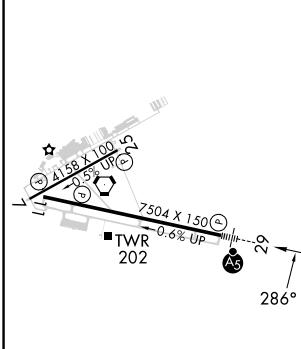
MALSR

MISSED APPROACH: Climb to 1100 then climbing left turn to 2000 on heading 160° and OCF VORTAC R-355 to JODON/16 DME and hold.

| | | | | |
|-----------------------|---|--|-------------------------|-------------------------|
| ATIS 127.15 | JACKSONVILLE APP CON 118.175 338.25 | GAINESVILLE TOWER★ 119.55 (CTAF) 0 353.7 | GND CON 121.7 | UNICOM 122.95 |
|-----------------------|---|--|-------------------------|-------------------------|



| | |
|----------|----------|
| ELEV 151 | TDZE 122 |
|----------|----------|



| | | | | | |
|-------------------|------|------|------|------|------|
| REIL Rwy 11 | | | | | |
| MIRL Rwy 7-25 | | | | | |
| HIRL Rwy 11-29 | | | | | |
| FAF to MAP 4.6 NM | | | | | |
| Knots | 60 | 90 | 120 | 150 | 180 |
| Min:Sec | 4:36 | 3:04 | 2:18 | 1:50 | 1:32 |

| | | | | | |
|------------|----------|---------------------|--------------|--------------------|----------------------------|
| 1100 | 2000 | OCF R-355 | JODON OCF 16 | WYNDGS GN LOM | One Minute Holding Pattern |
| ↑ | hdg 160° | | | 1633 | |
| | | | | | GS 3.00° TCH 54 |
| CATEGORY | | | | | |
| A | | B | | C | |
| S-ILS 29** | | 322/24 | | 200 (200-½) | |
| S-LOC 29 | | 580/24 458 (500-½) | | 580/45 458 (500-¾) | |
| CIRCLING | | 620-1 469 (500-1) | | 700-1 549 (600-1) | |
| | | 760-1¾ 609 (700-1¾) | | 820-2 669 (700-2) | |

GAINESVILLE, FLORIDA
Amdt 13 26MAR20

29°41'N-82°16'W

GAINESVILLE RGNL (GNV)
ILS or LOC RWY 29

SE-3, 10 JUL 2025 to 07 AUG 2025

SE-3, 10 JUL 2025 to 07 AUG 2025


GAINESVILLE, FLORIDA

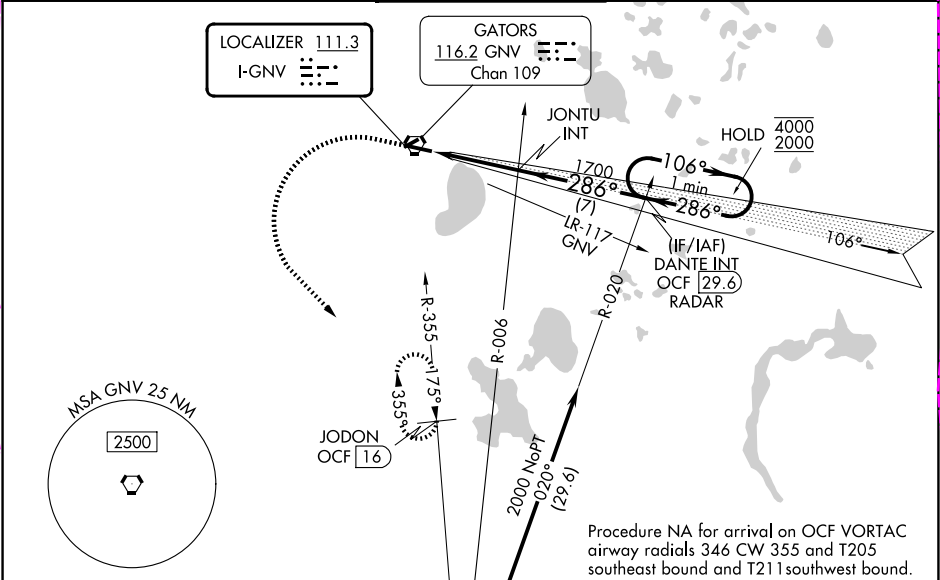
AL-973 (FAA)

25219

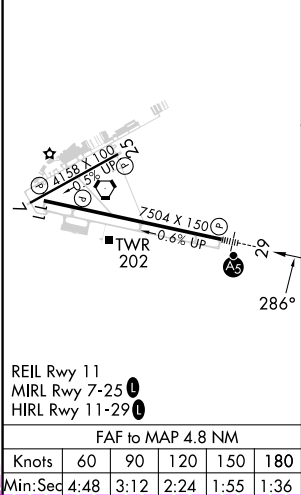
| | | |
|---------------------------|------------------------|---|
| LOC I-GNV 111.3 | APP CRS 286° | Rwy Ldg TDZE 122 Apt Elev 151 |
|---------------------------|------------------------|---|

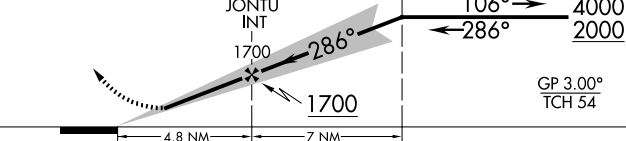
ILS or LOC RWY 29
GAINESVILLE RGNL (GNV)

| | | | | |
|--|--|--|---|---|
| DME required. RADAR required for procedure entry at DANTE. | | | <div>MALSR</div> <div></div> | MISSED APPROACH: Climb to 1100 then climbing left turn to 2000 on heading 140° and OCF VORTAC R-355 to JODON/OCF 16 DME and hold. |
| <div><div><div><div></div><div></div><div></div></div><div><div></div><div></div><div></div></div></div><div>When local altimeter setting not received, use OCF altimeter setting and increase S-ILS 29 DA to 403 feet; increase all MDAs 100 feet and S-LOC 29 visibility Cat C/D to RVR 6000, and Circling visibility Cat C/D ½ SM. For inop ALS when using OCF altimeter setting, increase S-ILS 29 all Cats visibility to RVR 4500. * RVR 1800 authorized with use of FD or AP or HUD to DA (NA when using OCF altimeter setting.)</div></div> | | | | |
| ATIS 127.15 | JACKSONVILLE APP CON 118.175 338.25 | GAINESVILLE TOWER ★ 119.55 (CTAF) 0 353.7 | GND CON 121.7 | UNICOM 122.95 |



| | |
|-----------------|-----------------|
| ELEV 151 | TDZE 122 |
|-----------------|-----------------|



| | | | | | | | | | |
|---|----------------------|--------------|----------------------|--------------------------------|------------------------|--|----------------------|-------------------------------|--|
| 1100 ↑ | 2000 hdg 140° | OCF R-355 | JODON OCF 16 | DANTE INT OCF 29.6 RADAR | | | | One Minute Holding Pattern | |
|  | | | | | | | | | |
| CATEGORY | A | | B | | C | | D | | |
| S-ILS 29 * | 322/24 | | | | 200 (200-½) | | | | |
| S-LOC 29 | 580/24 | | 458 (500-½) | | 580/45 | | 458 (500-¾) | | |
| CIRCLING | 620-1 469 (500-1) | | 700-1 549 (600-1) | | 760-1¾ 609 (700-1¾) | | 820-2 669 (700-2) | | |

GAINESVILLE, FLORIDA

Amdt 14 07AUG25

29°41'N-82°16'W

GAINESVILLE RGNL (GNV)
ILS or LOC RWY 29

SE-3, 07 AUG 2025 to 04 SEP 2025

SE-3, 07 AUG 2025 to 04 SEP 2025