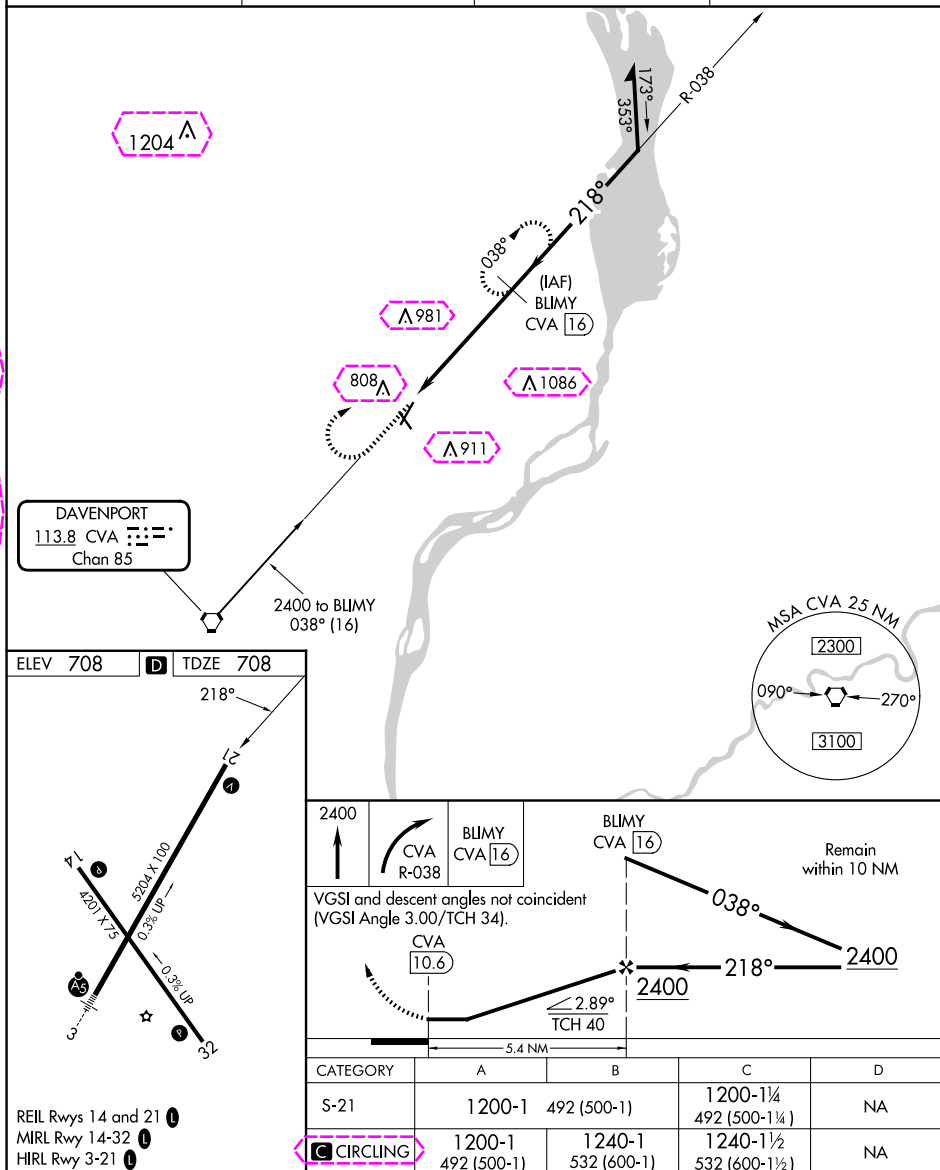


VORTAC CVA <b>113.8</b> Chan 85	APP CRS <b>218°</b>	Rwy Ldg <b>5204</b> TDZE <b>708</b> Apt Elev <b>708</b>
---------------------------------------	------------------------	---

VOR/DME RWY 21  
CLINTON MUNI (CWI)

T	Rwy 21 helicopter visibility reduction below ¾ SM NA.		MISSED APPROACH: Climb to 2400 then right turn via CVA R-038 to BLIMY 16 DME and hold.	
	AWOS-3PT 125.525	QUAD CITY APP CON ★ 125.95 257.8	CLNC DEL 118.5 0	CTAF 122.8



CLINTON, IOWA  
Amdt 9C 13AUG20

41°50'N-90°20'W

CLINTON MUNI (CWI)  
VOR/DME RWY 21

NC-3, 10 JUL 2025 to 07 AUG 2025

NC-3, 10 JUL 2025 to 07 AUG 2025

CLINTON, IOWA

AL-972 (FAA)

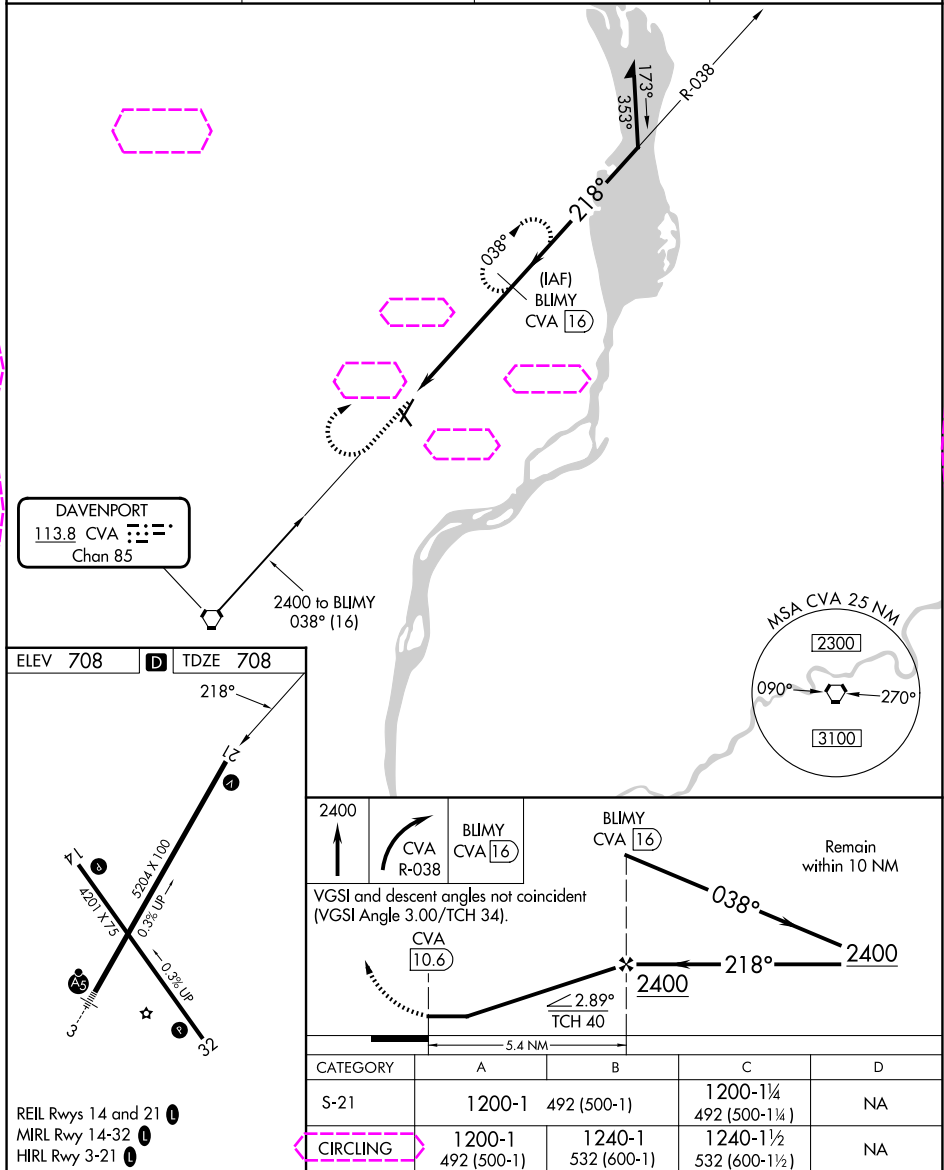
25219

VORTAC CVA <b>113.8</b> Chan <b>85</b>	APP CRS <b>218°</b>	Rwy Ldg TDZE Apt Elev	<b>5204</b> <b>708</b> <b>708</b>
--	------------------------	-----------------------------	---

# VOR/DME RWY 21

CLINTON MUNI (CWI)

Rwy 21 helicopter visibility reduction below ¾ SM NA.		MISSED APPROACH: Climb to 2400 then right turn via R-038 to BLIMY 16 DME and hold.	
AWOS-3PT <b>125.525</b>	QUAD CITY APP CON ★ <b>125.95 257.8</b>	CLNC DEL <b>118.5 0</b>	UNICOM <b>123.075 (CTAF)</b>



CLINTON, IOWA

Amdt 9C 13AUG20

41°50'N-90°20'W

# VOR/DME RWY 21

CLINTON MUNI (CWI)

NC-3, 07 AUG 2025 to 04 SEP 2025

NC-3, 07 AUG 2025 to 04 SEP 2025