

RNAV (GPS) RWY 3

CLINTON, IOWA

AL-972 (FAA)

25219

WAAS CH <b>69610</b> <b>W03A</b>	APP CRS <b>030°</b>	Rwy Ldg TDZE Apt Elev <b>5204</b> <b>700</b> <b>708</b>
--	------------------------	--

# RNAV (GPS) RWY 3

CLINTON MUNI (CWI)

**⚠**

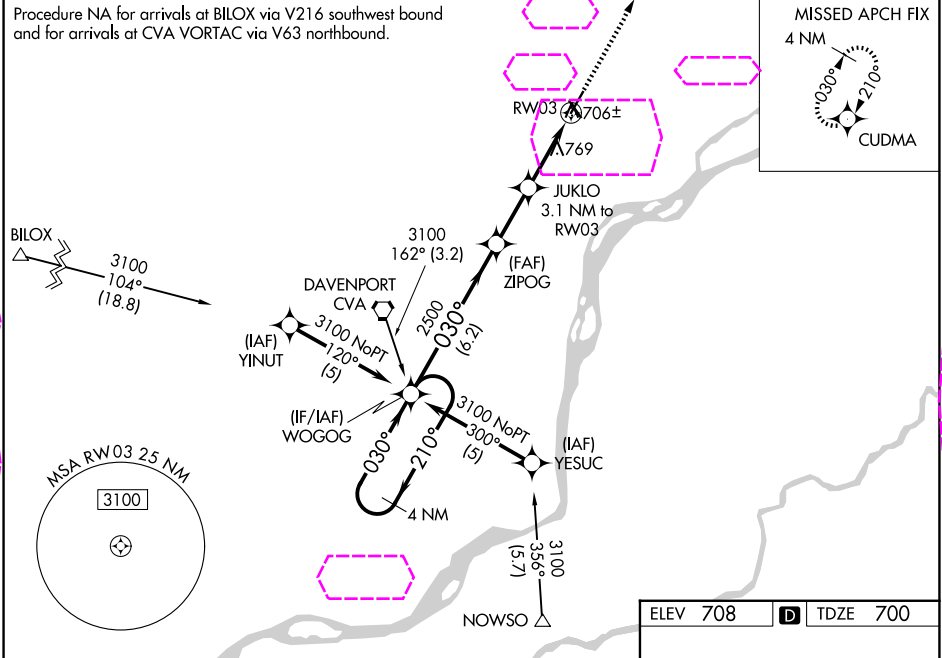
For uncompensated Baro-VNAV systems, LNAV/VNAV NA below -16°C (4°F) or above 54°C (130°F). DME/DME RNP-0.3 NA. Baro-VNAV and VDP NA when using Davenport altimeter setting. When local altimeter setting not received, use Davenport altimeter setting and increase all DA 47 feet and all MDA 40 feet.

MALSR

**A5**

MISSED APPROACH: Climb to 2500 direct CUDMA and hold.

AWOS-3PT <b>125.525</b>	QUAD CITY APP CON ★ <b>125.95 257.8</b>	CLNC DEL <b>118.50</b>	UNICOM <b>123.075 (CTAF)</b>
----------------------------	--	---------------------------	---------------------------------



4 NM Holding Pattern WOGOG

3100 ← 210° 030° →

GP 3.00° TCH 56

2500

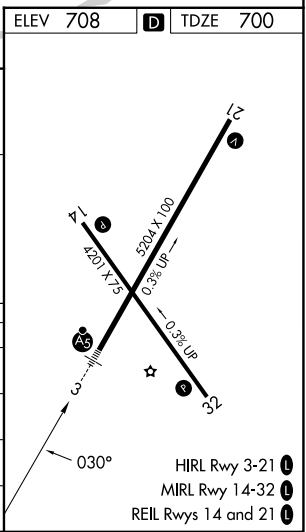
JUKLO 3.1 NM to RW03

\*1.1 NM to RW03

\*1740

6.2 NM 2.3 NM 2 NM 1.1 NM

CATEGORY	A	B	C	D
LPV DA	900-1/2	200 (200-1/2)		NA
LNAV/VNAV DA	1039-3/4	339 (400-3/4)		NA
LNAV MDA	1020-1/2	320 (400-1/2)		NA
CIRCLING	1140-1 432 (500-1)	1240-1 532 (600-1)	1240-1 1/2 532 (600-1 1/2)	NA



CLINTON, IOWA  
Orig-B 13AUG20

41°50'N-90°20'W

## CLINTON MUNI (CWI) RNAV (GPS) RWY 3

NC-3, 07 AUG 2025 to 04 SEP 2025

NC-3, 07 AUG 2025 to 04 SEP 2025