

CLINTON, IOWA


AL-972 (FAA)

25163

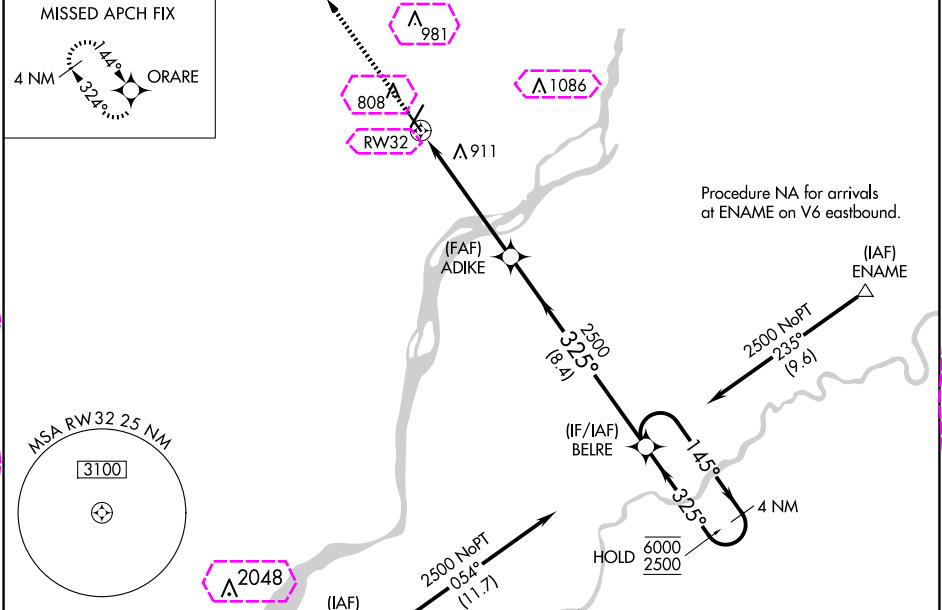
WAAS CH 77629 W32A	APP CRS 325°	Rwy Ldg TDZE 697 Apt Elev 708
--	------------------------	---

RNAV (GPS) RWY 32

CLINTON MUNI (CWI)

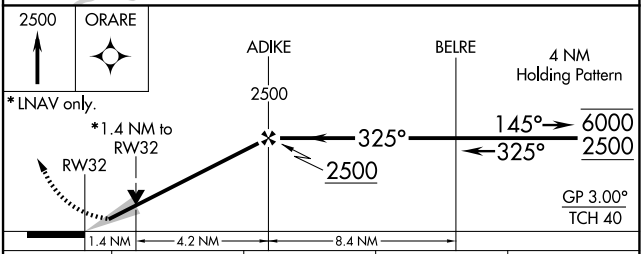
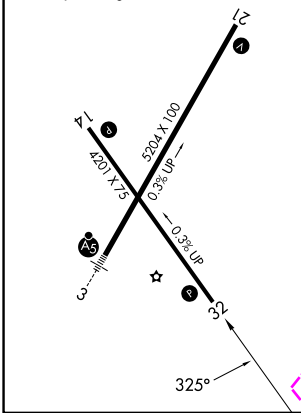
RNP APCH.	MISSED APPROACH: Climb to 2500 direct ORARE and hold.
 For uncompensated Baro-VNAV systems, LNAV/VNAV NA below -16°C or above 54°C.	


AWOS-3PT 125.525	QUAD CITY APP CON ★ 125.95 257.8	CLNC DEL 118.5 0	CTAF 122.8
----------------------------	--	----------------------------	----------------------



ELEV 708	D	TDZE 697
-----------------	----------	-----------------

REIL Rwys 14 and 21 **0**
MIRL Rwy 14-32 **0**
HIRL Rwy 3-21 **0**



CATEGORY	A	B	C	D
LPV DA	947-1 250 (300-1)			NA
LNAV/VNAV DA	1205-1 ³ / ₈ 508 (500-1 ³ / ₈)			NA
LNAV MDA	1180-1	483 (500-1)	1180-1 ³ / ₈ 483 (500-1 ³ / ₈)	NA
 CIRCLING	1180-1 472 (500-1)	1240-1 532 (600-1)	1240-1 ¹ / ₂ 532 (600-1 ¹ / ₂)	NA

CLINTON, IOWA
Amdt 1B 21MAY20

41°50'N-90°20'W

RNAV (GPS) RWY 32

CLINTON MUNI (CWI)

NC-3, 10 JUL 2025 to 07 AUG 2025

NC-3, 10 JUL 2025 to 07 AUG 2025

