

CLINTON, IOWA

AL-972 (FAA)

25163

WAAS CH <b>86829</b> <b>W21A</b>	APP CRS <b>210°</b>	Rwy Ldg TDZE Apt Elev <b>708</b>
--	------------------------	--

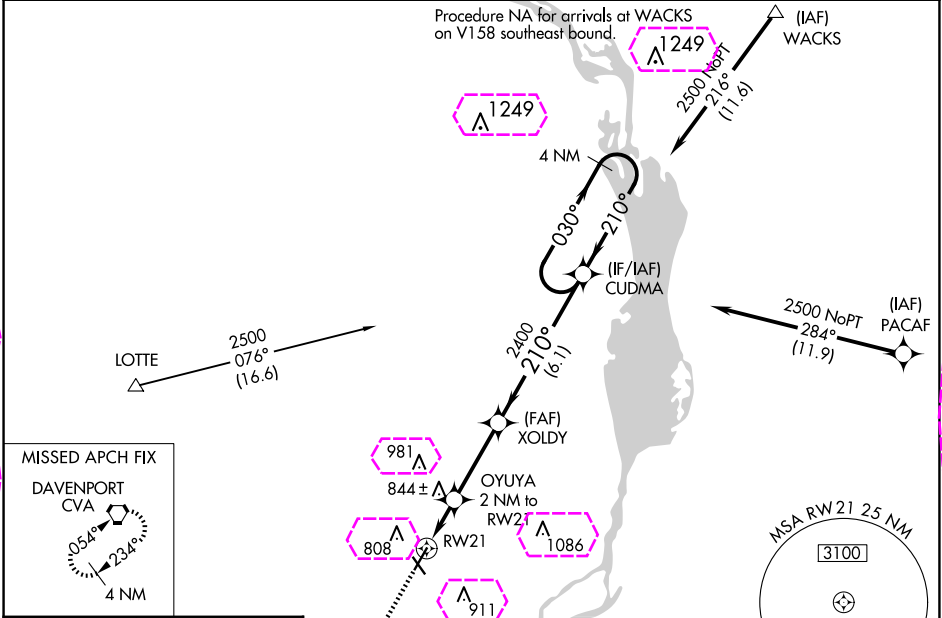
# RNAV (GPS) RWY 21

CLINTON MUNI (CWI)

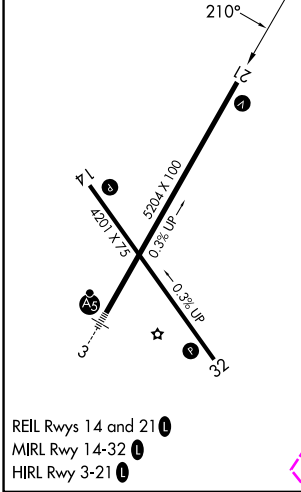
**⚠** Rwy 21 helicopter visibility reduction below ¾ SM NA. Baro-VNAV NA when using Davenport altimeter setting. For uncompensated Baro-VNAV systems, LNAV/VNAV NA below -16°C (4°F) or above 54°C (130°F). DME/DME RNP-0.3 NA. When local altimeter setting not received, use Davenport altimeter setting: increase all DA 47 feet and all MDA 60 feet. Increase LNAV Cat C visibility ¼ mile.

**MISSED APPROACH:** Climb to 3000 direct WIKES and on track 234° to CVA VORTAC and hold.

AWOS-3PT <b>125.525</b>	QUAD CITY APP CON ★ <b>125.95 257.8</b>	CLNC DEL <b>118.5 0</b>	CTAF <b>122.8</b>
----------------------------	--	----------------------------	----------------------



ELEV 708	D	TDZE 708
----------	---	----------



3000	WIKES	tr 234°	CVA	VGSI and RNAV glidepath not coincident (VGSI Angle 3.00°/TCH 34).
*LNAV only	OYUYA 2 NM to RW21	XOLDY	CUDMA	4 NM Holding Pattern
RW21	1380*	2400	2500	GP 3.00° TCH 40
2 NM	3.2 NM	6.1 NM		
CATEGORY	A	B	C	D
LPV DA	958-1	250 (300-1)		NA
LNAV/VNAV DA	958-1	250 (300-1)		NA
LNAV MDA	1100-1	392 (400-1)	1100-1½ 392 (400-1½)	NA
<b>CIRCLING</b>	1140-1 432 (500-1)	1240-1 532 (600-1)	1240-1½ 532 (600-1½)	NA

CLINTON, IOWA  
Amdt 1B 13AUG20

41°50'N-90°20'W

# RNAV (GPS) RWY 21

CLINTON MUNI (CWI)

NC-3, 10 JUL 2025 to 07 AUG 2025

NC-3, 10 JUL 2025 to 07 AUG 2025

CLINTON, IOWA

AL-972 (FAA)

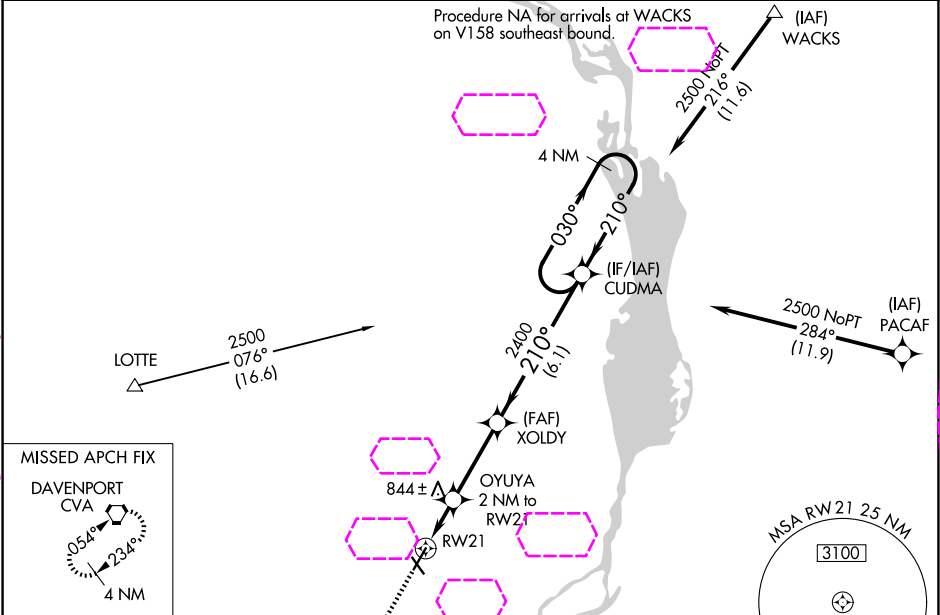
25219

WAAS CH <b>86829</b> <b>W21A</b>	APP CRS <b>210°</b>	Rwy Ldg TDZE Apt Elev	<b>5204</b> <b>708</b> <b>708</b>
--	------------------------	-----------------------------	---

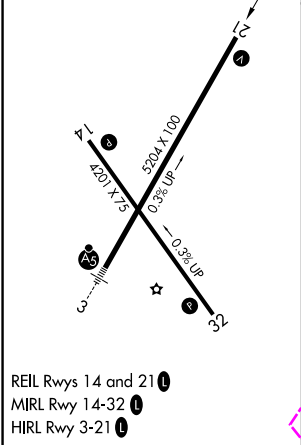
**RNAV (GPS) RWY 21**  
CLINTON MUNI (CWI)

<b>⚠</b> <b>⚠</b>	Rwy 21 helicopter visibility reduction below ¾ SM NA. Baro-VNAV NA when using Davenport altimeter setting. For uncompensated Baro-VNAV systems, LNAV/VNAV NA below -16°C (4°F) or above 54°C (130°F). DME/DME RNP-0.3 NA. When local altimeter setting not received, use Davenport altimeter setting: increase all DA 47 feet and all MDA 60 feet. Increase LNAV Cat C visibility ¼ mile.	<b>MISSED APPROACH:</b> Climb to 3000 direct WIKES and on track 234° to CVA VORTAC and hold.
----------------------	---	---

AWOS-3PT <b>125.525</b>	QUAD CITY APP CON ★ <b>125.95 257.8</b>	CLNC DEL <b>118.5 0</b>	UNICOM <b>123.075 (CTAF)</b>
----------------------------	--	----------------------------	---------------------------------



ELEV 708	<b>D</b>	TDZE 708
----------	----------	----------



3000	WIKES	tr 234°	CVA	VGSI and RNAV glidepath not coincident (VGSI Angle 3.00°/TCH 34).
*LNAV only	OYUYA 2 NM to RW21	XOLDY	CUDMA	4 NM Holding Pattern
RW21	1380*	2400	2400	GP 3.00° TCH 40
2 NM 3.2 NM 6.1 NM				
CATEGORY	A	B	C	D
LPV DA	958-1	250 (300-1)		NA
LNAV/VNAV DA	958-1	250 (300-1)		NA
LNAV MDA	1100-1	392 (400-1)	1100-1½ 392 (400-1½)	NA
<b>CIRCLING</b>	1140-1 432 (500-1)	1240-1 532 (600-1)	1240-1½ 532 (600-1½)	NA

CLINTON, IOWA  
Amdt 1B 13AUG20

41°50'N-90°20'W

CLINTON MUNI (CWI)  
**RNAV (GPS) RWY 21**

NC-3, 07 AUG 2025 to 04 SEP 2025

NC-3, 07 AUG 2025 to 04 SEP 2025