

CLINTON, IOWA

AL-972 (FAA)

25163

WAAS CH 86729 W14A	APP CRS 144°	Rwy Ldg TDZE Apt Elev	4200 701 708
--	------------------------	-----------------------------	---

RNAV (GPS) RWY 14

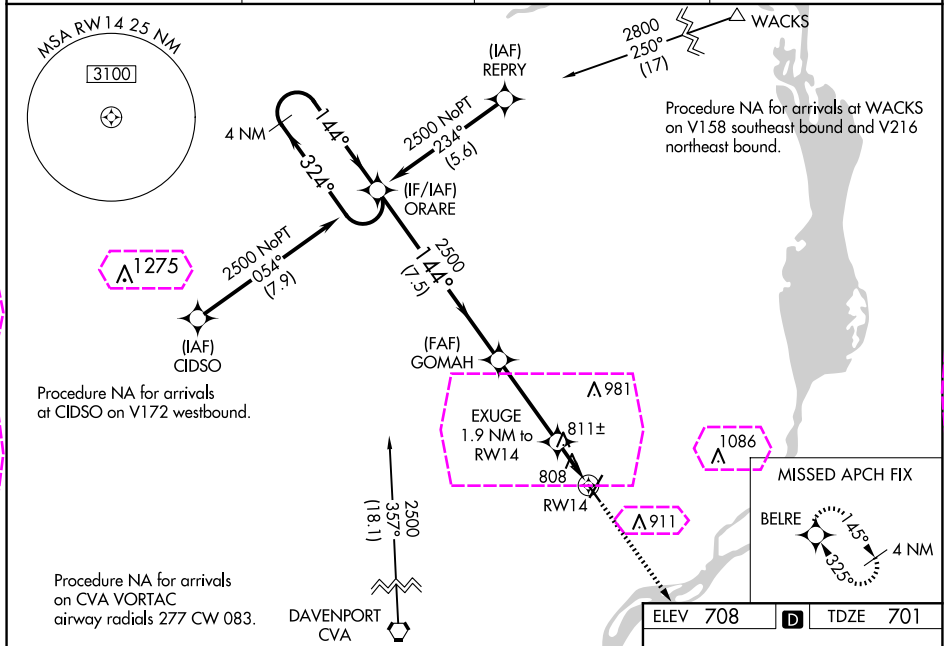
CLINTON MUNI (CWI)

⚠

Rwy 14 helicopter visibility reduction below $\frac{3}{4}$ SM NA. Baro-VNAV NA when using Davenport altimeter setting. For uncompensated Baro-VNAV systems, LNAV/VNAV NA below -16°C (4°F) or above 54°C (130°F). DME/DME RNP-0.3 NA. When local altimeter setting not received, use Davenport altimeter setting and increase all DA 47 feet and all MDA 60 feet; increase LNAV visibility Cat C $\frac{1}{4}$ mile.

MISSED APPROACH:
Climb to 2500 direct
BELRE and hold.

AWOS-3PT 125.525	QUAD CITY APP CON ★ 125.95 257.8	CLNC DEL 118.5 0	CTAF 122.8
----------------------------	--	----------------------------	----------------------



4 NM Holding Pattern

ORARE

GOMAH

2500

EXUGE 1.9 NM to RW14

RW14

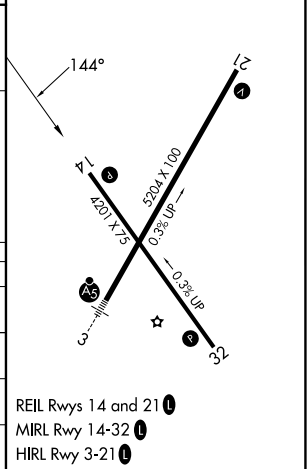
*1340

*LNAV only

GP 3.00° TCH 40

7.5 NM 3.6 NM 1.9 NM

CATEGORY	A	B	C	D
LPV DA	951-1	250 (300-1)		NA
LNAV/VNAV DA	968-1	267 (300-1)		NA
LNAV MDA	1080-1	379 (400-1)		NA
CIRCLING	1140-1 432 (500-1)	1240-1 532 (600-1)	1240-1½ 532 (600-1½)	NA



NC-3, 10 JUL 2025 to 07 AUG 2025

NC-3, 10 JUL 2025 to 07 AUG 2025

CLINTON, IOWA

Amdt 1B 13AUG20

41°50'N-90°20'W

RNAV (GPS) RWY 14

CLINTON MUNI (CWI)

CLINTON, IOWA

AL-972 (FAA)

25219

WAAS CH 86729 W14A	APP CRS 144°	Rwy Ldg TDZE Apt Elev	4200 701 708
--	------------------------	-----------------------------	---

RNAV (GPS) RWY 14

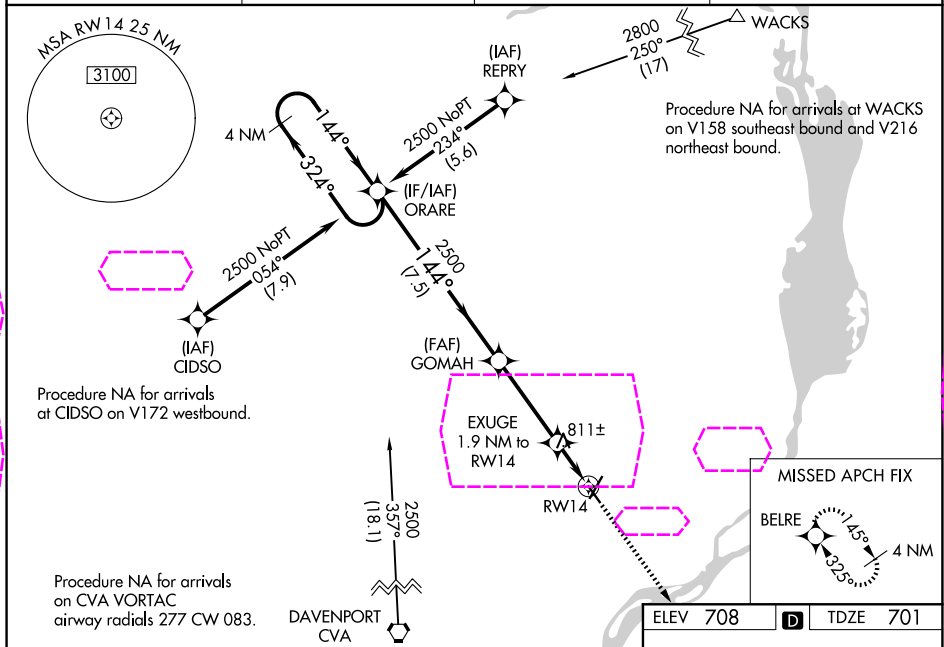
CLINTON MUNI (CWI)

⚠

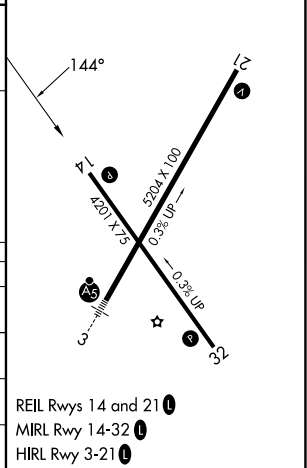
Rwy 14 helicopter visibility reduction below $\frac{3}{4}$ SM NA. Baro-VNAV NA when using Davenport altimeter setting. For uncompensated Baro-VNAV systems, LNAV/VNAV NA below -16°C (4°F) or above 54°C (130°F). DME/DME RNP-0.3 NA. When local altimeter setting not received, use Davenport altimeter setting and increase all DA 47 feet and all MDA 60 feet; increase LNAV visibility Cat C $\frac{1}{4}$ mile.

MISSED APPROACH:
Climb to 2500 direct
BELRE and hold.

AWOS-3PT 125.525	QUAD CITY APP CON ★ 125.95 257.8	CLNC DEL 118.5 0	UNICOM 123.075 (CTAF)
----------------------------	--	----------------------------	---------------------------------



4 NM Holding Pattern		ORARE	GOMAH	2500	BELRE
2500		←324°	→144°	2500	
GP 3.00°		TCH 40			
		7.5 NM	3.6 NM	1.9 NM	
CATEGORY	A	B	C	D	
LPV DA		951-1 250 (300-1)		NA	
LNAV/VNAV DA		968-1 267 (300-1)		NA	
LNAV MDA		1080-1 379 (400-1)		NA	
CIRCLING	1140-1 432 (500-1)	1240-1 532 (600-1)	1240-1½ 532 (600-1½)	NA	



CLINTON, IOWA
Amdt 1B 13AUG20

41°50'N-90°20'W

CLINTON MUNI (CWI)
RNAV (GPS) RWY 14

NC-3, 07 AUG 2025 to 04 SEP 2025

NC-3, 07 AUG 2025 to 04 SEP 2025