

CLINTON, IOWA

AL-972 (FAA)

25163

LOC/DME I-FNO 109.7 Chan 34	APP CRS 030°	Rwy Ldg TDZE 700 Apt Elev 708
---	------------------------	---

ILS or LOC RWY 3

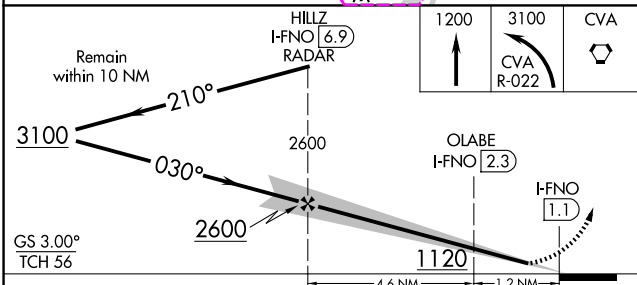
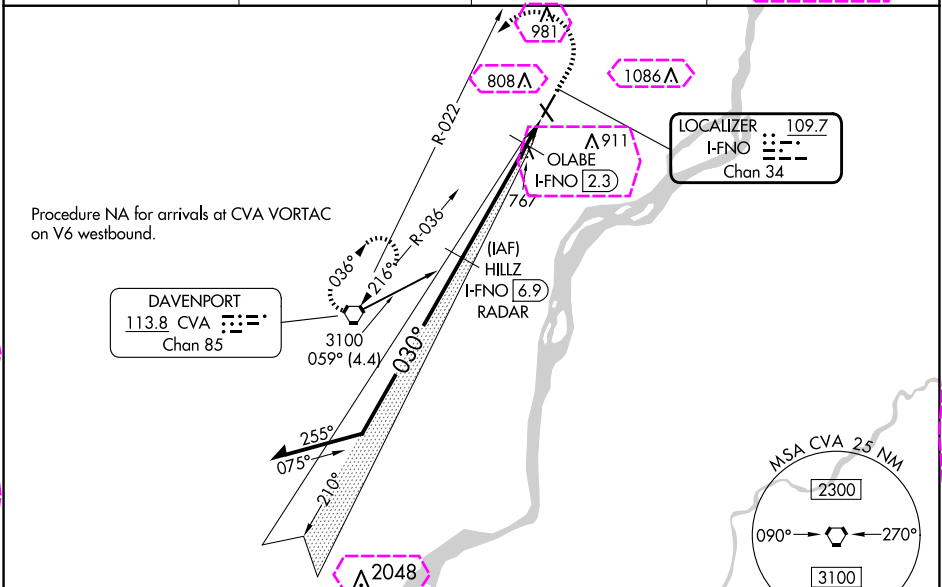
CLINTON MUNI (CWI)

DME or RADAR required for LOC only.

MALSRR

MISSED APPROACH: Climb to 1200 then climbing left turn to 3100 on CVA VORTAC R-022 to CVA VORTAC and hold, continue climb-in-hold to 3100.

AWOS-3PT 125.525	QUAD CITY APP CON ★ 125.95 257.8	CLNC DEL 118.5	CTAF 122.8
----------------------------	--	--------------------------	----------------------



CATEGORY	A	B	C	D
S-ILS 3	900-½ 200 (200-½)			NA
S-LOC 3	1120-½	420 (500-½)	1120-¾ 420 (500-¾)	NA
CIRCLING	1140-1 432 (500-1)	1240-1 532 (600-1)	1240-1½ 532 (600-1½)	NA
OLABE FIX MINIMUMS				
S-LOC 3	1020-½ 320 (400-½)			NA
CIRCLING	1140-1 432 (500-1)	1240-1 532 (600-1)	1240-1½ 532 (600-1½)	NA

ELEV 708 D TDZE 700

REIL Rwy 14 and 21
MIRL Rwy 14-32
HIRL Rwy 3-21

Diagram showing the intersection of Runway 3 and Runway 14/32. It includes the 030° approach path and the 030° UP path. The diagram is labeled 'FAF to MAP 5.8 NM'.

Knots	60	90	120	150	180
Min:Sec	5:48	3:52	2:54	2:19	1:56

NC-3, 10 JUL 2025 to 07 AUG 2025

NC-3, 10 JUL 2025 to 07 AUG 2025

CLINTON, IOWA
Amdt 6 20APR23

41°50'N-90°20'W

ILS or LOC RWY 3

CLINTON, IOWA

AL-972 (FAA)

25219

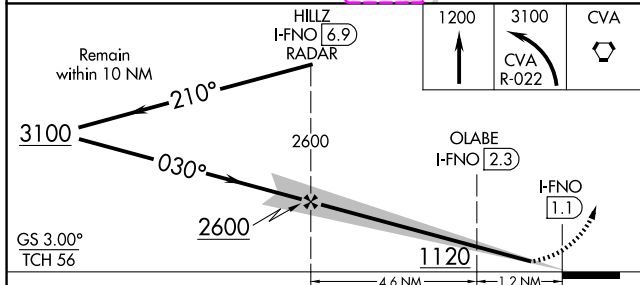
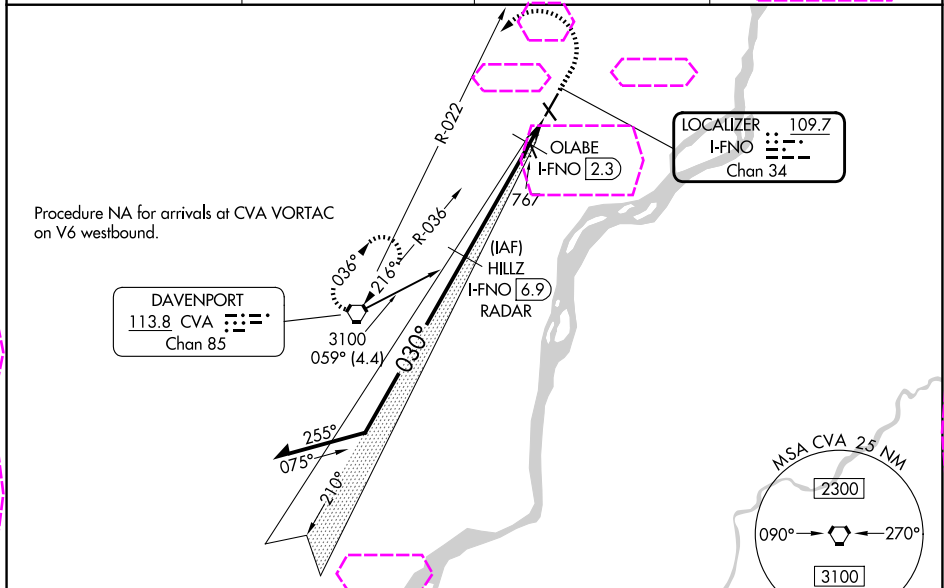
LOC/DME I-FNO 109.7 Chan 34	APP CRS 030°	Rwy Ldg TDZE 700 Apt Elev 708
---	------------------------	---

ILS or LOC RWY 3

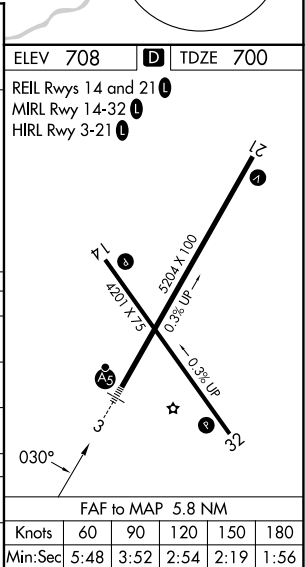
CLINTON MUNI (CWI)

DME or RADAR required for LOC only.	MALSR 	MISSED APPROACH: Climb to 1200 then climbing left turn to 3100 on CVA VORTAC R-022 to CVA VORTAC and hold, continue climb-in-hold to 3100.
-------------------------------------	-----------	--

AWOS-3PT 125.525	QUAD CITY APP CON ★ 125.95 257.8	CLNC DEL 118.5 0	UNICOM 123.075 (CTAF)
----------------------------	--	----------------------------	---------------------------------



CATEGORY	A	B	C	D
S-ILS 3	900-½ 200 (200-½)			NA
S-LOC 3	1120-½	420 (500-½)	1120-¾ 420 (500-¾)	NA
CIRCLING	1140-1 432 (500-1)	1240-1 532 (600-1)	1240-1½ 532 (600-1½)	NA
OLABE FIX MINIMUMS				
S-LOC 3	1020-½ 320 (400-½)			NA
CIRCLING	1140-1 432 (500-1)	1240-1 532 (600-1)	1240-1½ 532 (600-1½)	NA



CLINTON, IOWA
Amdt 6 20APR23

41°50'N-90°20'W

ILS or LOC RWY 3

CLINTON MUNI (CWI)

NC-3, 07 AUG 2025 to 04 SEP 2025

NC-3, 07 AUG 2025 to 04 SEP 2025