

KEOKUK, IOWA

AL-970 (FAA)

23166

WAAS CH 97304 W08A	APP CRS 084°	Rwy Idg 5500 TDZE 672 Apt Elev 672
--	------------------------	---

RNAV (GPS) RWY 8

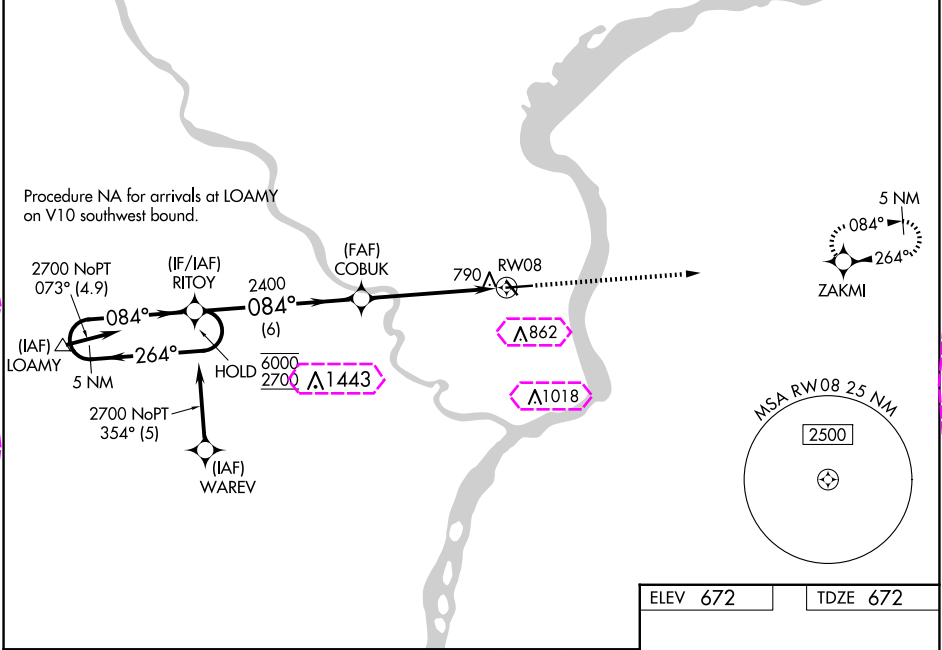
KEOKUK MUNI (EOK)

RNP APCH - GPS.

⚠ Circling to Rwy 32 NA at night. Baro-VNAV and VDP NA when using Burlington altimeter setting. For uncompensated Baro-VNAV systems, LNAV/VNAV NA below -16°C or above 54°C. When local altimeter setting not received, use Burlington altimeter setting: increase LPV DA to 978 feet; LNAV/VNAV DA to 1116; increase all MDAs 60 feet and visibility Cat C ½ SM.

MISSED APPROACH: Climb to 2700 direct ZAKMI and hold.

AWOS-3 118.375	KANSAS CITY CENTER 126.225 317.775	UNICOM 122.8 (CTAF) 1
--------------------------	--	---------------------------------



5 NM Holding Pattern		RITOY		2700 ZAKMI	
6000 ← 264°		← 084°		↑	
2700		084°		ZAKMI	
GP 3.00°		084°		1 NM to RW08	
TCH 40		2400		RW08	
		6 NM		4.2 NM	
		COBUK		1 NM	
		2400			
CATEGORY	A	B	C	D	
LPV DA	922-1 250 (300-1)			NA	
LNAV/VNAV DA	1060-1½ 388 (400-1½)			NA	
LNAV MDA	1040-1 368 (400-1)			NA	
CIRCLING	1180-1 508 (600-1)	1220-1 548 (600-1)	1220-1½ 548 (600-1½)	NA	

ELEV 672 TDZE 672

REIL Rwy 8, 14, and 32 1
MIRL Rwy 8-26 and 14-32 1

KEOKUK, IOWA

Orig-D 15JUN23

40°28'N-91°26'W

RNAV (GPS) RWY 8

KEOKUK MUNI (EOK)

NC-3, 10 JUL 2025 to 07 AUG 2025

NC-3, 10 JUL 2025 to 07 AUG 2025

KEOKUK, IOWA

AL-970 (FAA)

25219

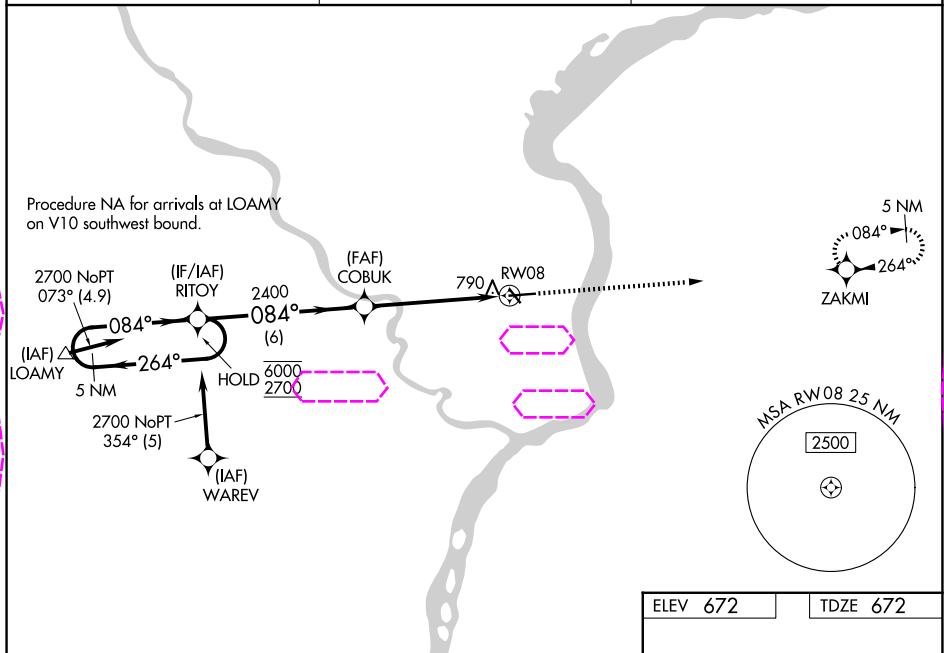
WAAS CH 97304 W08A	APP CRS 084°	Rwy Ldg 5500 TDZE 672 Apt Elev 672
--	------------------------	---

RNAV (GPS) RWY 8

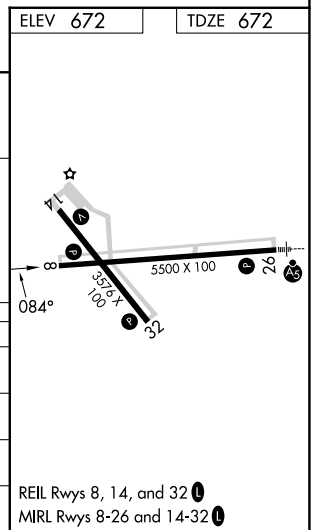
KEOKUK MUNI (EOK)

RNP APCH - GPS.	MISSED APPROACH: Climb to 2700 direct ZAKMI and hold.
-----------------	--

AWOS-3 118.375	KANSAS CITY CENTER 126.225 317.775	UNICOM 122.8 (CTAF) 1
--------------------------	--	---------------------------------



5 NM Holding Pattern		RITOY	COBUK	2700	ZAKMI
6000 2700		264°	084°	2400	1 NM to RW08
GP 3.00° TCH 40		6 NM	4.2 NM	1 NM	
CATEGORY	A	B	C	D	
LPV DA	922-1 250 (300-1)			NA	
LNAV/VNAV DA	1060-1½ 388 (400-1½)			NA	
LNAV MDA	1040-1 368 (400-1)			NA	
CIRCLING	1180-1 508 (600-1)	1220-1 548 (600-1)	1220-1½ 548 (600-1½)	NA	



KEOKUK, IOWA
Orig-D 15JUN23

40°28'N-91°26'W

RNAV (GPS) RWY 8

NC-3, 07 AUG 2025 to 04 SEP 2025

NC-3, 07 AUG 2025 to 04 SEP 2025