

KEOKUK, IOWA

AL-970 (FAA)

23166

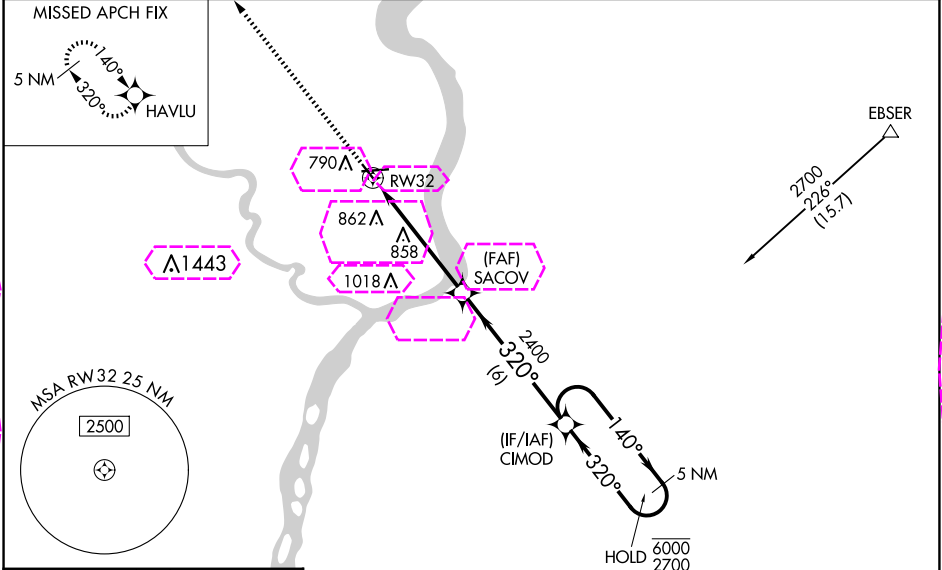
WAAS CH 40005 W32A	APP CRS 320°	Rwy Idg 3576 TDZE 672 Apt Elev 672
--	------------------------	---

RNAV (GPS) RWY 32

KEOKUK MUNI (EOK)

RNP APCH - GPS. ▼ Procedure NA at night. Rwy 32 helicopter visibility reduction below 1 SM NA. ▲ Baro-VNAV NA when using Burlington altimeter setting. For uncompensated Baro-VNAV systems, LNAV/VNAV NA below -16°C or above 54°C. When local altimeter setting not received, use Burlington altimeter setting: increase LPV DA to 978 feet; increase LNAV/VNAV DA to 1220 feet and all visibilities ¼ SM. Increase all MDAs 60 feet visibility Cat C visibility ¼ SM.	MISSED APPROACH: Climb to 2400 direct HAVLU and hold.
---	---

AWOS-3 118.375	KANSAS CITY CENTER 126.225 317.775	UNICOM 122.8 (CTAF) 1
--------------------------	--	---------------------------------



ELEV 672	TDZE 672
----------	----------

2400 HAVLU

VGSI and RNAV glidepath not coincident (VGSI Angle 3.00/TCH 45).

2400

SACOV

2400

CIMOD

5 NM Holding Pattern

140° → 6000 / 2700

← 320°

GP 3.00° TCH 40

5.2 NM

6 NM

CATEGORY	A	B	C	D
LPV DA	922-1 250 (300-1)			NA
LNAV/VNAV DA	1164-1⅓ 492 (500-1⅓)			NA
LNAV MDA	1160-1 488 (500-1)		1160-1⅓ 488 (500-1⅓)	NA
CIRCLING	1180-1 508 (600-1)	1220-1 548 (600-1)	1220-1½ 548 (600-1½)	NA

FEIL Rwy 8, 14, and 32 1

MIRL Rwy 8-26 and 14-32 1

KEOKUK, IOWA

Orig-D 15JUN23

40°28'N-91°26'W

KEOKUK MUNI (EOK)

RNAV (GPS) RWY 32

KEOKUK, IOWA

AL-970 (FAA)

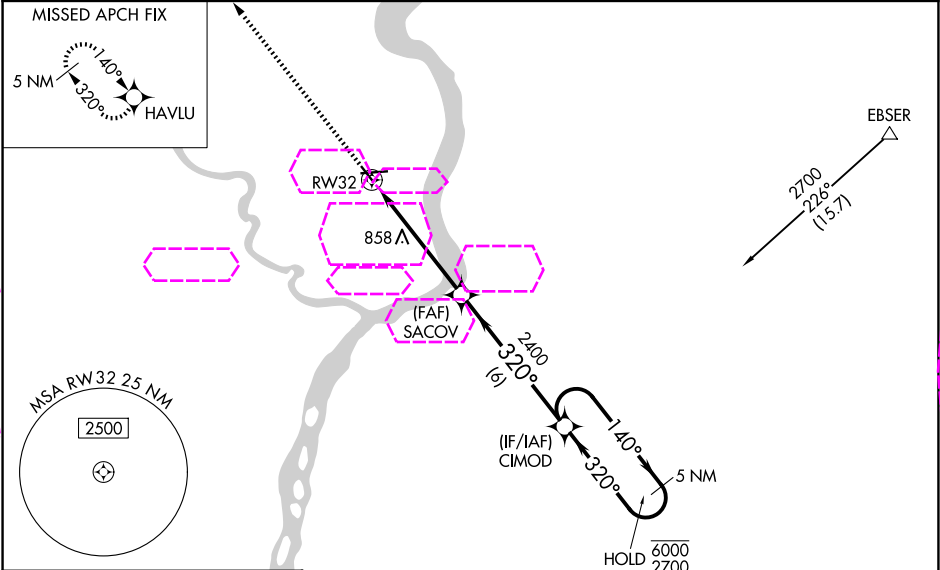
25219

WAAS CH 40005 W32A	APP CRS 320°	Rwy Ldg TDZE Apt Elev	3576 672 672
--	------------------------	-----------------------------	---

RNAV (GPS) RWY 32
KEOKUK MUNI (EOK)

RNP APCH - GPS. ▼ Procedure NA at night. Rwy 32 helicopter visibility reduction below 1 SM NA. ▲ Baro-VNAV NA when using Burlington altimeter setting. For uncompensated Baro-VNAV systems, LNAV/VNAV NA below -16°C or above 54°C. When local altimeter setting not received, use Burlington altimeter setting: increase LPV DA to 978 feet; increase LNAV/VNAV DA to 1220 feet and all visibilities ¼ SM. Increase all MDAs 60 feet visibility Cat C visibility ¼ SM.	MISSED APPROACH: Climb to 2400 direct HAVLU and hold.
---	---

AWOS-3 118.375	KANSAS CITY CENTER 126.225 317.775	UNICOM 122.8 (CTAF) 1
--------------------------	--	---------------------------------



ELEV 672	TDZE 672
----------	----------

FEIL Rwys 8, 14, and 32

MIRL Rwys 8-26 and 14-32

2400
↑

VGSI and RNAV glidepath not coincident
(VGSI Angle 3.00/TCH 45).

RW32

5.2 NM

SACOV

2400

6 NM

CIMOD

5 NM Holding Pattern

140° → 6000
← 320° 2700

GP 3.00°
TCH 40

CATEGORY	A	B	C	D
LPV DA	922-1 250 (300-1)			NA
LNAV/VNAV DA	1164-1 3/8 492 (500-1 3/8)			NA
LNAV MDA	1160-1 488 (500-1)		1160-1 3/8 488 (500-1 3/8)	NA
CIRCLING	1180-1 508 (600-1)	1220-1 548 (600-1)	1220-1 1/2 548 (600-1 1/2)	NA

KEOKUK, IOWA
Orig-D 15JUN23

40°28'N-91°26'W

KEOKUK MUNI (EOK)
RNAV (GPS) RWY 32

NC-3, 07 AUG 2025 to 04 SEP 2025

NC-3, 07 AUG 2025 to 04 SEP 2025