

RNAV (GPS) RWY 26
KEOKUK MUNI (EOK)

WAAS CH 45505 W26A	APP CRS 264°	Rwy Ldg 5500 TDZE 671 Apt Elev 672
--	------------------------	---

RNP APCH - GPS.

⚠ Circling Rwy 32 NA at night. Baro-VNAV and VDP NA when using Burlington altimeter setting. Inop table does not apply to LPV. For uncompensated Baro-VNAV systems, LNAV/VNAV NA below -21°C or above 54°C. When local altimeter setting not received, use Burlington altimeter setting and increase LPV DA to 927 feet, increase LNAV/VNAV DA to 1005 feet, increase all MDAs 60 feet, and Circling visibility Cat C ¼ SM. For inop ALS, increase LNAV/VNAV all Cats visibility to ¾ SM and LNAV all Cats visibility to 1 SM. For inop ALS, when using Burlington altimeter setting, increase LNAV/VNAV all Cats and LNAV Cats A and B visibility to 1 SM.

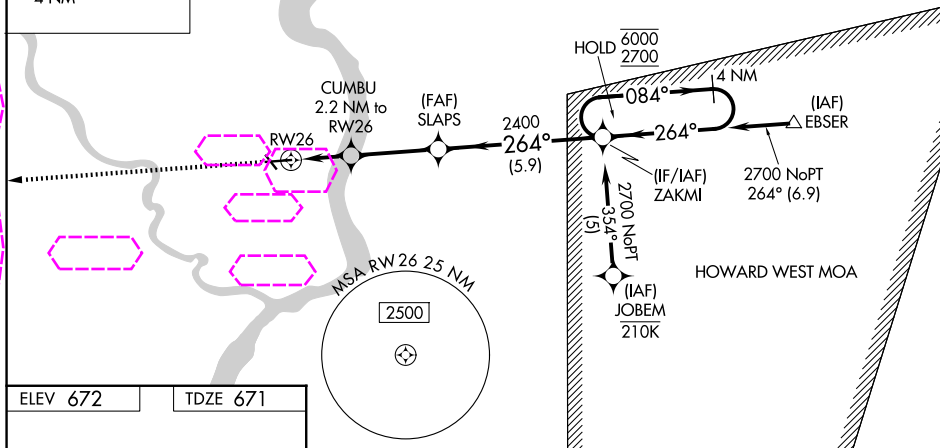
MALSR



MISSED APPROACH:
Climb to 2700 direct
RITTOY and hold.

AWOS-3 118.375	KANSAS CITY CENTER 126.225 317.775	UNICOM 122.8 (CTAF) 0
--------------------------	--	---------------------------------

MISSED APCH FIX



REIL Rwy 8, 14, and 32 **L**
MIRL Rwy 8-26 and 14-32 **L**

CATEGORY	A	B	C	D
LPV DA	871- ³ / ₄	200 (200- ³ / ₄)		NA
LNAV/VNAV DA	949- ³ / ₄	278 (300- ³ / ₄)		NA
LNAV MDA	1040- ³ / ₄	369 (400- ³ / ₄)		NA
CIRCLING	1180-1 508 (600-1)	1220-1 548 (600-1)	1220-1½ 548 (600-1½)	NA

KEOKUK, IOWA

Amdt 1A 21MAR24

40°28'N-91°26'W

KEOKUK MUNI (EOK)

RNAV (GPS) RWY 26

NC-3, 07 AUG 2025 to 04 SEP 2025

NC-3, 07 AUG 2025 to 04 SEP 2025