

KEOKUK, IOWA

AL-970 (FAA)

23138

LOC/DME I-BBJ 110.9 Chan 46	APP CRS 264°	Rwy Idg 5500 TDZE 671 Apt Elev 672
-------------------------------------------------	------------------------	---------------------------------------------------------------

ILS or LOC RWY 26
KEOKUK MUNI (EOK)

DME required for LOC only.

NA

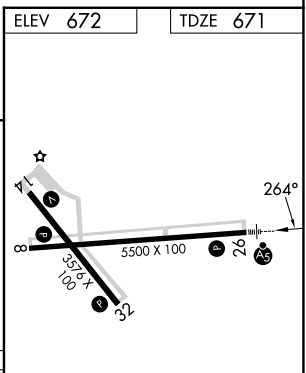
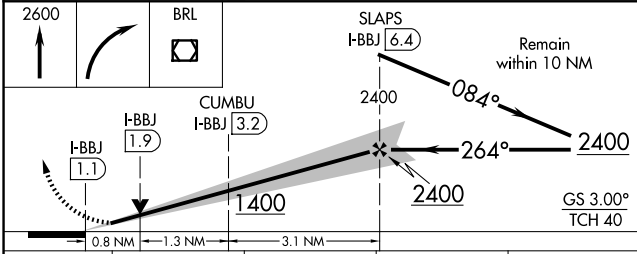
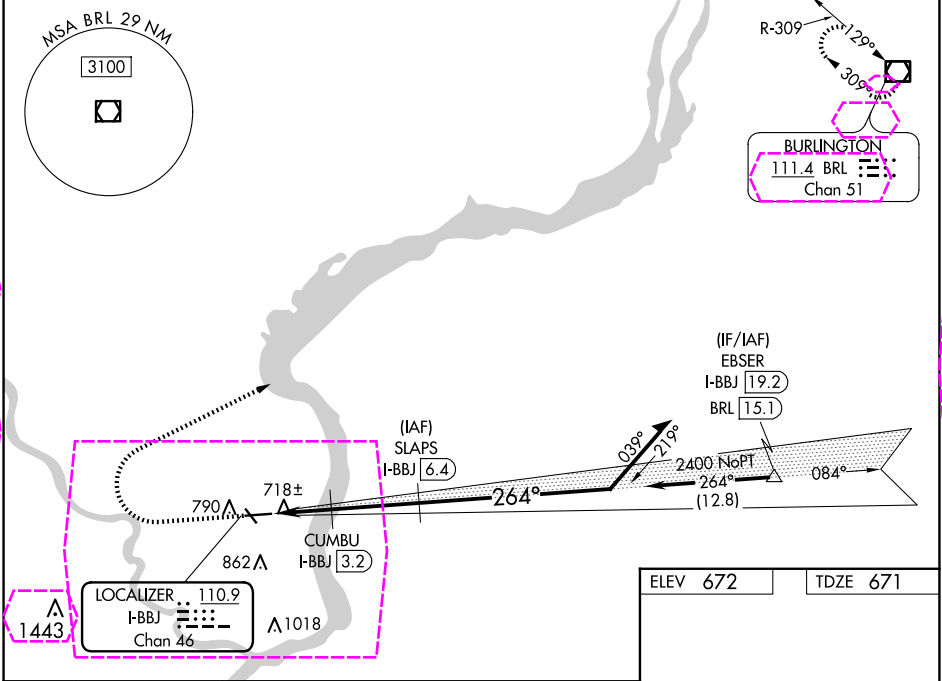
Circling Rwy 32 NA at night. Inop table does not apply to S-ILS 26. VDP NA when using Burlington altimeter setting. When local altimeter setting not received, use Burlington altimeter setting and increase S-ILS 26 DA to 927 feet, increase all MDAs 60 feet and Circling visibility Cat C ¼ SM. For inop ALS, increase S-LOC 26 Cats A and B visibility to 1 SM, and Cat C to ¾ SM. For inop ALS when using Burlington altimeter setting, increase S-LOC 26 all Cats visibility to 1 SM.

MALSR

MISSED APPROACH:

Climb to 2600 then right turn direct BRL VOR/DME and hold.

AWOS-3 118.375	KANSAS CITY CENTER 126.225 317.775	UNICOM 122.8 (CTAF) 0
--------------------------	----------------------------------------------	---------------------------------



CATEGORY	A	B	C	D
S-ILS 26	871-¾ 200 (200-¾)			NA
S-LOC 26	980-¾ 309 (400-¾)			NA
CIRCLING	1180-1 508 (600-1)	1220-1 548 (600-1)	1220-1½ 548 (600-1½)	NA

REIL Rwy 8, 14, and 32 0
MIRL Rwy 8-26 and 14-32 0

KEOKUK, IOWA

Amtd 1 20APR23

40°28'N-91°26'W

KEOKUK MUNI (EOK)
ILS or LOC RWY 26

NC-3, 10 JUL 2025 to 07 AUG 2025

NC-3, 10 JUL 2025 to 07 AUG 2025

KEOKUK, IOWA

AL-970 (FAA)

25219

LOC/DME I-BBJ 110.9 Chan 46	APP CRS 264°	Rwy Ldg TDZE 671 Apt Elev 672
-------------------------------------------------	------------------------	---------------------------------------------------

ILS or LOC RWY 26
KEOKUK MUNI (EOK)

DME required for LOC only.

NA

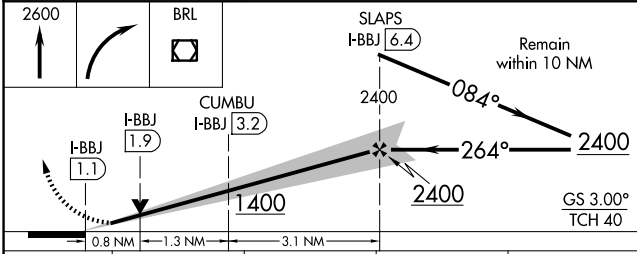
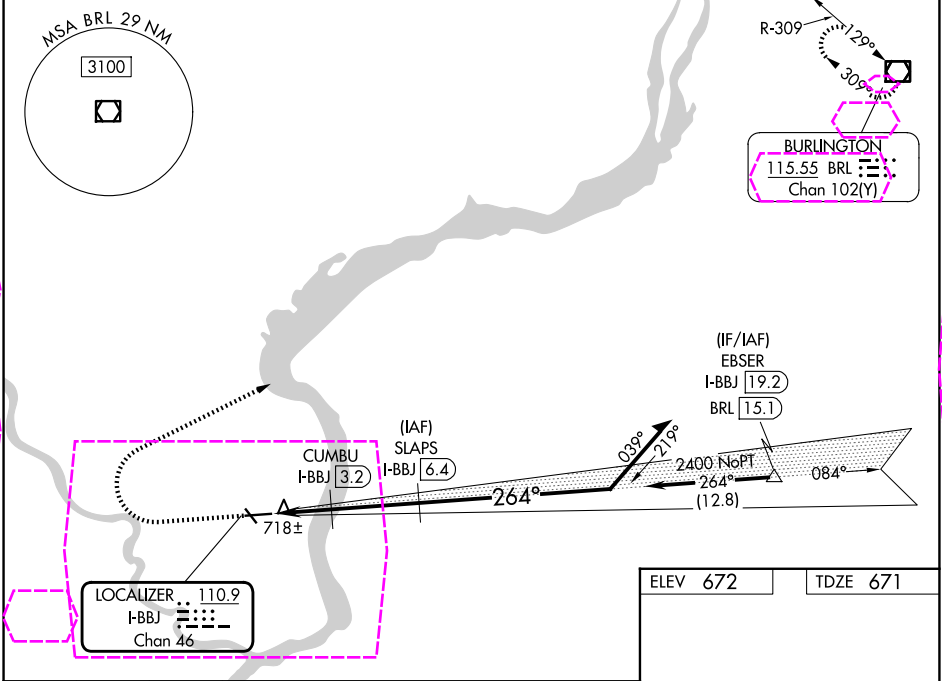
Circling Rwy 32 NA at night. Inop table does not apply to S-ILS 26. VDP NA when using Burlington altimeter setting. When local altimeter setting not received, use Burlington altimeter setting and increase S-ILS 26 DA to 927 feet, increase all MDAs 60 feet and Circling visibility Cat C ¼ SM. For inop ALS, increase S-LOC 26 Cats A and B visibility to 1 SM, and Cat C to ¾ SM. For inop ALS when using Burlington altimeter setting, increase S-LOC 26 all Cats visibility to 1 SM.

MALSR

MISSED APPROACH:

Climb to 2600 then right turn direct BRL VOR/DME and hold.

AWOS-3 118.375	KANSAS CITY CENTER 126.225 317.775	UNICOM 122.8 (CTAF) 0
--------------------------	----------------------------------------------	---------------------------------



CATEGORY	A	B	C	D
S-ILS 26	871-¾ 200 (200-¾)			NA
S-LOC 26	980-¾ 309 (400-¾)			NA
CIRCLING	1180-1 508 (600-1)	1220-1 548 (600-1)	1220-1½ 548 (600-1½)	NA

ELEV 672 TDZE 671

REIL Rwy 8, 14, and 32 0
MIRL Rwy 8-26 and 14-32 0

KEOKUK, IOWA

Amtd 1 20APR23

40°28'N-91°26'W

KEOKUK MUNI (EOK)
ILS or LOC RWY 26

NC-3, 07 AUG 2025 to 04 SEP 2025

NC-3, 07 AUG 2025 to 04 SEP 2025