



RUTLAND/SOUTHERN VERMONT RGNL (RUT)

WAAS CH 93730 W19B	APP CRS 194°	Rwy Idg TDZE Apt Elev	5004 787 787
--	------------------------	-----------------------------	---

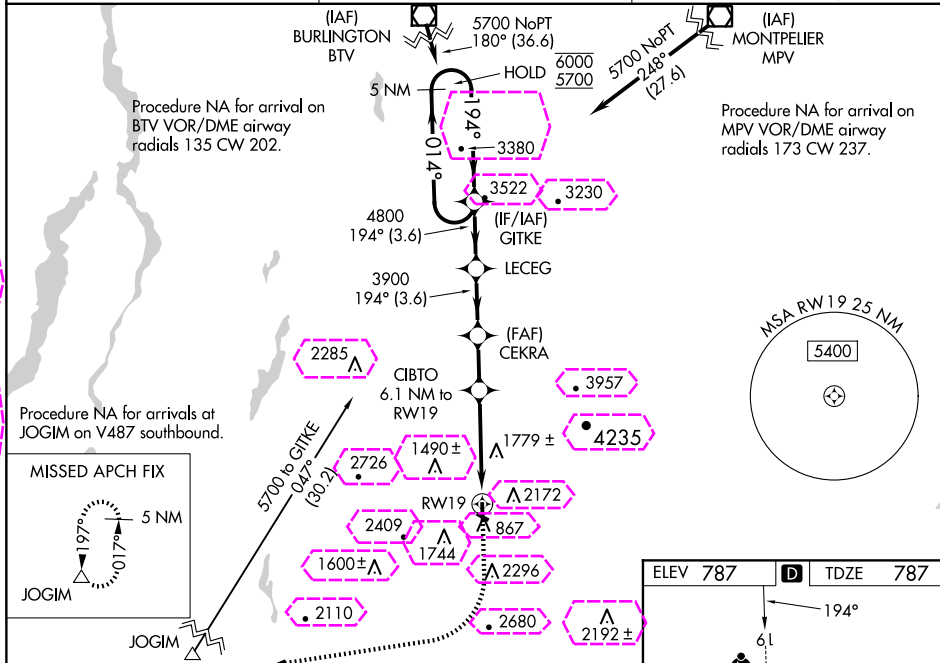
RNP APCH - GPS.



 Circling NA northeast of Rwy 19 and 31. Circling Rwy 13, 31 NA at night. Inop table does not apply to LNAV/VNAV all Cats, Baro-VNAV NA. For inop ALS, increase LPV all Cats visibility to 1/2 miles. VDP NA when using VSF altimeter setting. For inop ALS while using VSF altimeter setting, increase LPV all Cats visibility to 1/2 miles. Inop table does not apply when using VSF altimeter setting to LNAV/VNAV all Cats and LNAV Cat C. When local altimeter setting not received, use VSF altimeter setting and increase LPV DA to 1281 feet and all visibilities 1/2 SM; increase LNAV/VNAV DA to 2230 feet; increase all MDAs 80 feet and LNAV visibility Cat C 1/2 SM.

MALSR

MISSED APPROACH: Climb to 1500 then climbing right turn to 5700 direct JOGIM and hold, continue climb-in-hold to 5700. Missed approach requires minimum climb of 420 feet per NM to 3200; if unable to meet climb gradient, see RNAV (GPS) Y Rwy 19.

AWOS-3PT 118.375	BOSTON CENTER 135.7 282.2	UNICOM 122.8 (CTAF) 0
----------------------------	-------------------------------------	--



5 NM Holding Pattern

GITKE

LECEG

CEKRA

CIBTO

RW19

6.1 NM to RW19

3 NM to RW19

JOGIM

6000 ← 014°

5700 → 194°

4800

3900

2900


GP 3.20°

TCH 54

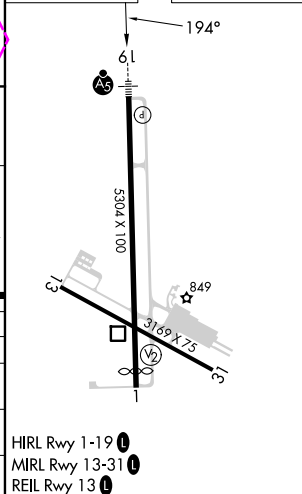
1500

5700

△

CATEGORY		A	B	C	D
LPV	DA †	1201-3 ³ / ₄	414 (500-3 ³ / ₄)		NA
LNAV/ VNAV	DA	2150-5	1363 (1400-5)		NA
LNAV	MDA †	1820-3 ³ / ₄ 1033 (1100-3 ³ / ₄)	1820-1 1033 (1100-1)	1820-2½ 1033 (1100-2½)	NA
		2560-1½ 1273 (1800-1½)	2560-1½ 1273 (1800-1½)	2560-3 1273 (1800-3)	NA

ELEV 787	D	TDZE 787
----------	----------	----------



Amdt 1A 17APR25

RUTLAND/SOUTHERN VERMONT RGNL (RUT)

43°32'N-72°57'W

RNAV (GPS) Z RWY 19

RUTLAND, VERMONT

AL-968 (FAA)

25219

WAAS CH 93730 W19B	APP CRS 194°	Rwy Ldg TDZE 787 Apt Elev 787
--	------------------------	---

RNAV (GPS) Z RWY 19

RUTLAND/SOUTHERN VERMONT RGNL (RUT)

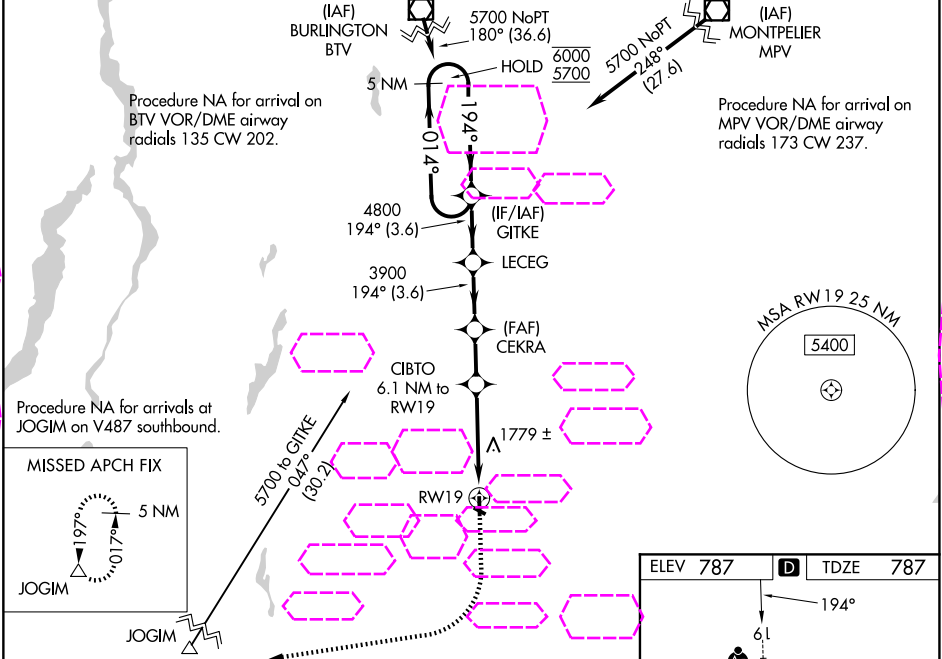
RNP APCH - GPS.

⚠ Circling NA northeast of Rwy 19 and 31. Circling Rwy 13, 31 NA at night. Inop table does not apply to LNAV/VNAV all Cats. Baro-VNAV NA. For inop ALS, increase LPV all Cats visibility to 1½ miles. VDP NA when using VSF altimeter setting. For inop ALS while using VSF altimeter setting, increase LPV all Cats visibility to 1½ miles. Inop table does not apply when using VSF altimeter setting to LNAV/VNAV all Cats and LNAV Cat C. When local altimeter setting not received, use VSF altimeter setting and increase LPV DA to 1281 feet and all visibilities ½ SM; increase LNAV/VNAV DA to 2230 feet; increase all MDAs 80 feet and LNAV visibility Cat C ½ SM.

MALSR

MISSED APPROACH: Climb to 1500 then climbing right turn to 5700 direct JOGIM and hold, continue climb-in-hold to 5700. Missed approach requires minimum climb of 420 feet per NM to 3200; if unable to meet climb gradient, see RNAV (GPS) Y Rwy 19.

AWOS-3PT 118.375	BOSTON CENTER 135.7 282.2	UNICOM 122.8 (CTAF)
----------------------------	-------------------------------------	-------------------------------



5 NM Holding Pattern		GITKE		LECEG		CEKRA		CIBTO		RWY 19	
6000		5700		4800		3900		2900		1500	
GP 3.20°		TCH 54		3.6 NM		3.6 NM		2.9 NM		3.1 NM	
CATEGORY		A		B		C		D			
LPV DA †		1201-¾		414 (500-¾)				NA			
LNAV/VNAV DA		2150-5		1363 (1400-5)				NA			
LNAV MDA †		1820-¾		1820-1		1820-2 ½		NA			
		1033 (1100-¾)		1033 (1100-1)		1033 (1100-2 ½)					
CIRCLING		2560-1 ¼		2560-1 ½		2560-3		NA			
		1773 (1800-1 ¼)		1773 (1800-1 ½)		1773 (1800-3)					

ELEV 787 D TDZE 787

194°

6.1

5700

5304 X 100

849

3159 X 75

HIRL Rwy 1-19

MIRL Rwy 13-31

REIL Rwy 13