

RUTLAND, VERMONT

AL-968 (FAA)

25107

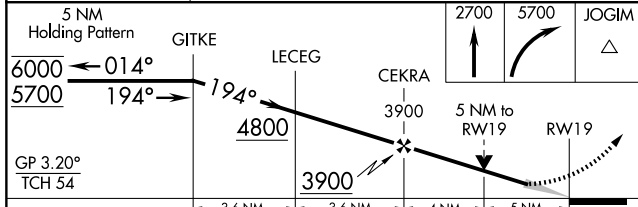
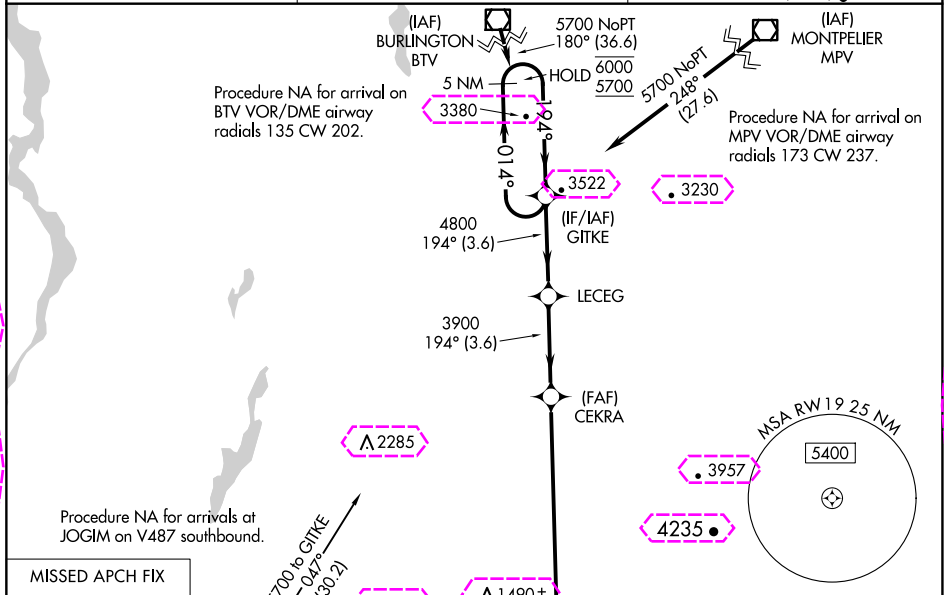
WAAS CH 65830 W19A	APP CRS 194°	Rwy Idg TDZE 787 Apt Elev 787	5004
--	------------------------	---	-------------

RNAV (GPS) Y RWY 19

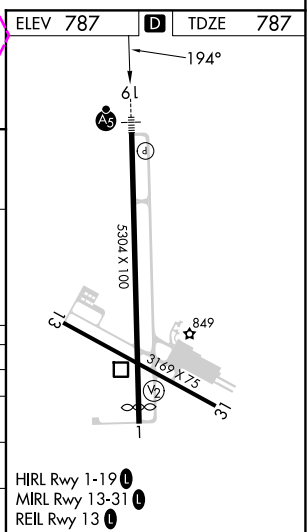
RUTLAND/SOUTHERN VERMONT RGNL (RUT)

RNP APCH - GPS. -8°C	MALSR 	MISSED APPROACH: Climb to 2700, then climbing right turn to 5700 direct JOGIM and hold, continue climb-in-hold to 5700.
------------------------------------	-----------	---

AWOS-3PT 118.375	BOSTON CENTER 135.7 282.2	UNICOM 122.8 (CTAF) 0
----------------------------	-------------------------------------	---------------------------------



CATEGORY	A	B	C	D
LPV DA	2270-5	1483 (1500-5)		NA
LNAV/VNAV DA	2223-5	1436 (1500-5)		NA
LNAV MDA	2560-1¼ 1773 (1800-1¼)	2560-1½ 1773 (1800-1½)	2560-3 1773 (1800-3)	NA
CIRCLING	2560-1¼ 1773 (1800-1¼)	2560-1½ 1773 (1800-1½)	2560-3 1773 (1800-3)	NA



RUTLAND, VERMONT
Amdt 3A 17APR25

RUTLAND/SOUTHERN VERMONT RGNL (RUT)
43°32'N-72°57'W
RNAV (GPS) Y RWY 19

RUTLAND, VERMONT

AL-968 (FAA)

25219

WAAS CH 65830 W19A	APP CRS 194°	Rwy Ldg TDZE 787 Apt Elev 787
--	------------------------	---

RNAV (GPS) Y RWY 19

RUTLAND/SOUTHERN VERMONT RGNL (RUT)

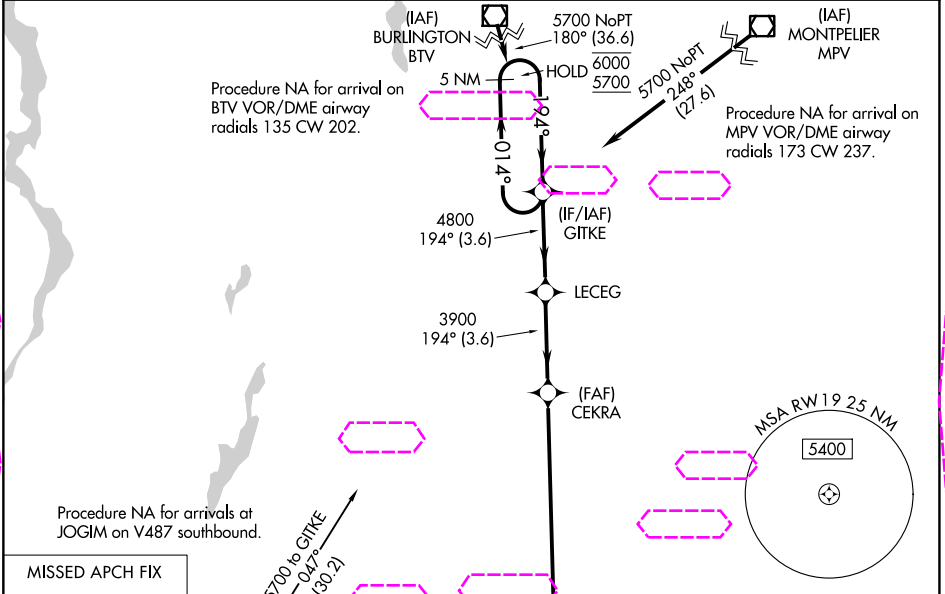
RNP APCH - GPS.

Circling NA northeast of Rwy 19 and 31. Circling Rwy 13, 31 NA at night. Inop table does not apply to LPV, LNAV/VNAV, LNAV all Cnts. Inop table does not apply when using VSF altimeter setting to LPV, LNAV/VNAV, LNAV all Cnts. Baro-VNAV NA. VDP NA when using VSF altimeter setting. When local altimeter setting not received, use VSF altimeter setting and increase LPV DA to 2350 feet and all visibilities 1 SM; increase LNAV/VNAV DA to 2303 feet; increase all MDAs 80 feet.

MALSR

MISSED APPROACH: Climb to 2700, then climbing right turn to 5700 direct JOGIM and hold, continue climb-in-hold to 5700.

AWOS-3PT 118.375	BOSTON CENTER 135.7 282.2	UNICOM 122.8 (CTAF) 0
----------------------------	-------------------------------------	---------------------------------



MISSED APCH FIX				
JOGIM				
5 NM Holding Pattern				
GP 3.20° TCH 54				
CATEGORY	A	B	C	D
LPV DA	2270-5	1483 (1500-5)		NA
LNAV/VNAV DA	2223-5	1436 (1500-5)		NA
LNAV MDA	2560-1¼ 1773 (1800-1¼)	2560-1½ 1773 (1800-1½)	2560-3 1773 (1800-3)	NA
CIRCLING	2560-1¼ 1773 (1800-1¼)	2560-1½ 1773 (1800-1½)	2560-3 1773 (1800-3)	NA

