

RUTLAND, VERMONT

AL-968 (FAA)

25051

WAAS CH 50141 W01A	APP CRS 029°	Rwy Idg TDZE Apt Elev	5004 787 787
--	------------------------	-----------------------------	---

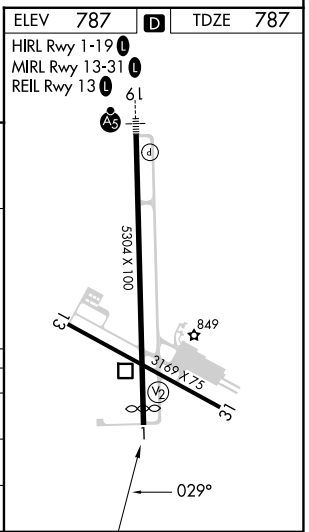
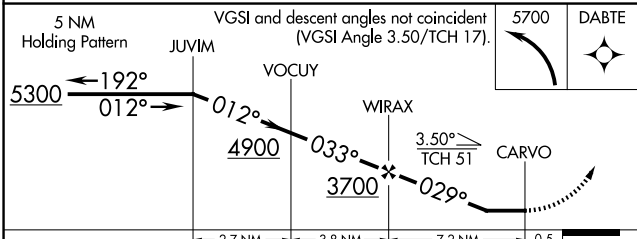
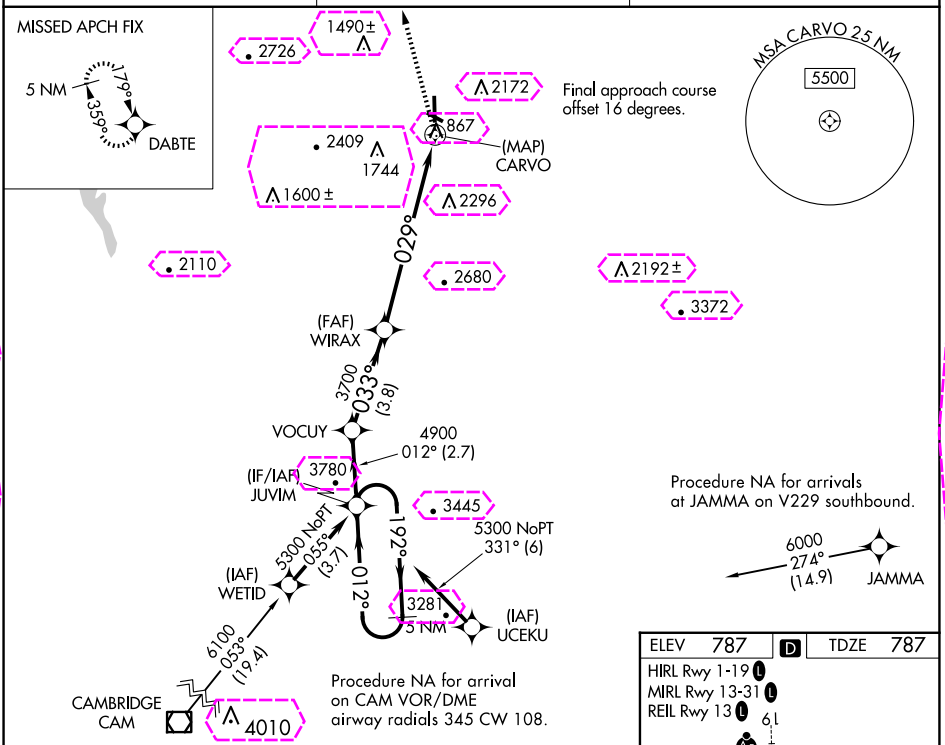
RNAV (GPS) RWY 1

RUTLAND/SOUTHERN VERMONT RGNL (RUT)

⚠ **A** DME/DME RNP-0.3 NA. Procedure NA at night. When local altimeter setting not received, use Springfield altimeter setting and increase all MDA 500 feet. Rwy 1 helicopter visibility reduction below 1 SM NA. Circling NA E of Rwys 19 and 31.

MISSED APPROACH: Climbing left turn 5700 direct DABTE and hold.

AWOS-3PT 118.375	BOSTON CENTER 135.7 282.2	UNICOM 122.8 (CTAF)
----------------------------	-------------------------------------	-------------------------------



CATEGORY	A	B	C	D
LP MDA	2420-1¼ 1633 (1700-1¼)	2420-1½ 1633 (1700-1½)	2420-3	1633 (1700-3)
LNAV MDA	3100-1¼ 2313 (2400-1¼)	3100-1½ 2313 (2400-1½)	3100-3	2313 (2400-3)
CIRCLING	3100-1¼ 2313 (2400-1¼)	3100-1½ 2313 (2400-1½)	3100-3	2313 (2400-3)

RUTLAND, VERMONT
Amdt 1 02FEB17

RUTLAND/SOUTHERN VERMONT RGNL (RUT)
43°32'N-72°57'W
RNAV (GPS) RWY 1

NE-1, 10 JUL 2025 to 07 AUG 2025

NE-1, 10 JUL 2025 to 07 AUG 2025

RUTLAND, VERMONT

AL-968 (FAA)

25219

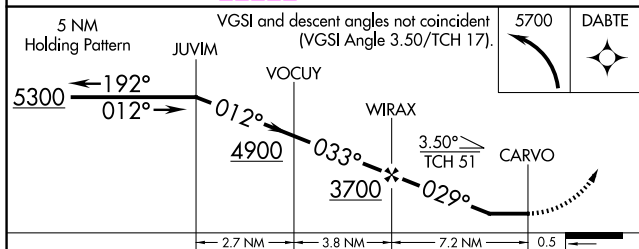
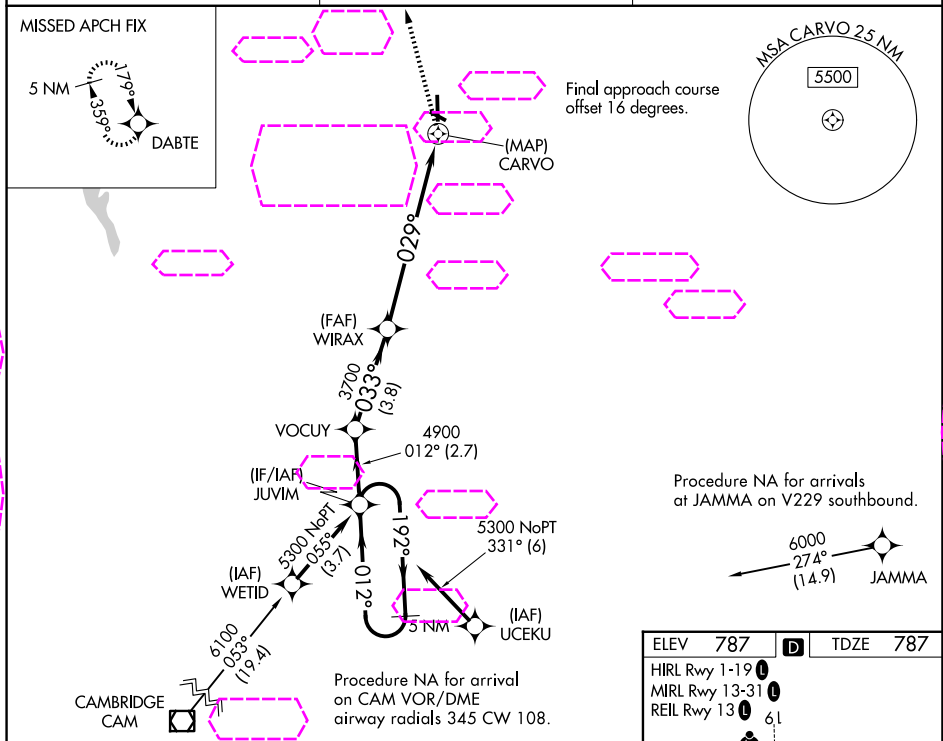
WAAS CH 50141 W01A	APP CRS 029°	Rwy Ldg TDZE Apt Elev 5004 787 787
--	------------------------	--

RNAV (GPS) RWY 1

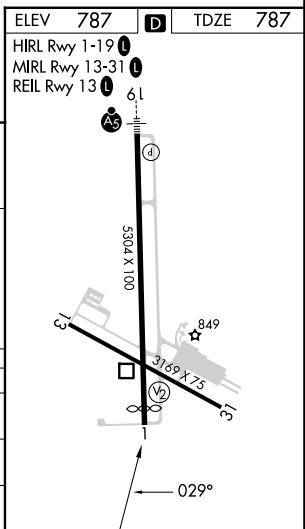
RUTLAND/SOUTHERN VERMONT RGNL (RUT)

 -7°C	DME/DME RNP-0.3 NA. Procedure NA at night. When local altimeter setting not received, use Springfield altimeter setting and increase all MDA 500 feet. Rwy 1 helicopter visibility reduction below 1 SM NA. Circling NA E of Rwys 19 and 31.	MISSED APPROACH: Climbing left turn 5700 direct DABTE and hold.
----------	--	---

AWOS-3PT 118.375	BOSTON CENTER 135.7 282.2	UNICOM 122.8 (CTAF)
----------------------------	-------------------------------------	-------------------------------



CATEGORY	A	B	C	D
LP MDA	2420-1¼ 1633 (1700-1¼)	2420-1½ 1633 (1700-1½)	2420-3	1633 (1700-3)
LNAV MDA	3100-1¼ 2313 (2400-1¼)	3100-1½ 2313 (2400-1½)	3100-3	2313 (2400-3)
CIRCLING	3100-1¼ 2313 (2400-1¼)	3100-1½ 2313 (2400-1½)	3100-3	2313 (2400-3)



RUTLAND, VERMONT

Amdt 1 02FEB17

RUTLAND/SOUTHERN VERMONT RGNL (RUT)

43°32'N-72°57'W

RNAV (GPS) RWY 1

NE-1, 07 AUG 2025 to 04 SEP 2025

NE-1, 07 AUG 2025 to 04 SEP 2025