

RUTLAND, VERMONT

AL-968 (FAA)

25051

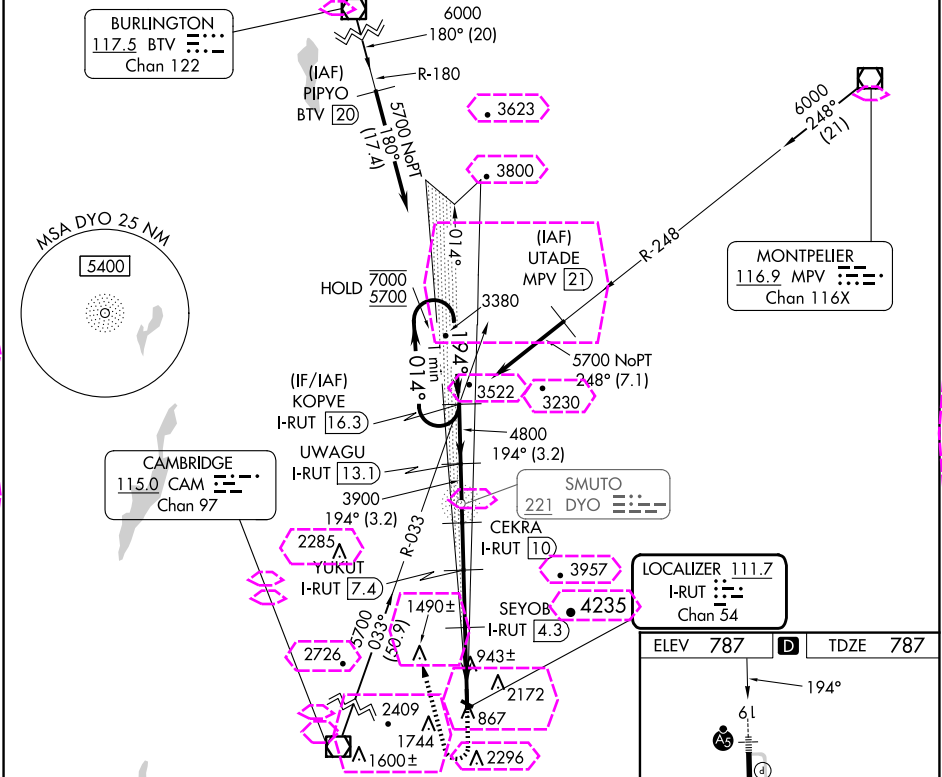
LOC/DME I-RUT	APP CRS	Rwy Idg
111.7	194°	5004
Chan 54		TDZE 787
		Apt Elev 787

ILS Z or LOC Z RWY 19

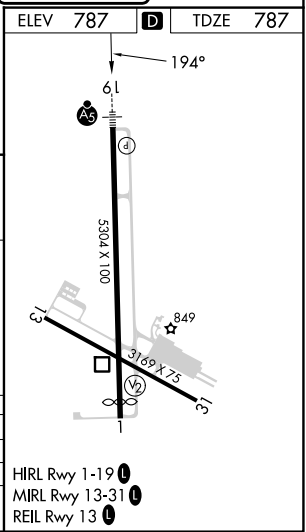
RUTLAND/SOUTHERN VERMONT RGNL (RUT)

DME required.	MALSR	MISSED APPROACH: Climb to 1900 then climbing right turn to 5700 on heading 360° and CAM VOR/DME R-033 to KOPVE/I-RUT 16.31 DME and hold. If unable to meet climb gradient, see ILS Y or LOC Y Rwy 19. # Missed approach requires minimum climb of 425 feet per NM to 3200.
<p>▼ Circling to Rwy 13, 31 NA at night. Circling NA northeast of Rwy 19 and 31. For inop ALS, increase S-ILS 19 visibility all Cats to 1½ SM, and increase S-LOC 19 Cat C/D visibility to 2 SM.</p> <p>⚠ -8°C</p>	<p>AS</p>	

AWOS-3PT	BOSTON CENTER	UNICOM
118.375	135.7 282.2	122.8 (CTAF) 0



One Minute Holding Pattern		1900	5700	CAM R-033	KOPVE I-RUT 16.3
KOPVE I-RUT 16.3		↑	hdg 360°		
7000	014°	194°	194°		*LOC only
5700					
GS 3.20°					
TCH 54					
	3.2 NM	3.2 NM	2.5 NM	3.1 NM	1.4 NM
					2 NM
CATEGORY	A	B	C	D	
S-ILS 19 #	1451-1½ 664 (700-1½)				
S-LOC 19 #	1520-1½ 733 (800-1½)	1520-1½ 733 (800-1½)	1520-1½ 733 (800-1½)	1520-1½ 733 (800-1½)	1520-1½ 733 (800-1½)
CIRCLING	2160-1½ 1373 (1400-1½)	2160-1½ 1373 (1400-1½)	2520-3 1733 (1800-3)	2760-3 1973 (2000-3)	



RUTLAND, VERMONT
Amdt 1B 16JUN22

43°32'N-72°57'W

RUTLAND/SOUTHERN VERMONT RGNL (RUT)

ILS Z or LOC Z RWY 19

NE-1, 10 JUL 2025 to 07 AUG 2025

NE-1, 10 JUL 2025 to 07 AUG 2025

RUTLAND, VERMONT

AL-968 (FAA)

25219

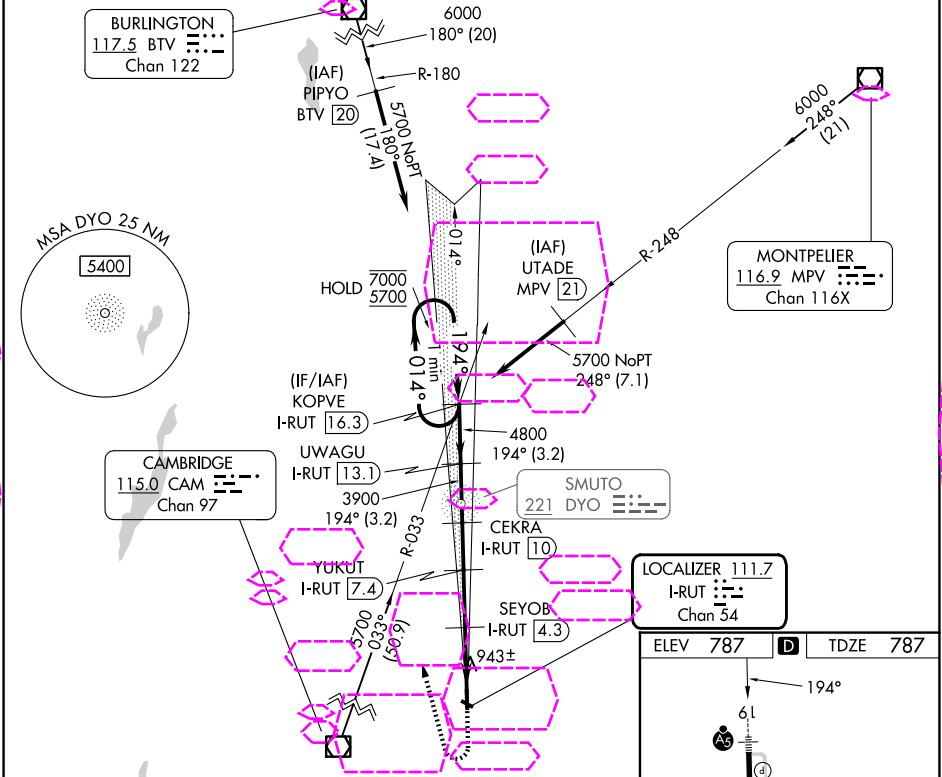
LOC/DME I-RUT	APP CRS	Rwy Ldg
111.7	194°	5004
Chan 54		TDZE 787
		Apt Elev 787

ILS Z or LOC Z RWY 19

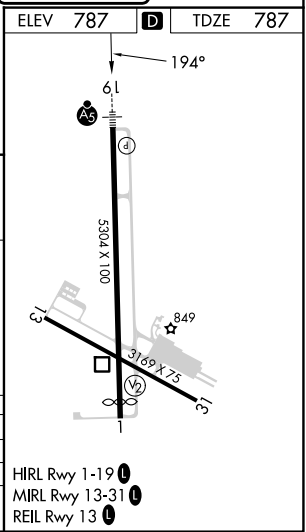
RUTLAND/SOUTHERN VERMONT RGNL (RUT)

DME required.	MALSR	MISSED APPROACH: Climb to 1900 then climbing right turn to 5700 on heading 360° and CAM VOR/DME R-033 to KOPVE/I-RUT 16.31 DME and hold. If unable to meet climb gradient, see ILS Y or LOC Y Rwy 19. # Missed approach requires minimum climb of 425 feet per NM to 3200.
<p>▼ Circling to Rwy 13, 31 NA at night. Circling NA northeast of Rwy 19 and 31. For inop ALS, increase S-ILS 19 visibility all Cats to 1½ SM, and increase S-LOC 19 Cat C/D visibility to 2 SM.</p>	<p>AS</p>	

AWOS-3PT 118.375	BOSTON CENTER 135.7 282.2	UNICOM 122.8 (CTAF) 0
---------------------	------------------------------	--------------------------



One Minute Holding Pattern		1900	5700	CAM R-033	KOPVE I-RUT 16.3
KOPVE I-RUT 16.3		↑	hdg 360°		
7000	014°	194°	194°		*LOC only
5700					
GS 3.20° TCH 54		3900	*3040	*1980	
		3.2 NM	3.2 NM	2.5 NM	3.1 NM
CATEGORY	A	B	C	D	
S-ILS 19 #	1451-1½ 664 (700-1½)				
S-LOC 19 #	1520-1½	733 (800-1½)	1520-1½	733 (800-1½)	
CIRCLING	2160-1½	2160-1½	2520-3	2760-3	
	1373 (1400-1½)	1373 (1400-1½)	1733 (1800-3)	1973 (2000-3)	



RUTLAND, VERMONT
Amdt 1B 16JUN22

43°32'N-72°57'W

RUTLAND/SOUTHERN VERMONT RGNL (RUT)

ILS Z or LOC Z RWY 19

NE-1, 07 AUG 2025 to 04 SEP 2025

NE-1, 07 AUG 2025 to 04 SEP 2025